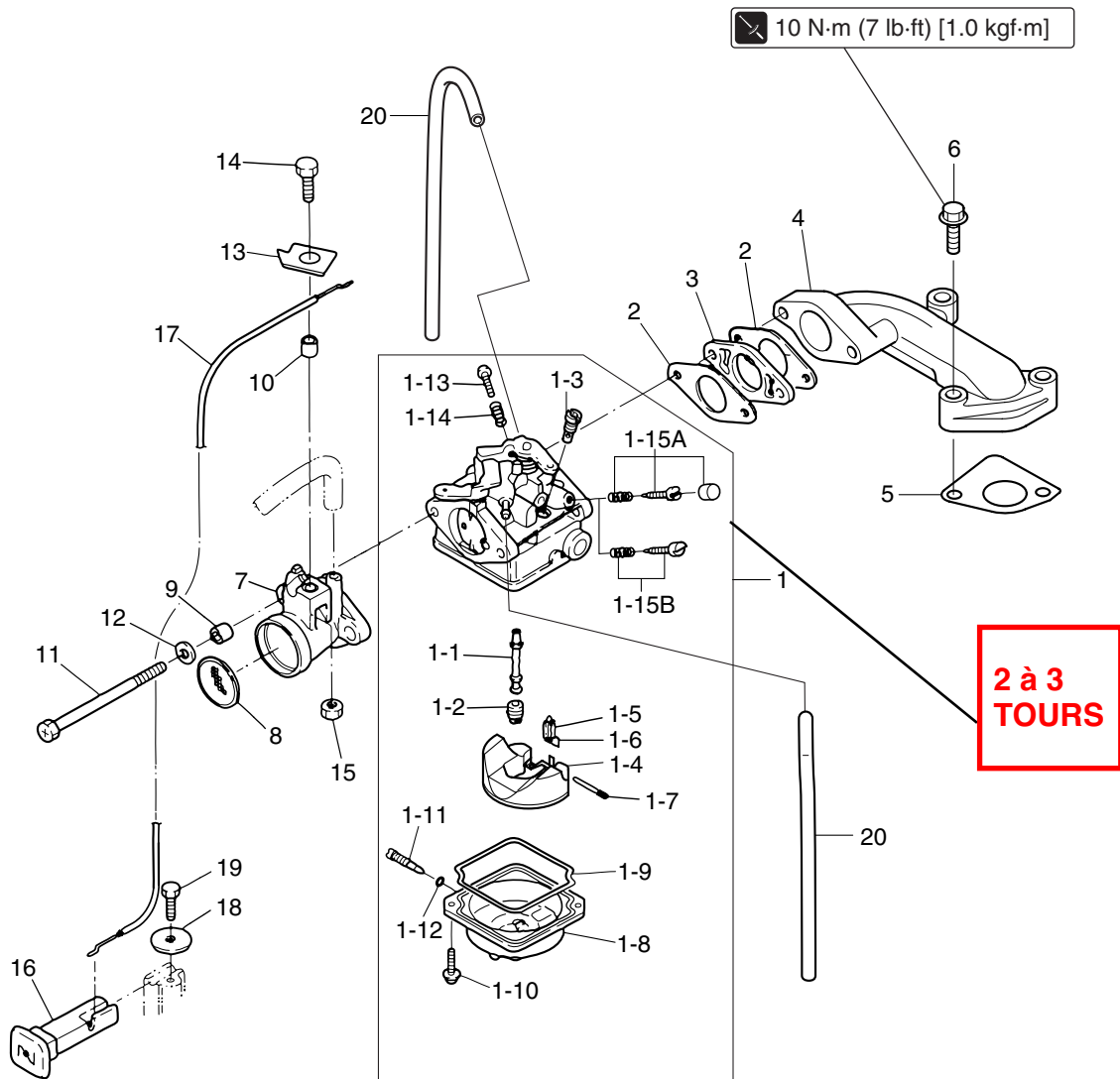




# Fuel System (Carburetor)

Carburetor

Fig. 3



Ref. No.	Description	Qty	Remarks
1	Carburetor	1	
1-1	Main Nozzle	1	
1-2	Main Jet	1	
1-3	Slow Jet	1	
1-4	Float	1	
1-5	Float Valve	1	
1-6	Clip	1	
1-7	Float Arm Pin	1	
1-8	Float Chamber	1	
1-9	Float Chamber O-Ring	1	<b>Do not reuse.</b>
1-10	Screw	2	
1-11	Drain Screw	1	
1-12	Drain Screw O-Ring	1	<b>Do not reuse.</b>
1-13	Stop Screw	1	
1-14	Stop Screw Spring	1	
1-15A	Pilot Screw Set	1	
1-15B	Pilot Screw Set (for EU)	(1)	for EUROPE
2	Carburetor Gasket	2	<b>Do not reuse.</b>
3	Insulator	1	
4	Intake Manifold	1	
5	Intake Manifold Gasket	1	<b>Do not reuse.</b>
6	Bolt	2	M6 L=30mm
7	Intake Silencer	1	
8	Flame Arrester	1	

Ref. No.	Description	Qty	Remarks
9	Collar, 6.2-9-7.5	2	
10	Collar, 6.2-9-7	1	
11	Bolt	2	M6 L=85mm
12	Washer	2	
13	Cable Holder	1	
14	Bolt	1	M6 L=16mm
15	Nut	1	M6
16	Choke Rod	1	
17	Choke Link Cable	1	
18	Washer, 6.5-21-1	1	
19	Bolt	1	M6 L=12mm
20	Rubber Hose	2	