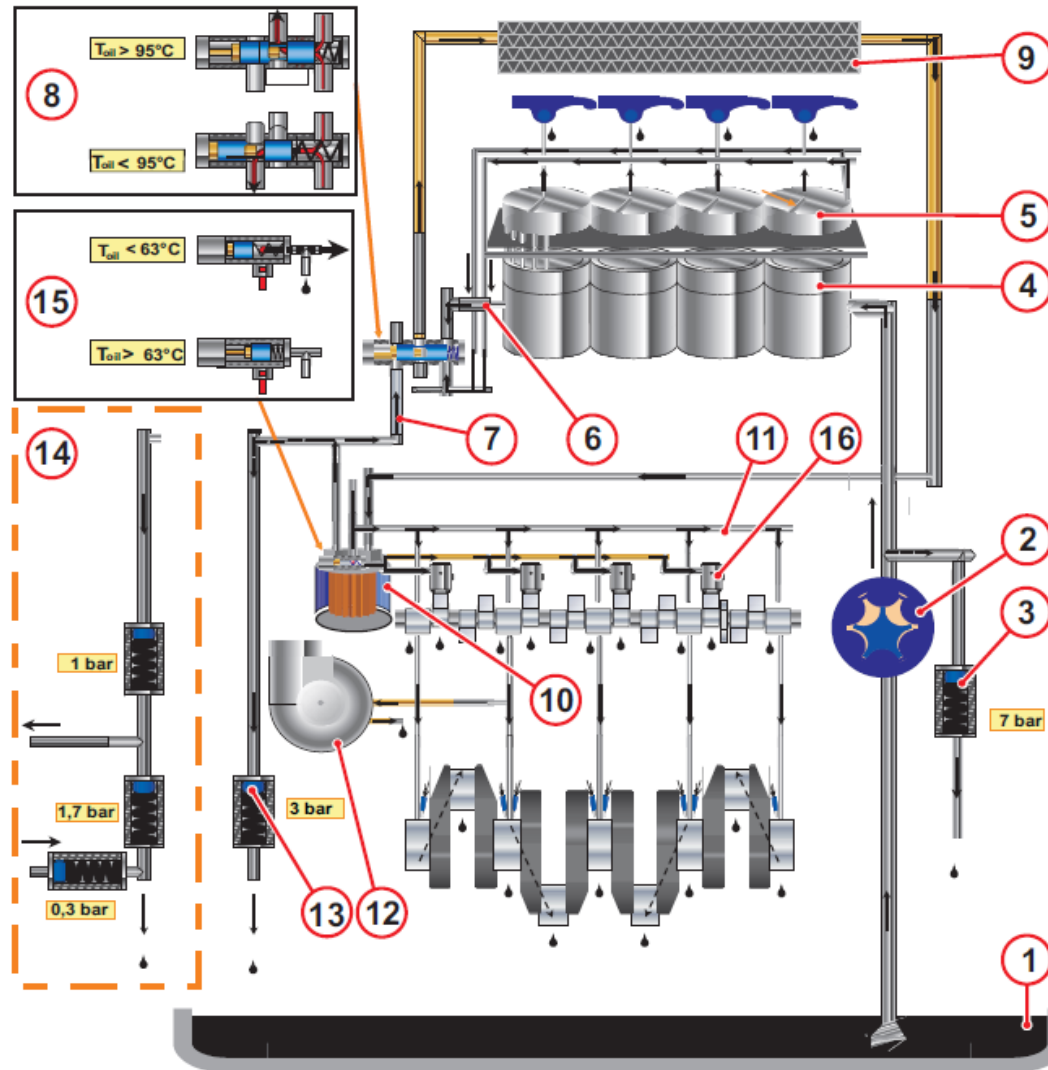


Cooling System - Schematic Oil Cooled

Schematic for lubricating oil



Engine description

FL/FM 2011

(example)

- 1 Lubricating oil sump
- 2 Lubricating oil pump
- 3 Pressure limiting valve
- 4 Cylinder (lubricating oil-cooled)
The lubricating oil is used first to cool the engine.
- 5 Cylinder head
- 6 Lubricating oil return from the cylinders
- 7 Lubricating oil collection pipe to the thermostat
- 8 Thermostat
(engine cold) lubricating oil flow directly to the lubricating oil filter
(engine warm) lubricating oil flow through the lubricating oil cooler
- 9 Lube oil cooler
- 10 Lubricating oil filter
- 11 Main lube oil channel
- 12 Turbocharger
- 13 Pressure holding valve
- 14 Connection possibility for cab heating
The standard pressure holding valve must be replaced by a combination for this. Retrofitting only by authorised qualified personnel.
- 15 Lubricating oil filter console with integrated switching valve for controlling the hydraulic tappet.
When the engine is cold, lubricating oil is fed to the hydraulic tappet.
To achieve early adjustment of the fuel injection in a cold start, the hydraulic tappets under the fuel injectors are supplied with lubricating oil.
- 16 Hydraulic tappets