



Unified Charts

ALL....UK,IRL,BE,NL,FR (Atlantic & Channel),ES,PT--
2017 edition

Instructions: (Windows virtual DVD method):

Step 1: If running Windows 7 or lower, install the WinCDEmu-4.0.exe by double clicking. This will allow you to mount the .iso image as a virtual drive. Windows 8 onwards has native support for mounting .iso as a virtual drive. But we still recommend getting WinCDEmu, as it allows easier control of drive letters.

Download WinCDEmu-4.1 (1.62 Mb) [Download from us](#)

Download direct from maker [Download from makers](#)



Instructions

Download and install the WinCDEmu-4.0.exe by double clicking. This only needs doing once. This will allow you to mount the .iso image as a virtual drive. FREE

Step 2: Next download the Unified Chart virtual DVD product you have just paid for. This is a BIG download, About 3.25 Gb, so make sure you have a good broadband connection.

<http://media.visitmyharbour.com/Unified-2017/ALL.iso>

When the .iso arrives, put it on your desktop. Make backup copies and stash safely. The SAME .iso image can be used on your backup machine, after activation. No need to download it more than once, make copies.

With the .iso image on your desktop, try double clicking it..or right clicking it. The aim is to “mount” the .iso as if it was a real DVD in a drive. You need to be online for this bit:

Make sure you have your activation code printed out in large type on paper, and in front of you. You will see why shortly.

First use on a machine: The first time you try and mount the drive, it will try and “phone home” for activation. **You must be ONLINE for this bit.** You will need to enter the code we send you by email very carefully. It will look a bit like THIS sample: 0-CSC-3N75P2 **Once a code is used it will never work again.** Note differences between 0 zero and O capital o and 1 one and I capital i . **Subsequent uses will not require the unlock code.**

You will have received TWO activation codes, One working installation with ONE backup installation in reserve in case you lose your working copy somehow. Cross out the one you have just used.

After "mounting" the .iso image, the “run me” unlocking utility should run, and you will get EULA, click I agree. Charts will be unlocked.

If the unlocking sequence doesn't run automatically you will have to find the mounted DVD image, open it and click on the “Run Me” utility to unlock it.

Step 3: *Point* your OpenCPN, Polar Navy or Expedition software at the virtual drive and use the charts. Normally when you shut down your machine, the virtual drive will dis-mount. At next use double click the .iso image to mount the drive and use. The “run me” unlocking utility should run, and you will get EULA, click I agree. Charts will be unlocked. IF the “Run Me” doesn't run automatically when you mount the drive, locate it on the virtual drive and double click it to run it. If it does not run, the charts will remain unusable.

SeaClear. There are a special set of charts on the DVD image, just for SeaClear, called “SeaClear_Image_Charts” OpenCPN and others can't read these, and SeaClear can't read the charts in the “CPN+Others_Charts” folder. With SeaClear, you will have to fire up MapCal and use:

Tools >>> Set Directories>>> then “navigate to” the “SeaClear_Image_Charts” folder on the virtual DVD.

Then use **Tools>>>>Autoload List >>>Recreate**. MapCal will index the charts, and SeaClear will be able to use them.

Tips:

The idea is to try and “mount” the virtual DVD using the same drive letter each time. With the WinCDEmu software, on Windows Vista and 7, it's very straightforward. Normally it will offer to mount as Drive V in the first instance. Just stick to that, and point your nav programs at Drive V or the folders within.

Confusion can occur when Windows 8 or 10 handles the mounting of the .iso image. These will normally allocate the next available drive letter to the virtual DVD. So it may be D..or may be E or F or other if you have some USBs plugged in....The best plan is probably to RIGHT CLICK the .iso on your desktop and get WinCDEmu to do the mounting...(as drive V maybe)

The other thing that needs to be understood is that when you close your machine, the virtual DVD will “Eject” (dis-mount). So you need to do the start up unlocking sequence each time you start your machine if you want to use the charts.

Power users will set up the WinCDEmu to re-mount the drive automatically at start up, with a short cut in place to the “Run Me” utility.

It's actually simple to use in reality, once you get used to the idea that you are using a virtual DVD, that needs inserting (Mount), and Ejecting.

“You will have received TWO activation codes, One working installation with ONE backup installation in reserve in case you lose your working copy somehow”

There is a fundamental difference between having “2 Windows activations” and the statement above. It means if you lose, break, de-activate or otherwise break your working installation...you will then need to use your BACKUP installation code.

We specifically do not recommend this product for those who keep having problems with their Windows machine, or who are likely to want to change / modify / upgrade / swap their machines. Use the USB version instead.

Bearing in mind that each activation code will only work ONCE and never again, (even on the same machine), here are a couple of tips to make sure you don't lose your charts by mistake.

1. Once the activation has been done and tested, set a system restore point and label it. Do not roll back your system past that restore point in future.
2. Do not change your OS by upgrading to W10...do that first if you have to... before activation of the Unified Charts.
3. Don't change your hard drive, format it, or re-install Windows

For the average user these things won't be an issue, just be aware that you could lose the

charts if you change anything about the target machine... and then you will have to use your backup. We will only keep the backup activation system running for a couple of years from the edition date of the product... so it's no good trying to use a second activation 5 years down the line.

Do not worry about accidentally losing your downloaded .iso image. Once the activation process is done ANY copy of THAT .iso image will work on the target machine. So you can make copies, you could even burn it to a DVD.. which will then work on your machine.

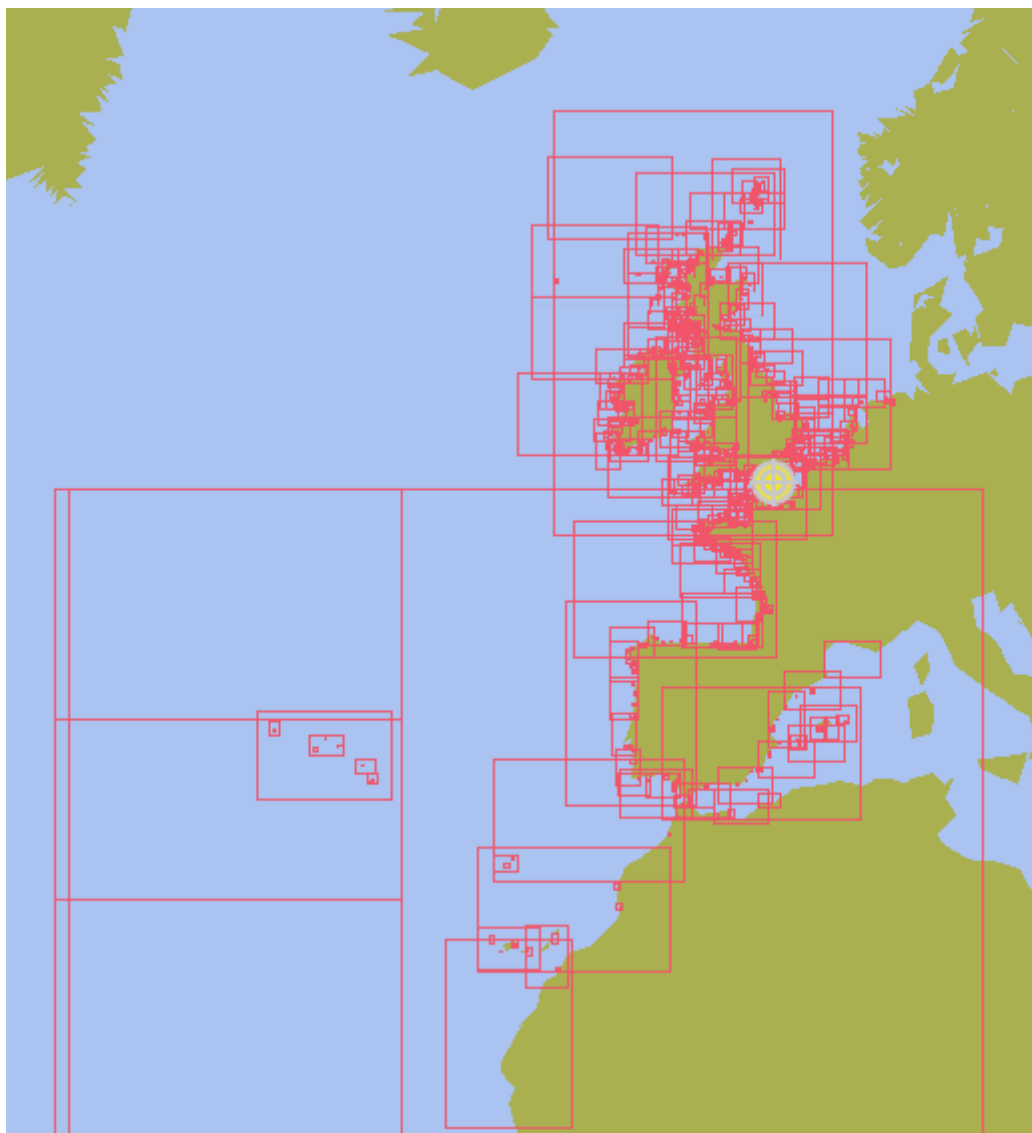
Conclusion Unified Charts, virtual DVD for Windows:

It's beyond the scope of this introduction PDF to really explain how to use the navigation programs that can be used with these charts. We don't make the nav programs. But they DO work with our charts... and if you're stuck, call 01983 293757 Mon-Fri 11-4 and we will try and help you get your chosen program working with the charts.

Instructions for loading charts into Marine Navigator on your Android device:

Full chartset, All UK & Ireland, Belgium, Netherlands, Spain, Portugal, and France, Channel and Atlantic

UK , ES,PT, BE,NL 17th Dec 2015, SHOM French charts Jan 2016/March 2016



Red outlines above represent charts, Over 1300 charts

NOTICE:

« Aucun service hydrographique officiel n'a vérifié les informations contenues dans ce document et ne peut être tenu responsable de la fidélité de leur reproduction ou de toute modification ultérieure. La possession de ce produit dérivé n'exonère pas de l'obligation d'utiliser les documents nautiques appropriés prévus par les règlements nationaux ou internationaux ».

"No official Hydrographic Office has verified the information contained in this document and can not be held responsible for the accuracy of reproduction or any subsequent amendment. Possession of the derivative does not exempt from the obligation use appropriate nautical documents required by national laws or International ".

« Ce produit intègre des données © SHOM – 1/2016 – reproduites avec l'autorisation n° 6/2015 »

"This product incorporates data © SHOM - Jan / 2016 - reproduced with authorization No. 6/2015 "

Step 1

End User License is appended to the instructions, please read carefully.

Download a PDF of the new *installation* instructions [HERE](#)

Read the EULA before installing charts.

Suggestion: Print this off and have to hand as installing.

"The End User License Agreement (**EULA**) is appended to the installation instructions make sure you read and understand this before purchase, **IN PARTICULAR** note you must do all installations within 12 months of ORIGINAL purchase"

"This is basically a "freebie" bundled with the Unified Charts, the EULA conditions apply the same as if you'd simply bought these with no Unified Charts"... Read above

Step 2

Download DIRECT to your Android device (email the PDF to Android if reqd.)

NOW download the All Charts (1.72 GB) ENCRYPTED chartset (Broadband connection needed) direct to your Android device

Tap

<http://media.visitmyharbour.com/000001-A-2017/17-ALL.zip>

Download time 15-30 mins on broadband. **These charts are no use in any other app or program, and remain encrypted and un-useable until activated by us.**

Follow the instructions in the PDF enclosed up to the point that Marine Navigator prepares an authorisation email asking for your PayPal receipt number.

Step 3

Final activation stage

Now use your shopping cart receipt with unique transaction ID (eg: RCxxxxxxxxxxx) from when you purchased the Unified Charts with bundled Android capability. Use this transaction ID in the authorisation email the app will generate instead of the PayPal unique transaction ID the email will ask for.

Now send the authorisation email from your Android device, after filling in the details required. You can add

into the body of the email an extra email address you'd like us to send the unlock token to if required (one you can collect on your PC if required).

Once you receive the reply from us, carry on with the instruction sheet, you're almost done !

Apart from the charts, you will need to purchase the **LATEST PAID VERSION** of "Marine Navigator" app, by Ronald Koenig directly from your Android device, available at the Google Play Store for about £6.50. Marine Navigator is not restricted to just using our licensed and encrypted charts, but can use any BSB2/3 charts you may already have. If you've been using an earlier version, go to PlayStore and update to the latest version for free