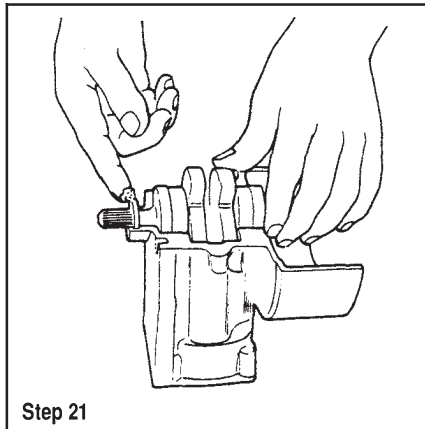
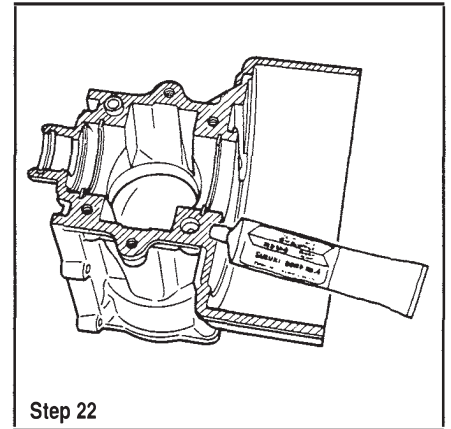


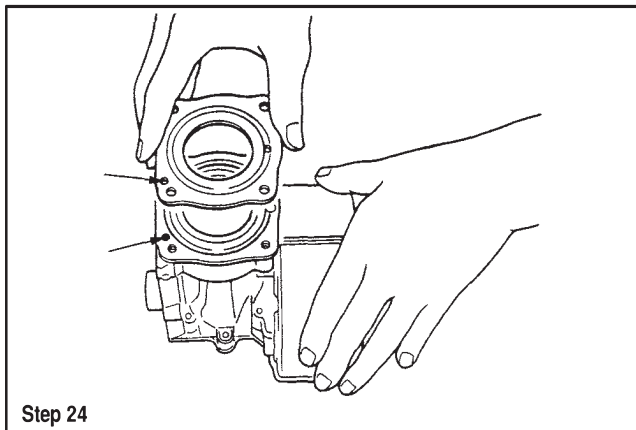
Step 20



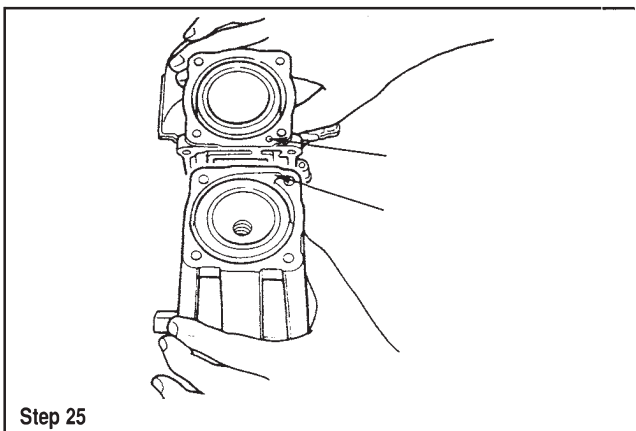
Step 21



Step 22



Step 24



Step 25

20. Install the rotating assembly into the cylinder block, making sure the crankshaft faces the correct way. The splined end of the crankshaft should face driveshaft housing side.

21. Apply marine grease to the O-ring and the splined portion of the crankshaft. Install the O-ring.

22. Apply a bead of Suzuki Bond No. 4 (99000-31030), or equivalent sealer to the crankcase halves (shaded areas in the illustration).

23. Tighten the crankcase bolts to specification in several stages using a criss-cross pattern.

24. Install a new cylinder head gasket noting the position of the cooling water hole.

25. Install the cylinder head matching the waterway on the head to the water hole on the cylinder block.

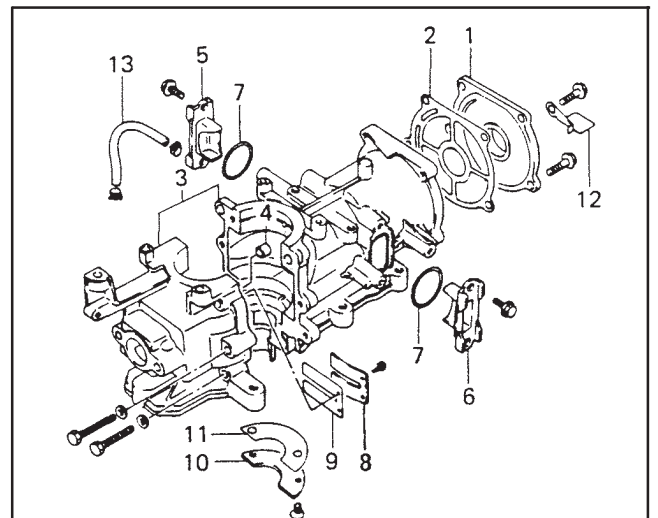
26. Tighten the cylinder head nuts to specification in several stages using a criss-cross pattern.

27. Rotate the crankshaft several turns to check for binding. If crankshaft does not turn freely, determine the cause and correct prior to assembling the powerhead.

DT4 and DT5Y

▶ See Figures 1 and 2

1. Loosen the clips and disconnect the lubrication hose from each fitting.
2. Remove the mounting bolts and remove the rewind starter mounting base.
3. Remove the screws and remove the water jacket cover and gasket.
4. Loosen the cylinder head bolts in several stages using a criss-cross pattern.
5. Remove the cylinder head.
6. Loosen the crankcase bolts in several stages using a criss-cross pattern.
7. Carefully pry apart and separate the crankcase halves.
8. To remove the rotating assembly, hold the crankshaft while sliding the cylinder block away from the piston.



- | | |
|--------------------------------|-----------------------------|
| 1. Cover, cylinder head | 8. Stopper, reed valve |
| 2. Gasket, cylinder head cover | 9. Reed, valve |
| 3. Cylinder | 10. Cover, water jacket |
| 4. Dowel pin | 11. Gasket, water jacket |
| 5. Cover, port, R | 12. Cover, lower drain hole |
| 6. Cover, port, L | 13. Hose, lubrication |
| 7. O ring | |

Fig. 1 Exploded view of the powerhead—DT4