



Bulletin océanographique



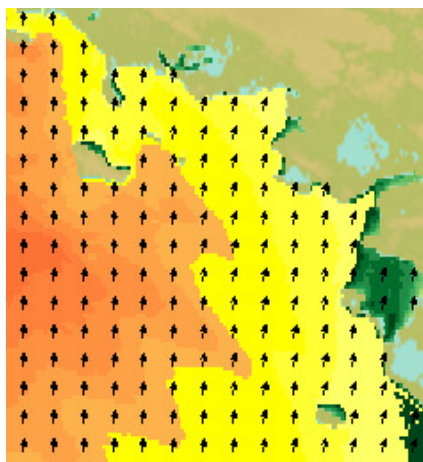
Généré le 15-11-2022

Cartes	2
Océanogrammes	10
Horaires de marées	11

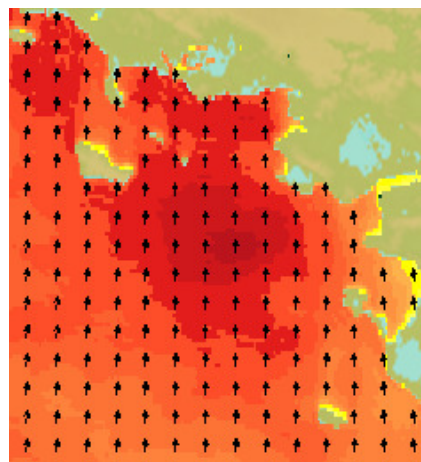


L'océan en référence

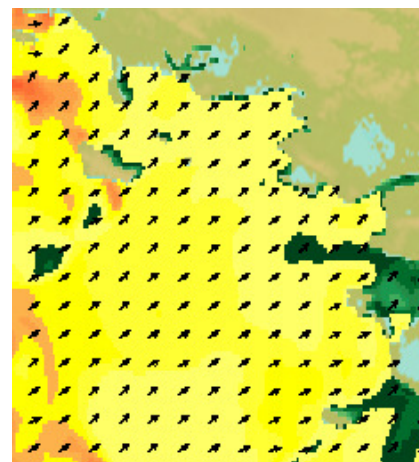
Vitesse et direction du vent



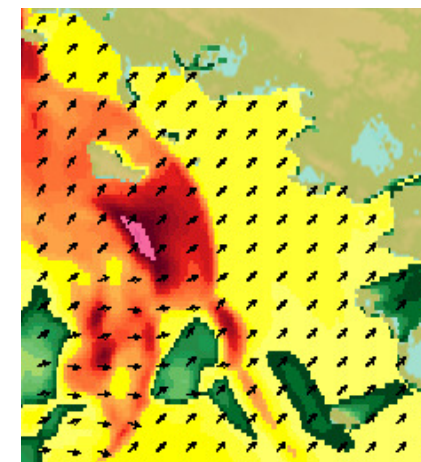
15/11/2022 00:00:00 UTC+2 (10 m)



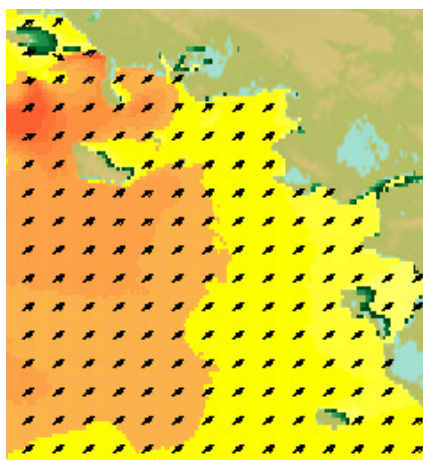
15/11/2022 06:00:00 UTC+2 (10 m)



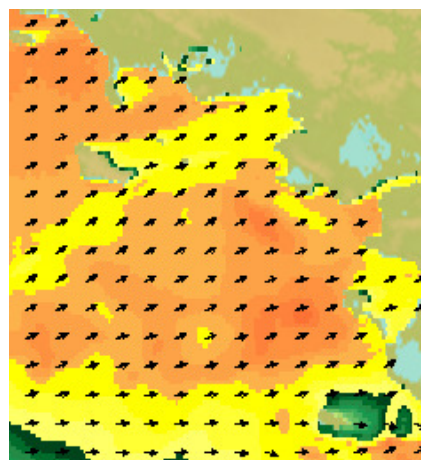
15/11/2022 12:00:00 UTC+2 (10 m)



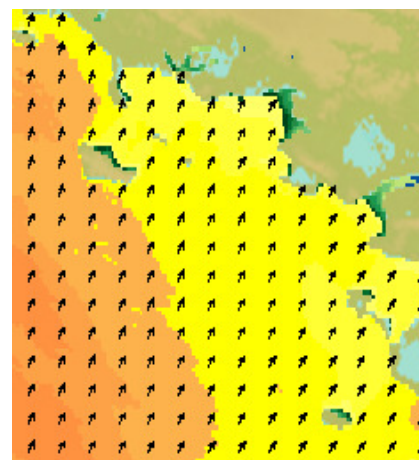
15/11/2022 18:00:00 UTC+2 (10 m)



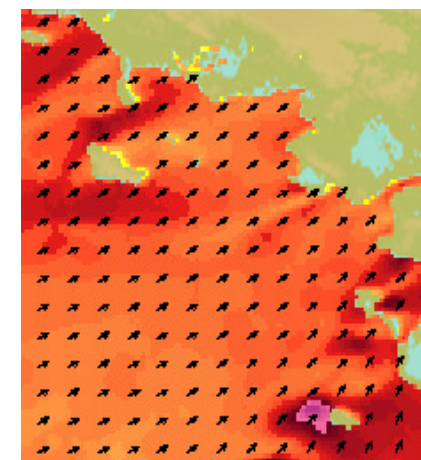
16/11/2022 00:00:00 UTC+2 (10 m)



16/11/2022 06:00:00 UTC+2 (10 m)

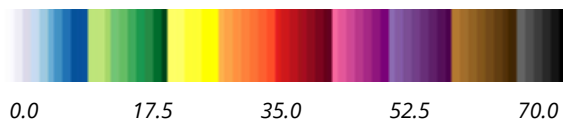


16/11/2022 12:00:00 UTC+2 (10 m)



16/11/2022 18:00:00 UTC+2 (10 m)

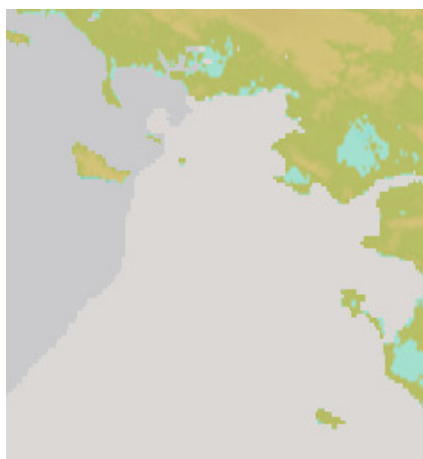
Unité noeuds



Informations sur les modèles utilisés :

"METEO_AROME_R1100_EURW1S100-MER"(MAJ: 2022-11-15 00:00:00) - source : CEPMMT et Météo-France,
 "METEO_ARPEGE_R1000_EURAT01-MER"(MAJ: 2022-11-15 00:00:00) - source : CEPMMT et Météo-France

Pression atmosphérique en surface



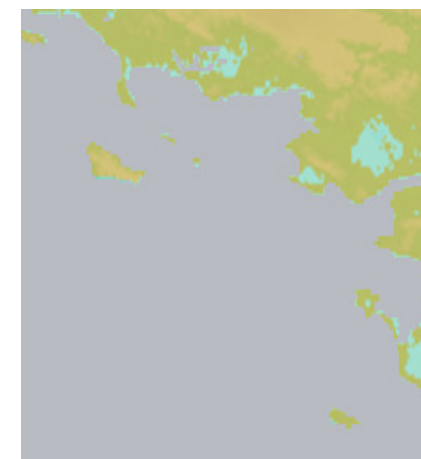
15/11/2022 00:00:00 UTC+2 (0 m)



15/11/2022 06:00:00 UTC+2 (0 m)



15/11/2022 12:00:00 UTC+2 (0 m)



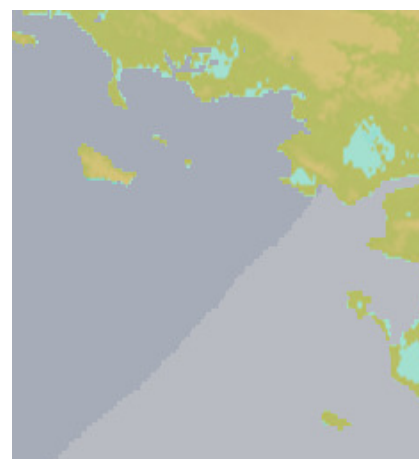
15/11/2022 18:00:00 UTC+2 (0 m)



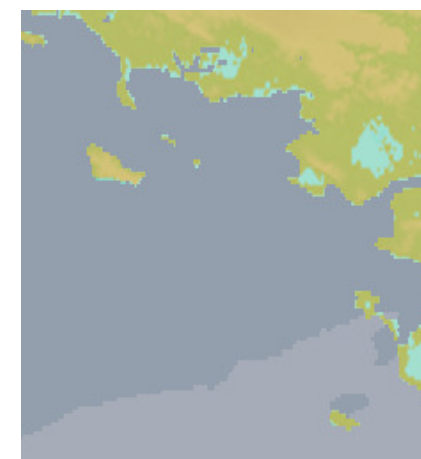
16/11/2022 00:00:00 UTC+2 (0 m)



16/11/2022 06:00:00 UTC+2 (0 m)

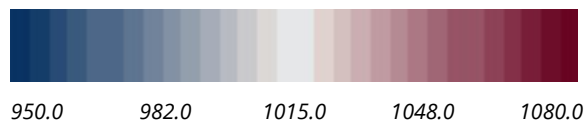


16/11/2022 12:00:00 UTC+2 (0 m)



16/11/2022 18:00:00 UTC+2 (0 m)

Unité hPa

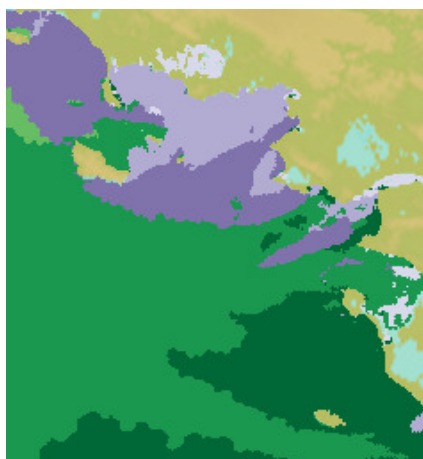


Informations sur les modèles utilisés :

"METEO_AROME_R1100_EURW1S100-MER"(MAJ: 2022-11-15 00:00:00) - source : CEPMMT et Météo-France,

"METEO_ARPEGE_R1000_EURAT01-MER"(MAJ: 2022-11-15 00:00:00) - source : CEPMMT et Météo-France

Periode mer totale



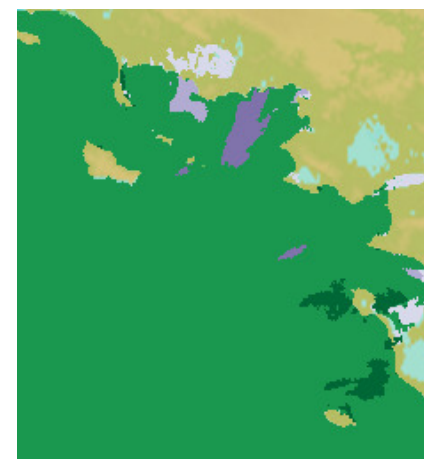
15/11/2022 00:00:00 UTC+2 (0 m)



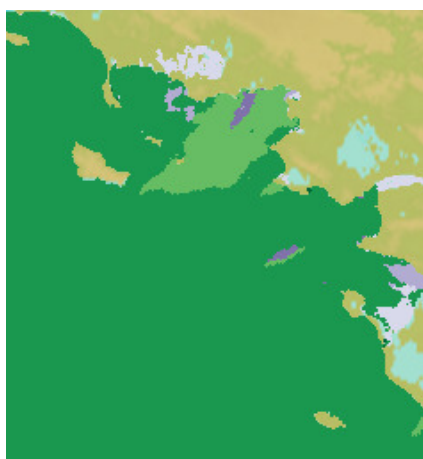
15/11/2022 06:00:00 UTC+2 (0 m)



15/11/2022 12:00:00 UTC+2 (0 m)



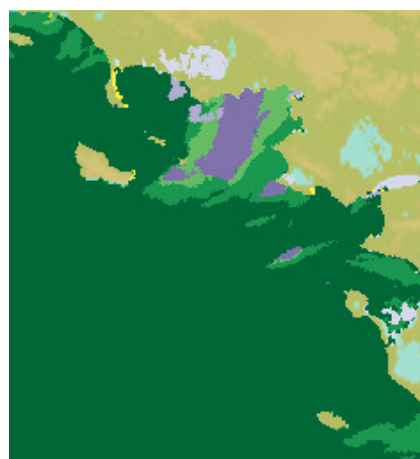
15/11/2022 18:00:00 UTC+2 (0 m)



16/11/2022 00:00:00 UTC+2 (0 m)



16/11/2022 06:00:00 UTC+2 (0 m)

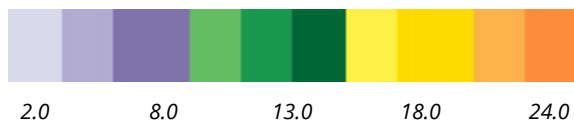


16/11/2022 12:00:00 UTC+2 (0 m)



16/11/2022 18:00:00 UTC+2 (0 m)

Unité s



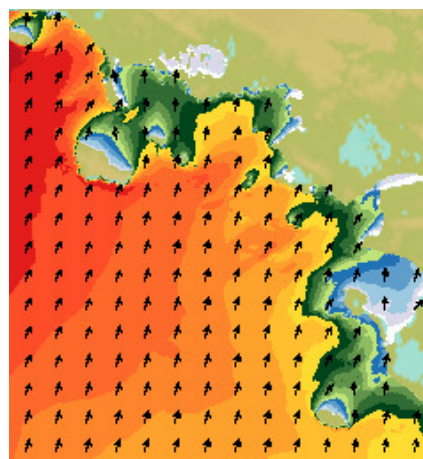
Informations sur les modèles utilisés :

"VAGUES_WW3_R1132_LOIRE-200M"(MAJ: 20221115 00:00:00) - source : Shom et Météo France

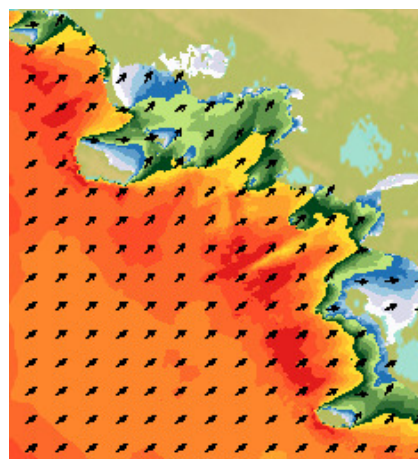
Mer du vent (hauteur et direction)



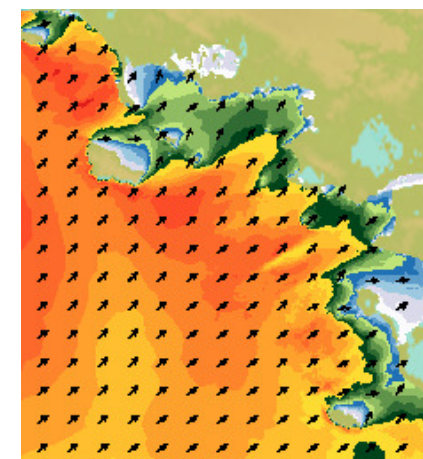
15/11/2022 00:00:00 UTC+2 (0 m)



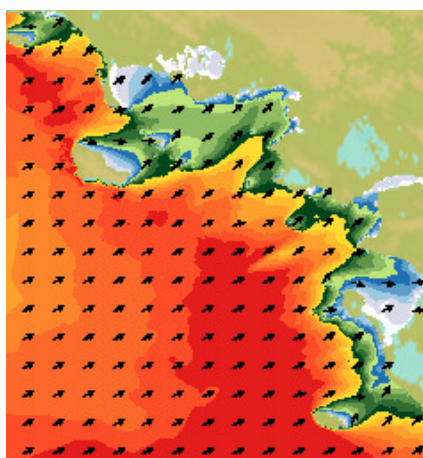
15/11/2022 06:00:00 UTC+2 (0 m)



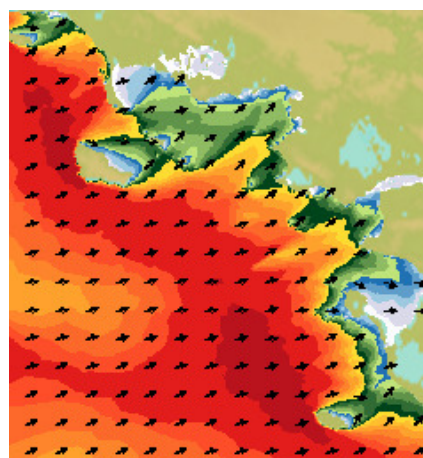
15/11/2022 12:00:00 UTC+2 (0 m)



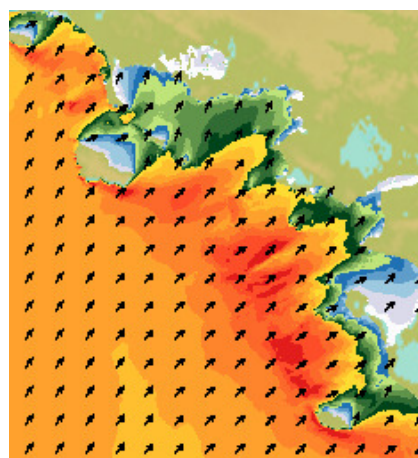
15/11/2022 18:00:00 UTC+2 (0 m)



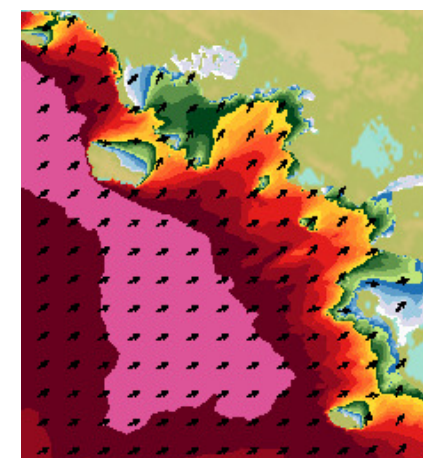
16/11/2022 00:00:00 UTC+2 (0 m)



16/11/2022 06:00:00 UTC+2 (0 m)



16/11/2022 12:00:00 UTC+2 (0 m)



16/11/2022 18:00:00 UTC+2 (0 m)

Unité m

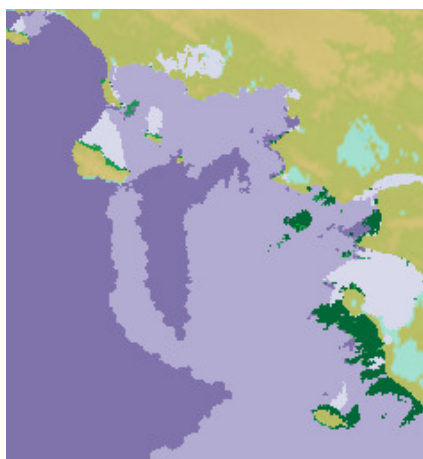


0.0 3.8 7.5 11.2 15.0

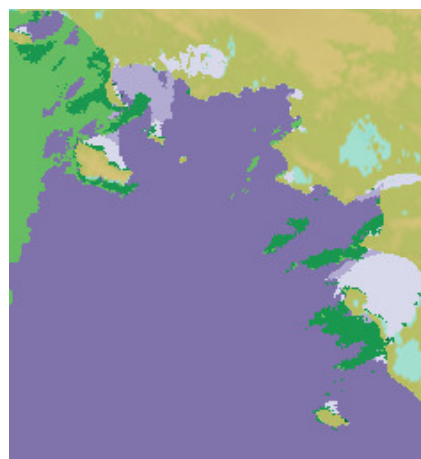
Informations sur les modèles utilisés :

"VAGUES_WW3_R1132_LOIRE-200M"(MAJ: 20221115 00:00:00) - source : Shom et Météo France

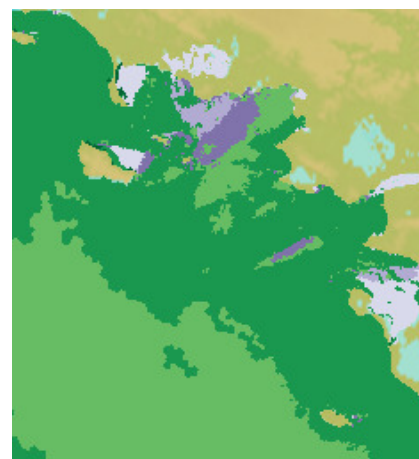
Periode mer du vent



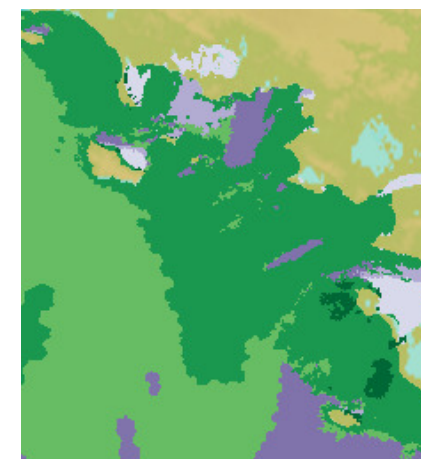
15/11/2022 00:00:00 UTC+2 (0 m)



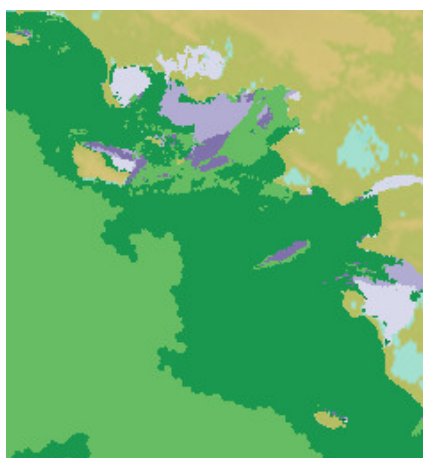
15/11/2022 06:00:00 UTC+2 (0 m)



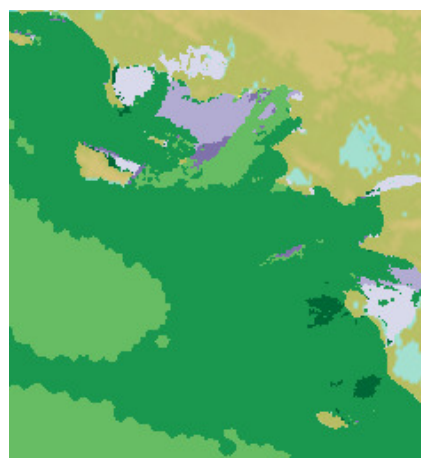
15/11/2022 12:00:00 UTC+2 (0 m)



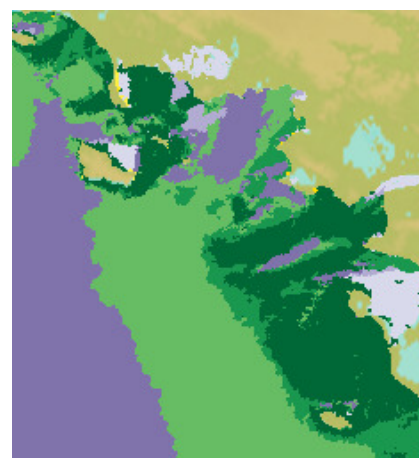
15/11/2022 18:00:00 UTC+2 (0 m)



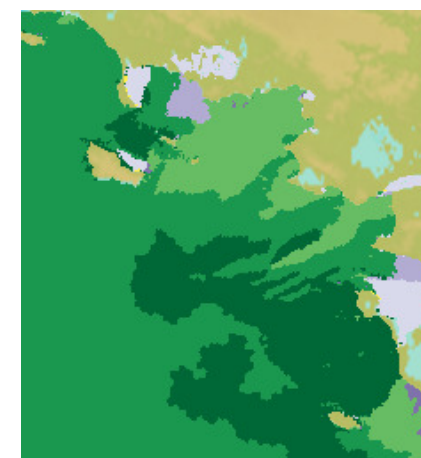
16/11/2022 00:00:00 UTC+2 (0 m)



16/11/2022 06:00:00 UTC+2 (0 m)



16/11/2022 12:00:00 UTC+2 (0 m)



16/11/2022 18:00:00 UTC+2 (0 m)

Unité s

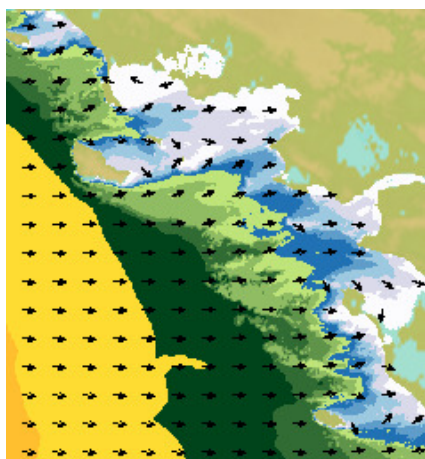


2.0 8.0 13.0 18.0 24.0

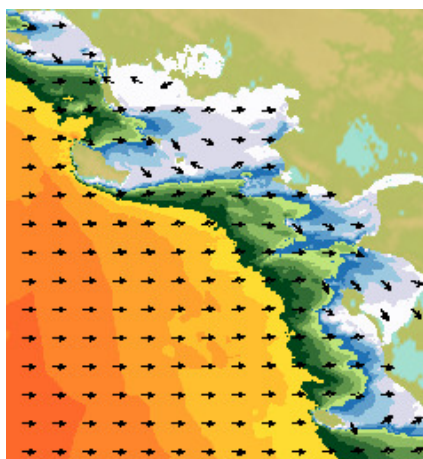
Informations sur les modèles utilisés :

"VAGUES_WW3_R1132_LOIRE-200M"(MAJ: 20221115 00:00:00) - source : Shom et Météo France

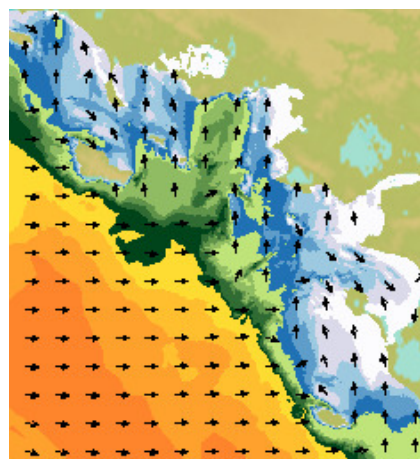
Houle primaire (hauteur et direction)



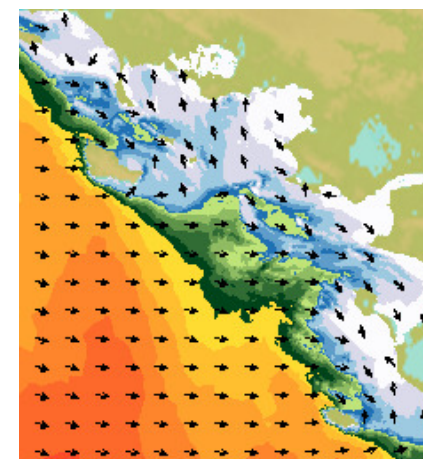
15/11/2022 00:00:00 UTC+2 (0 m)



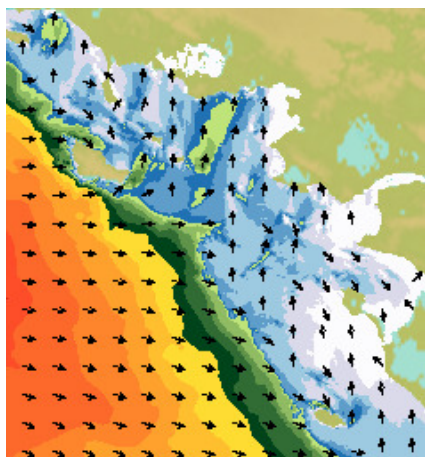
15/11/2022 06:00:00 UTC+2 (0 m)



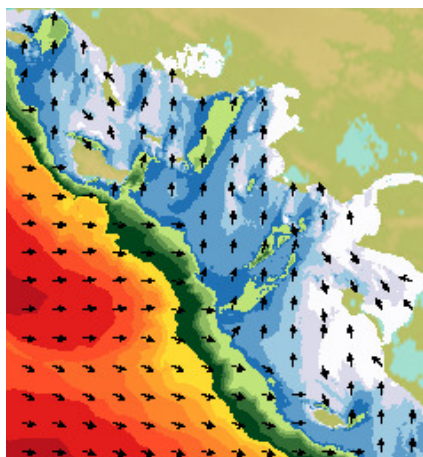
15/11/2022 12:00:00 UTC+2 (0 m)



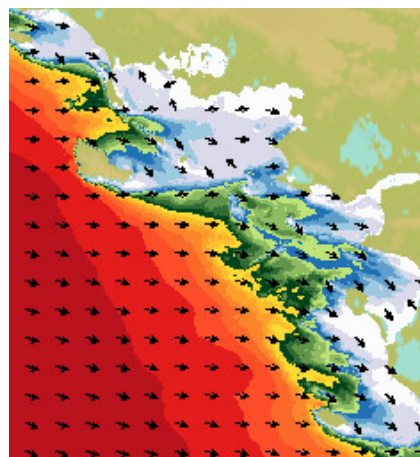
15/11/2022 18:00:00 UTC+2 (0 m)



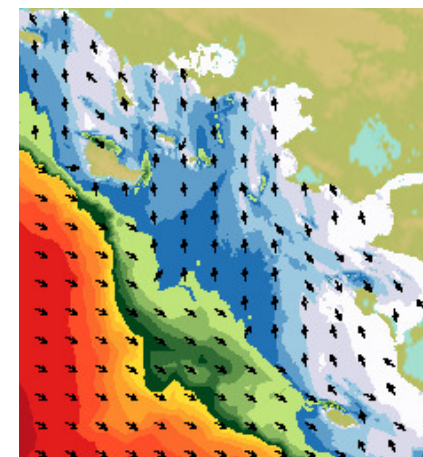
16/11/2022 00:00:00 UTC+2 (0 m)



16/11/2022 06:00:00 UTC+2 (0 m)

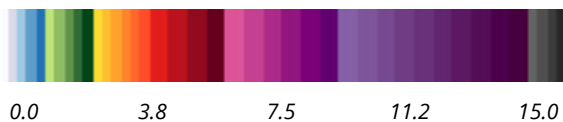


16/11/2022 12:00:00 UTC+2 (0 m)



16/11/2022 18:00:00 UTC+2 (0 m)

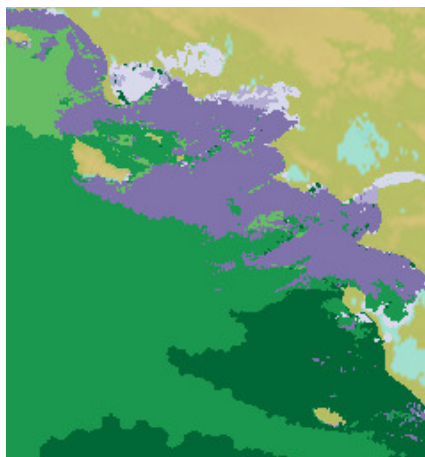
Unité m



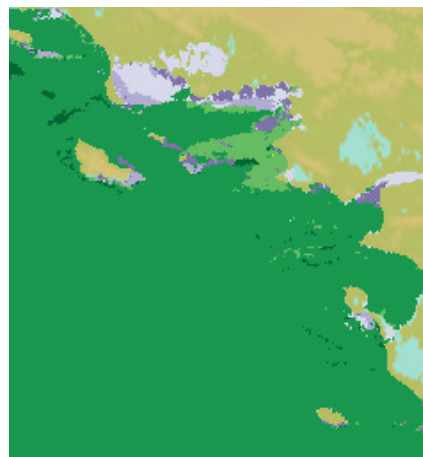
Informations sur les modèles utilisés :

"VAGUES_WW3_R1132_LOIRE-200M"(MAJ: 20221115 00:00:00) - source : Shom et Météo France

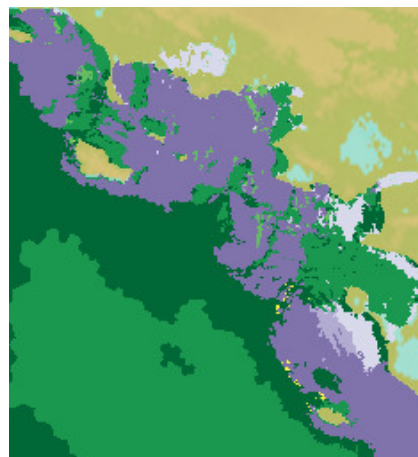
Periode houle primaire



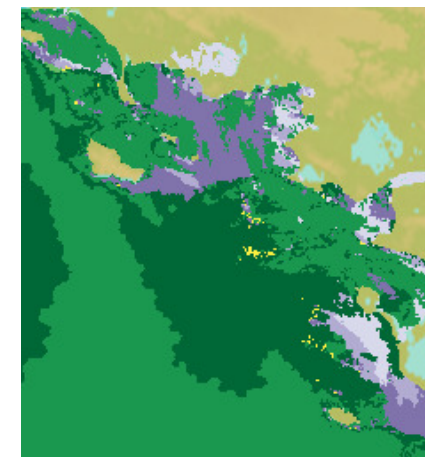
15/11/2022 00:00:00 UTC+2 (0 m)



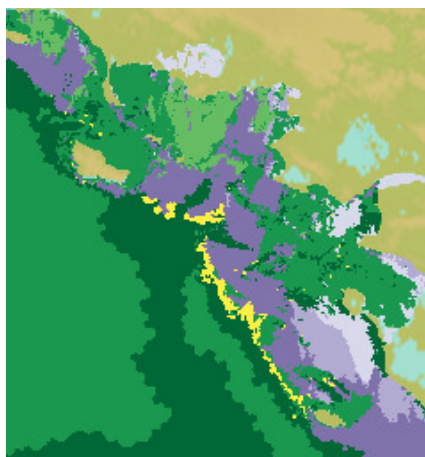
15/11/2022 06:00:00 UTC+2 (0 m)



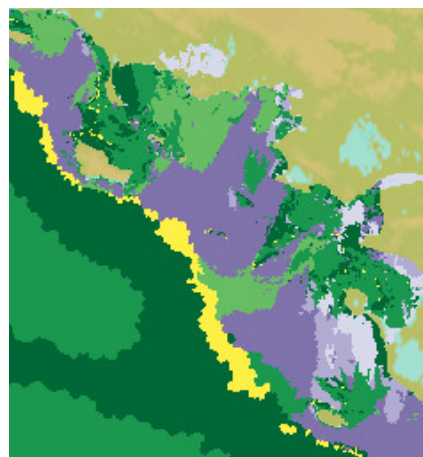
15/11/2022 12:00:00 UTC+2 (0 m)



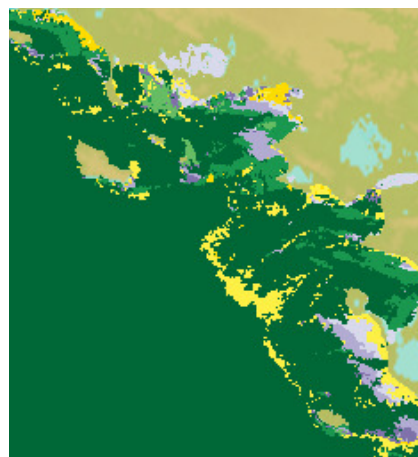
15/11/2022 18:00:00 UTC+2 (0 m)



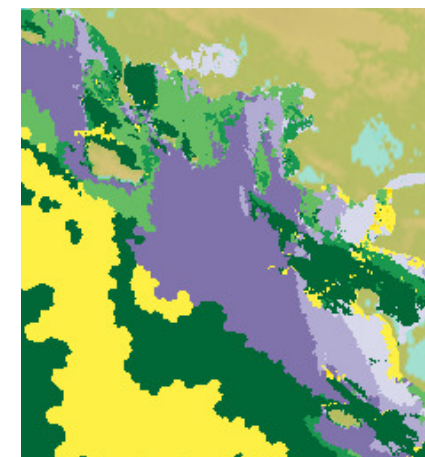
16/11/2022 00:00:00 UTC+2 (0 m)



16/11/2022 06:00:00 UTC+2 (0 m)

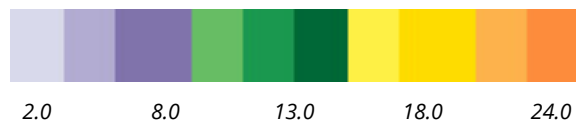


16/11/2022 12:00:00 UTC+2 (0 m)



16/11/2022 18:00:00 UTC+2 (0 m)

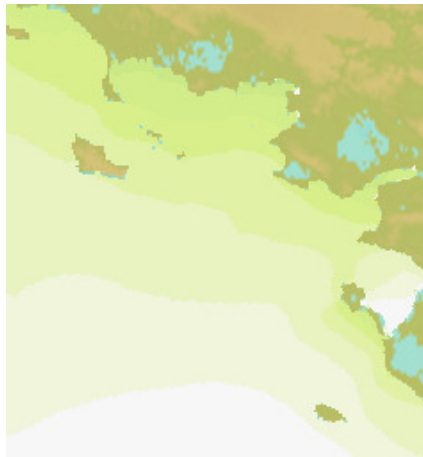
Unité s



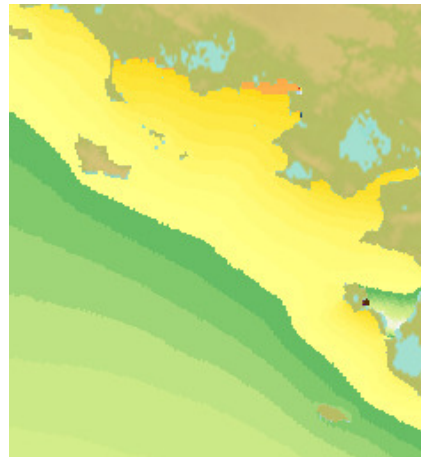
Informations sur les modèles utilisés :

"VAGUES_WW3_R1132_LOIRE-200M"(MAJ: 20221115 00:00:00) - source : Shom et Météo France

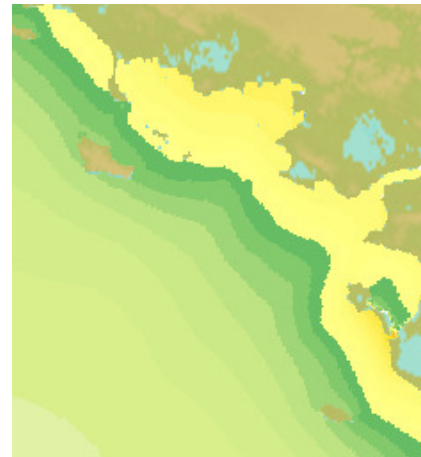
Surcote



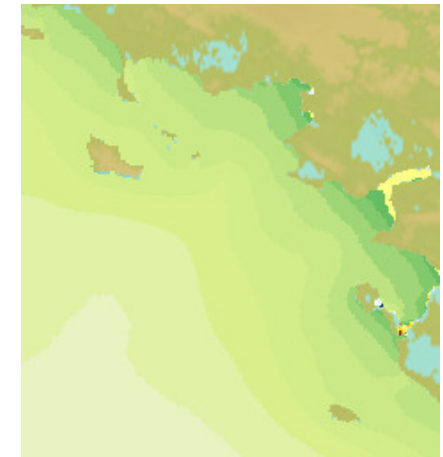
15/11/2022 00:00:00 UTC+2 (0 m)



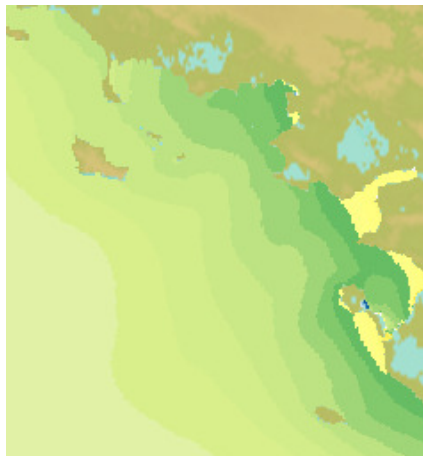
15/11/2022 06:00:00 UTC+2 (0 m)



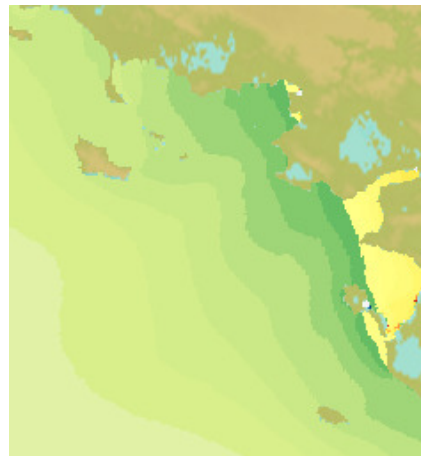
15/11/2022 12:00:00 UTC+2 (0 m)



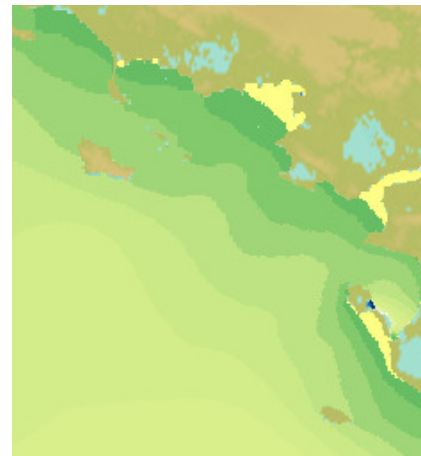
15/11/2022 18:00:00 UTC+2 (0 m)



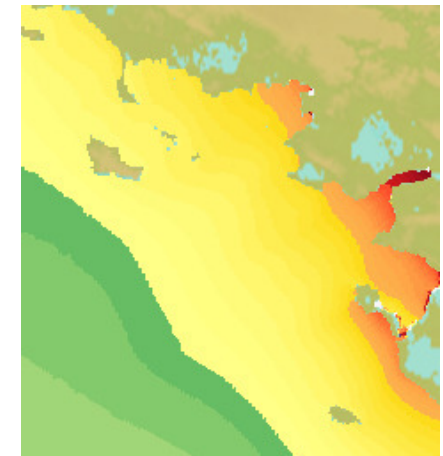
16/11/2022 00:00:00 UTC+2 (0 m)



16/11/2022 06:00:00 UTC+2 (0 m)

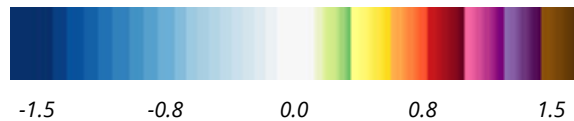


16/11/2022 12:00:00 UTC+2 (0 m)



16/11/2022 18:00:00 UTC+2 (0 m)

Unité m



Informations sur les modèles utilisés :

"NIVEAUX_HYCOM2D_R1000_ATL-CG"(MAJ: 2022-11-15 00:00:00) - source : Shom et Météo France

Hoëdic (HOEDIC) France

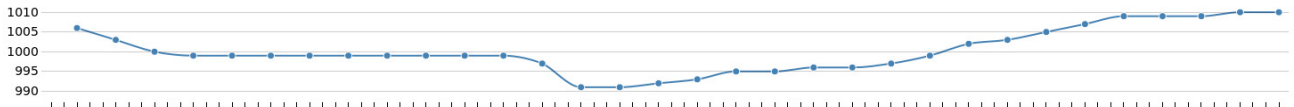
Océanogramme (Prévisions sur 4 jours)

Hoëdic (47.3506° ; -2.8734°)

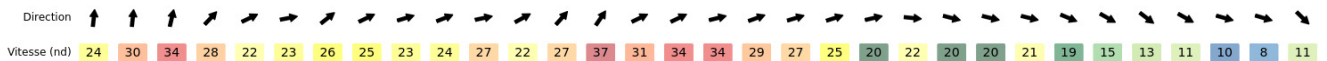
UTC+2

Mardi 15 Novembre					Mercredi 16 Novembre					Jeudi 17 Novembre					Vendredi 18 Novembre																
☀️ 09:17 -- 18:34					☀️ 09:18 -- 18:33					☀️ 09:20 -- 18:32					☀️ 09:21 -- 18:31																
🌊 15.5° 34.4 Psu					🌊 15.4° 34.6 Psu					🌊 15.1° 34.5 Psu					🌊 15.2° 34.7 Psu																
Coeff. 39 35					Coeff. 31 30					Coeff. 30 ---					Coeff. 32 36																
02h	05h	08h	11h	14h	17h	20h	23h	02h	05h	08h	11h	14h	17h	20h	23h	02h	05h	08h	11h	14h	17h	20h	23h	02h	05h	08h	11h	14h	17h	20h	23h

Pression atmosphérique (hPa)



Vent



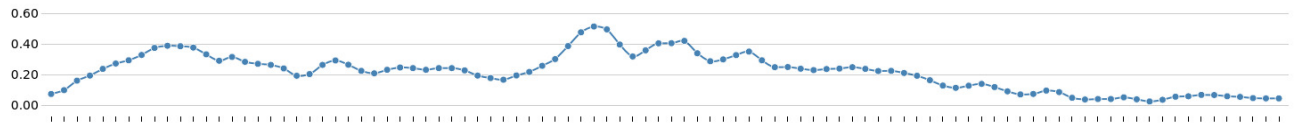
Vagues (mer totale)



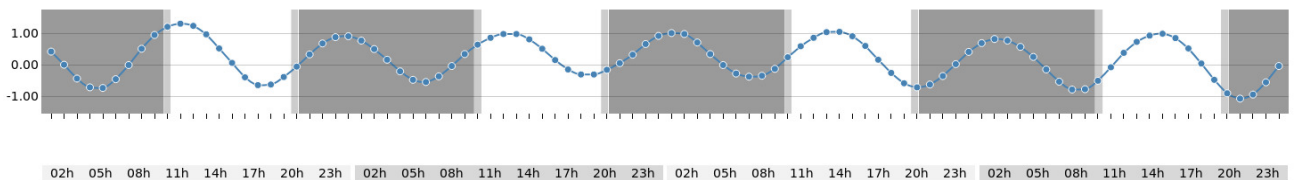
Courant de surface



Surcote météorologique (m)



Hauteur d'eau par rapport au niveau moyen (m)



Information sur les modèles utilisés

"Meteo" (47.3506 -2.8734) : "Modèle ARPEGE" (MAJ : 2022-11-15 00:00:00) - source : CEPMMT et Météo-France
 "Vagues" (47.3506 -2.8734) : "Modèle WW3" (MAJ : 2022-11-15 00:00:00) - source : Shom et Météo France
 "Niveaux" (47.3506 -2.8734) : "Modèle HYCOM2D" (MAJ : 2022-11-15 00:00:00) - source : Shom et Météo France
 "Hydrodyn-surf" (47.3676 -2.8767) : "Modèle HYCOM3D-SURF" (MAJ : 2022-11-15 00:00:00) - source : Shom
 "Hydrodyn-mj" (47.3676 -2.8767) : "Modèle HYCOM3D-MJ" (MAJ : 2022-11-15 00:00:00) - source : Shom
 "Ephémérides" (47.3506 -2.8734) - <http://vo.imcce.fr> - source : IMCCE

Hoedic (HOEDIC) France

HORAIRE DES MARÉES

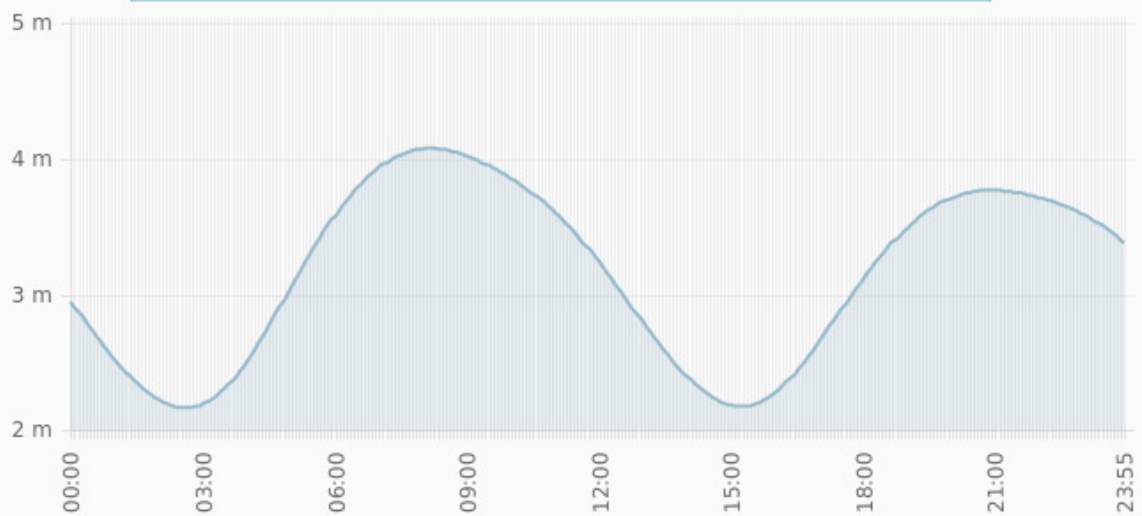
Hoedic

Système horaire : Heure légale



Mardi 15 novembre 2022

	Heure	Hauteur	Coeff.
BM	02:36	2.16	---
PM	08:10	4.08	39
BM	15:13	2.18	---
PM	20:53	3.77	35



Jours suivants

16/11/2022				17/11/2022				18/11/2022			
	Heure	Hauteur	Coeff.		Heure	Hauteur	Coeff.		Heure	Hauteur	Coeff.
BM	03:33	2.35	---	BM	04:41	2.40	---	PM	00:19	3.87	32
PM	09:24	3.90	31	PM	11:22	3.89	30	BM	05:54	2.30	---
BM	16:16	2.30	---	BM	17:31	2.26	---	PM	12:32	4.05	36
PM	23:05	3.72	30	---	--:--	---	---	BM	18:40	2.06	---

19/11/2022				20/11/2022				21/11/2022			
	Heure	Hauteur	Coeff.		Heure	Hauteur	Coeff.		Heure	Hauteur	Coeff.
PM	01:09	4.11	42	PM	01:49	4.39	54	PM	02:26	4.67	67
BM	06:56	2.05	---	BM	07:46	1.74	---	BM	08:28	1.42	---
PM	13:21	4.28	48	PM	14:02	4.55	60	PM	14:40	4.81	73
BM	19:32	1.76	---	BM	20:15	1.45	---	BM	20:54	1.16	---

[Tous les horaires de marées en France et dans le monde](#)

Pour vos activités en mer, découvrez l'Espace de Diffusion du Shom

Prévisions océanographiques côtières

Avec le soutien financier de



UNION EUROPÉENNE
UNANIEZH EUROPA



L'Europe s'engage
en Bretagne / Avec le Fonds européen
de développement régional



Brest
MÉTROPOLE



Et en partenariat scientifique avec



adresse postale

13 rue du Chatellier - CS 92803
29 228 BREST CEDEX 2 - France

renseignements

+33 (0) 2 56 312 312

Internet

www.shom.fr | data.shom.fr | diffusion.shom.fr

