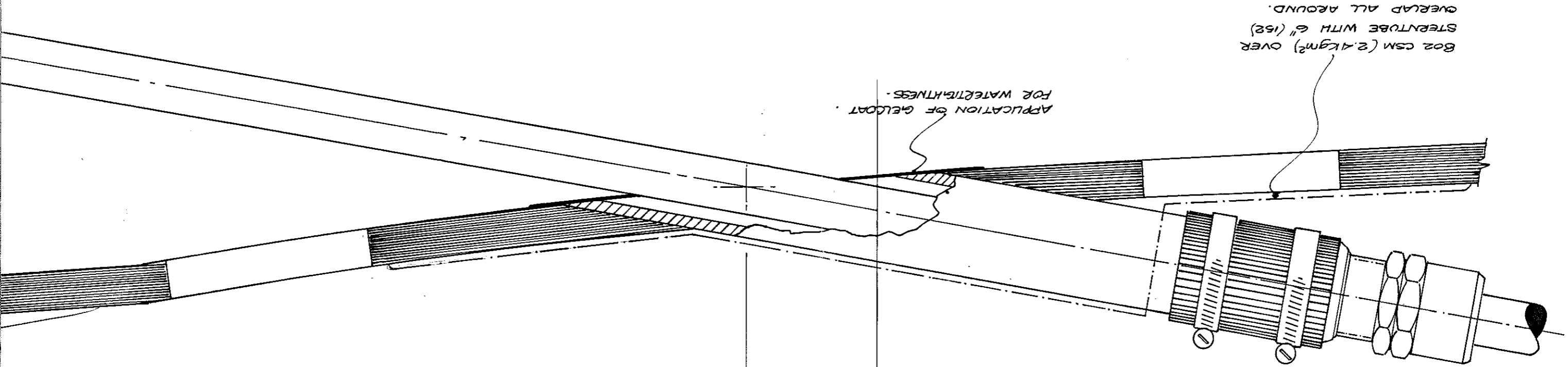


HALF FULL SIZE: PROPELLOR BRACKET
 STERN TUBE INSTALLATION DETAILS.



APPLICATION OF GELCOAT FOR WATERBIGHTNESS.

602 CSM (2.4kgm²) OVER STERN TUBE WITH 6" (152) OVERLAP ALL AROUND.

2 3/4"
 69

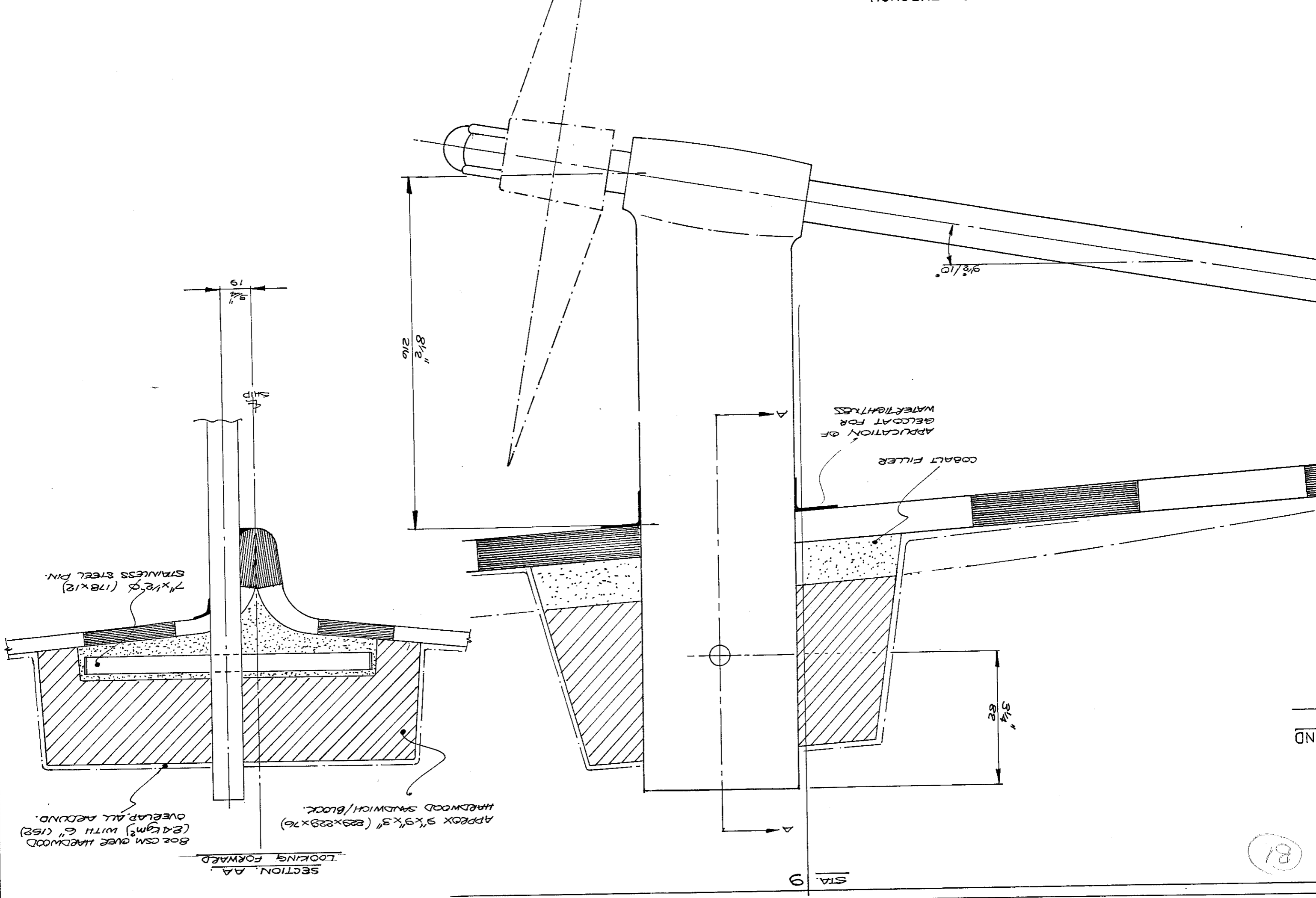
STA. B

A1	A2
B1	B2

(A1)

Scanned in 4 sections

DWL



SECTION AA
LOOKING FORWARD

8oz CSM OVER HARDWOOD
(2.4kg/m²) WITH 6" (152)
OVERLAP ALL AROUND.

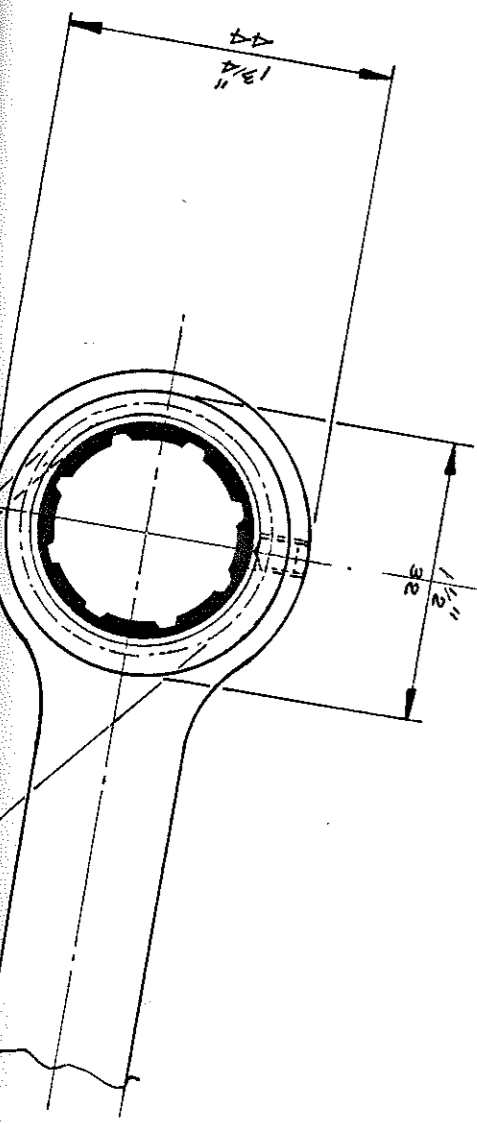
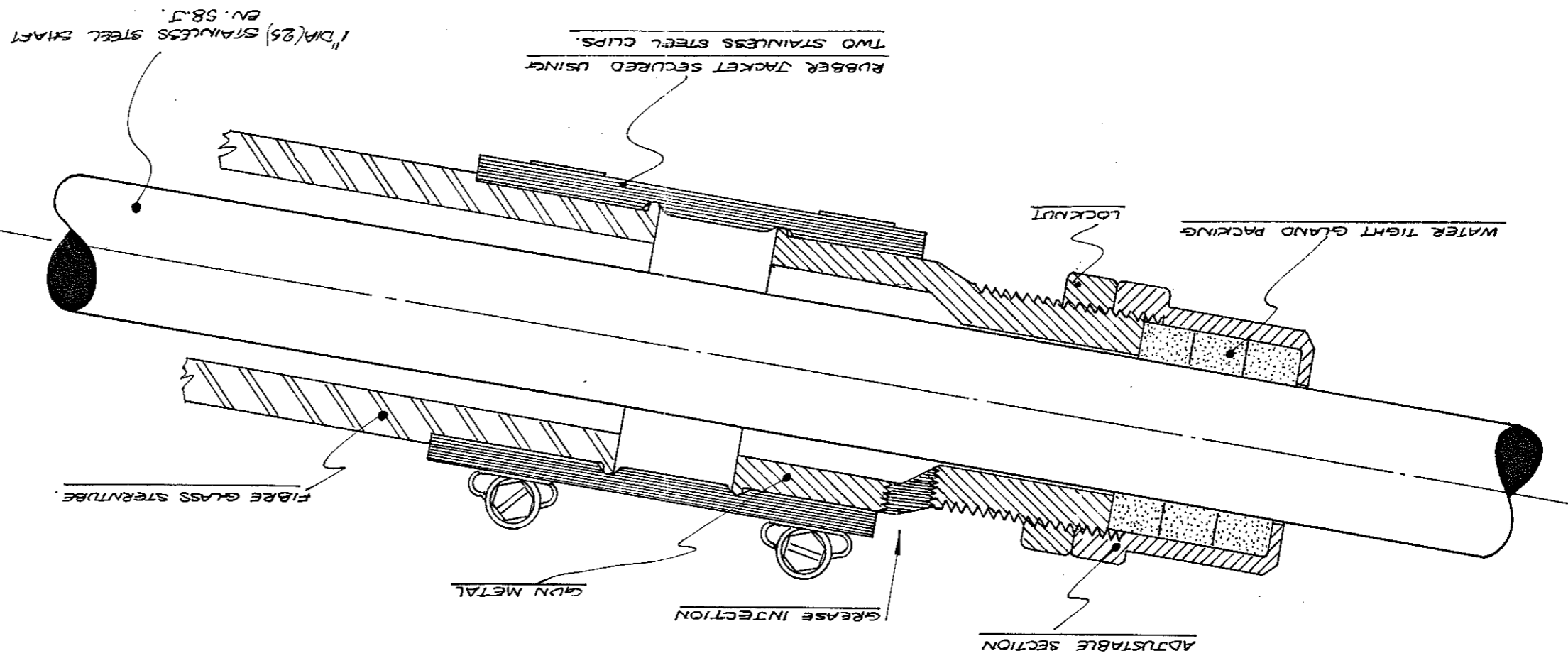
APPROX 9"x9"x3" (229x229x76)
HARDWOOD SANDWICH/BLOCK.

7"x1/2" (178x12)
STAINLESS STEEL PIN.

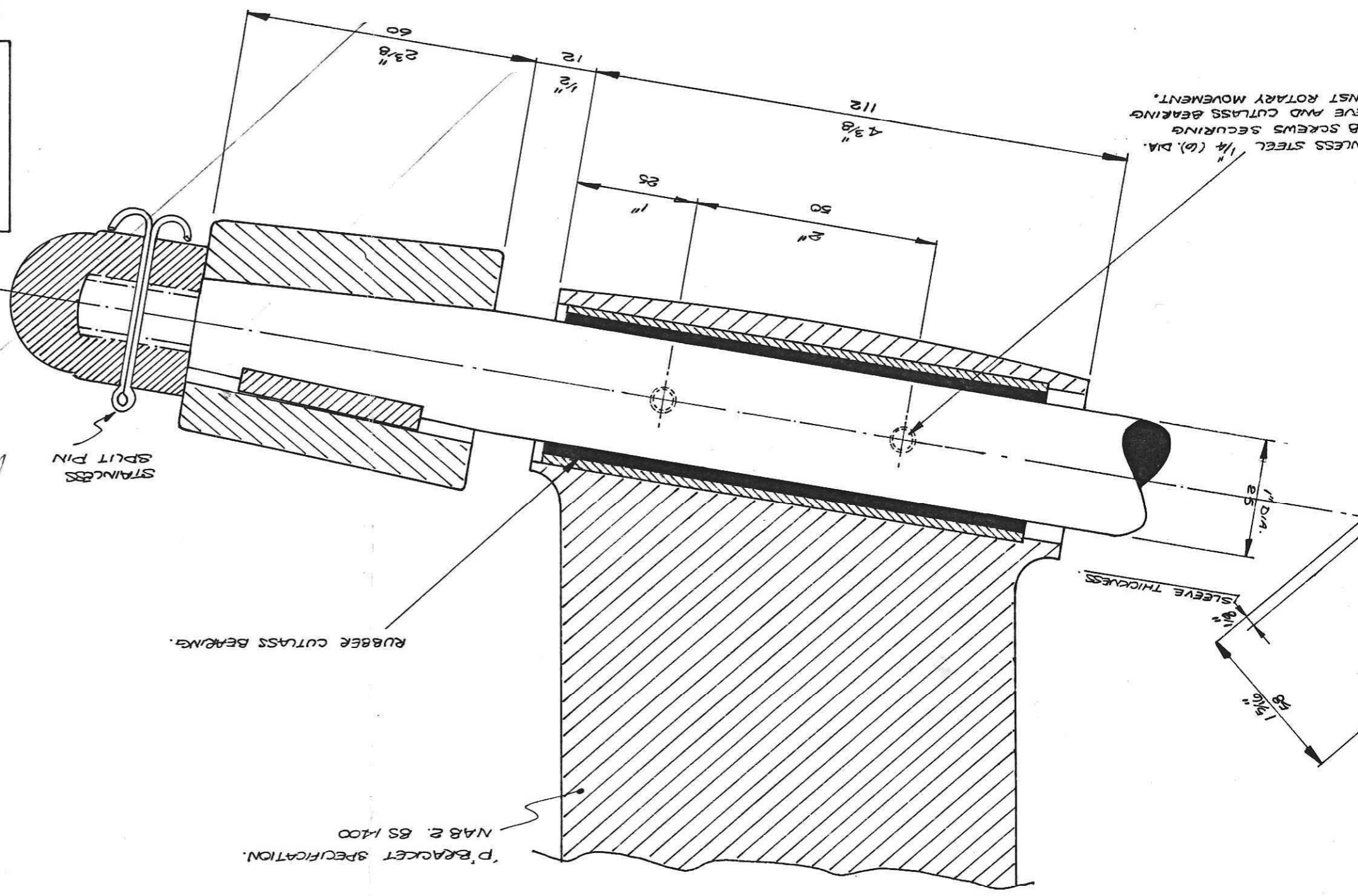
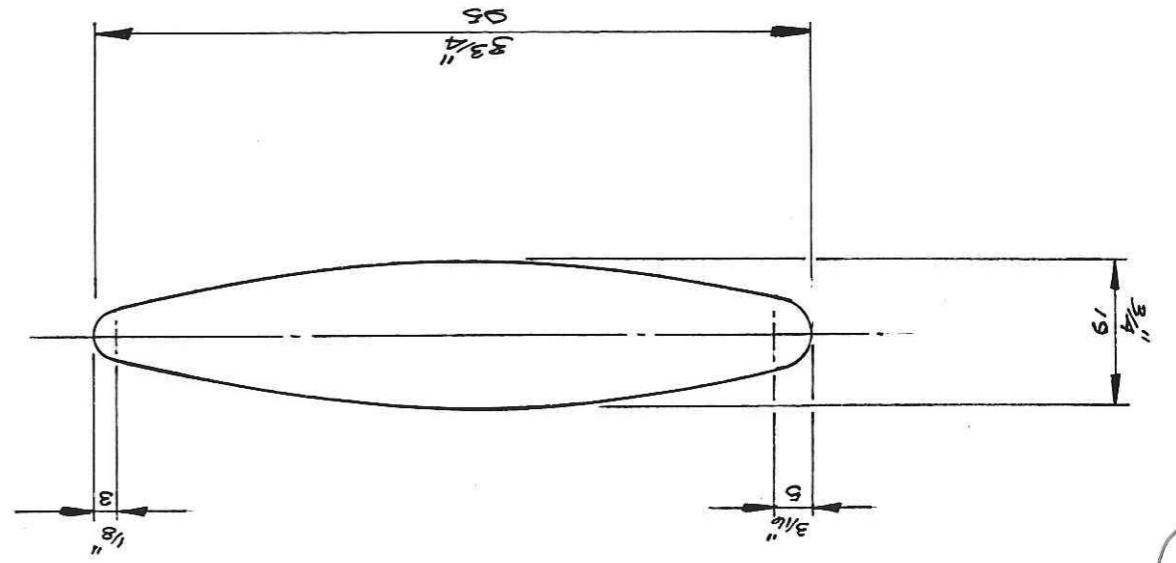
STA. 9

COBALT FILER
APPLICATION OF
GELCOAT FOR
WATER-TIGHTNESS

FULL SIZE SECTION THROUGH
STERN TUBE / SHAFTGLAND



PROPELLER BRACKET BEARING.



SUPERSEDED

MARINE PROJECTS (PLYMOUTH) LTD.
 MOODY 31
 P' BRACKET AND STERN TUBE INSTALLATIONS.
 DR. ECT 16.10.83.
 SCALE: 1/2 FS. & RS.
 DRN# M31.008

SUPERSEDED

*SUPERSEDED
 see Gen in process
 drawings (Kemp's approval)*

MARINE PROJECTS
 03 SEP 1999
 ISSUED BY THE D.O.

UNCONTROLLED

BOAT TYPE MOODY 31

KIT No E2400 UPHOLSTERY SUMMARY

M P Part No	QUANTITY		MATERIALS				
-	-		HEADLINING				
C815005	15	METRE	IVORY / PERCAMINO PLAIN BACHED				
C815010	9	METRE	IVORY / PERCAMINO FOAM BACHED.				
			SIDE LINING.				
C815090	15	50 METRE	SIDE LINING LIGHT FLAX				
			CUSHIONS				
C841250	2	SH	FOAM YELLOW 4"				
C841340	1	SH	FOAM PINK 4" 2133X1650mm				
C841610	0.25	SH	FOAM BONDED CHIP 2"				
C843040	5	LENGTHS	FOAM PROFILE 'D' 9x5"				
C843030	5	LENGTHS	FOAM PROFILE 'B' 9x2 1/2				
C843015	4		FOAM WEDGES 36X10X1.5				
			MATERIAL				
C813105	27	METRE	ZIPPER BLUE FLASH VELVET				
C811120	18	"	LARVIT BROWN				
C831050	0.22	ROLL	FASTEN ZIP WHITE				
C831060	20		FASTEN ZIP NOS SLIDES WHITE				
C895010	0.5	ROLL	FIBRO STOCKINETT				
			MISC				
C833020	2	METRE	VELCRO 30mm SELF STICK				
C833030	2	"	" 30mm PLAIN				
C870150	0.4		CARPET DEMOS 25'X12'				
			* TIMBER INC IN KIT PARTS				
			TOTAL MATERIAL COST				
			PROCESSED				
			LABOUR				
			AVERAGE HOURS.....				

MOODY 31

MOODY 34

Hull No.	Set of Mouldings	Season '83
E2001	Moody	
E2002	M. Seeb.	
E2003	Moody	
E2004	C. Knap	Jan Show '84
E2005	Moody	Jan '84.
E2006	(")	Feb.
E2007	"	Dec. '83 (E/C)
E2008	"	Feb.
E2009	"	"
E2010	"	"
E2011	Schaeffer.	Jan '84 - kr boat (Disseldorf)
E2012	M. Seeb.	Jan. (Disseldorf)
E2013	X Schaeffer.	March Feb.
E2014	Moody.	→ Feb.
E2015	M. Seeb.	March.
E2016	Moody.	→ Feb.
E2017	Moody.	March.
E2018	Moody.	April. March
E2019	Rub. Vandyjke.	April. "
E2020	Moody.	→ "
E2021	Moody.	April.
E2022	M. Seeb.	→ May April.
E2023	Moody.	→ April.
E2024	Moody.	→ May
E2025	Top. Yacht Jan	" → May
E2026	Moody.	→ May
E2027	Moody.	→ June May.
E2028	Moody.	→ "
E2029	M. Seeb.	→ June.
E2030	X Schaeffer.	→ May

Hull No.	Moody	Notes
G1001	Moody	
G1002	"	
G1003	"	La Rochelle Show
G1004	"	Season '83
G1005	"	Annapolis
G1006	"	
G1007	"	(Kr Boat)
G1008	M. Seeb.	
G1009	Moody	
G1010	"	
G1011	"	
G1012	"	
G1013	Kip	
G1014	Moody	
G1015	"	E/C boat '84.
G1016	"	Jan. (2nd)
G1017	"	" (3rd)
G1018	Vandyk.	Dec.
G1019	Schaeffer	Jan. '84 (1st)
G1020	Moody.	Jan. (2nd)
G1021	Moody.	Feb.
G1022	M. Seeb.	"
G1023	Kip.	"
G1024	Moody	"
G1025	Rub. Vandyjke	"
G1026	Moody.	March
G1027	Moody.	"
G1028	Moody.	"
G1029	Schaeffer.	"
G1030	Moody.	"
G1031	Kip.	April

11/3/85	Woody	G1093	Ms. Seal	E2082
May	Woody	G1092	X (Woody) MS Seal	E2081
11/3/85	Woody	G1091	M. Seal	E2080
March 25	Woody	G1090	then list due to incorrect numbering	E2079
April	Woody	G1089	Jan 85 Feb	E2078
April	Woody	G1088	Jan 85 Feb	E2077
March	Woody	G1087	Jan 85 Feb	E2076
March	Woody	G1086	Jan 85 Feb	E2075
Feb	Woody	G1085	November	E2074
Feb 85	Woody	G1084	Jan 85	E2073
March	Woody	G1083	X CHOICE LEO-ashley	E2072
Feb	Woody	G1082	Dec 85	E2071
Feb	Woody	G1081	Dec	E2070
and own 84	Woody	G1080	Dec	E2069
Jan 85	Woody	G1079	Nov 84	E2068
Jan 85	X CHOICE LEO-ashley	G1078	Dec	E2067
Jan 85	X (Woody)	G1077	Nov Dec	E2066
Jan 85	X Schocker	G1076	"	E2065
Jan 85	X Schocker	G1075	"	E2064
Jan 85	X (Schocker)	G1074	Nov	E2063
Jan 85	X Schocker	G1073	Oct Nov	E2062
Jan 85	Woody	G1072	Nov	E2061
Jan 85	Schocker	G1071	"	E2060
Jan 85	Woody	G1070	"	E2059
Jan 85	Woody	G1069	"	E2058
Jan 85	Woody	G1068	"	E2057
Jan 85	Woody	G1067	"	E2056
Jan 85	X (Schocker)	G1066	"	E2055
Jan 85	Woody	G1065	"	E2054
Jan 85	Ms. Seal	G1064	Nov	E2053
Jan 85	Woody	G1063	"	E2052

(61153, 54+55 missed off in error) - 20/11/84

91124	Moody	June 85	91124	Moody	Jan 85
91115	Moody	August	91126	Moody	Insert 61153
91116	X Scheffer	"	91127	M Sec 1	Jan 85
91117	X removed from sched. 11/7/85	"	91128	M Sec 1	Feb 85
91118	Moody	Sept	91129	Moody	Feb 85
91119	X Kip/Manna	August	91130	Moody	Feb 85
91120	X Scheffer	removed 11/7/85	91131	Moody	Feb 85
91121	M sec	removed 11/7/85	91132	Moody	Feb 85
91122	M sec	"	91133	M Sec 1	Jan 85
91123	Moody	"	91134	Moody	Jan 85
91124	X Scheffer	removed 11/7/85	91135	Moody	removed 11/85
91125	Moody	"	91136	Moody	Jan 85
91126	removed 12/85	"	91137	Moody	Jan 85
91127	Moody	Sept 85	91138	M Sec 1	Jan 85
91128	M Sec 1	"	91139	removed 6/85	removed 6/85
91129	kip	"	91140	Moody	Feb 85
91156	X removed 6/85	"	91141	removed 6/85	removed 6/85
91131	Moody	"	91142	Moody	Feb 85
91132	Moody	"	91143	Moody	Feb 85
91133	Moody	"	91144	Moody	Feb 85
91134	X removed 6/85	"	91145	Moody	Jan 85
91135	Moody	"	91146	Moody	Jan 85
91136	Moody	"	91147	Moody	Jan 85
91137	Moody	"	91148	Moody	Jan 85
91138	M Sec 1	"	91149	Scheffer	Jan 85
91139	removed 6/85	"	91150	C. Vank.	May 85
91140	Moody	"	91151	Denma	June 85
91141	removed 6/85	"	91152	removed 12/85	removed 12/85
91142	Moody	"	91153	removed 12/85	removed 12/85
91143	Moody	"	91154	Moody	Oct 85
91144	Moody	"	91155	Moody	Oct 85
91145	Moody	"	91156	Moody	Oct 85
91146	Moody	"	91157	Moody	Oct 85
91147	Moody	"	91158	Moody	Oct 85
91148	Moody	"	91159	Moody	Oct 85
91149	Moody	"	91160	Moody	Oct 85
91150	Moody	"	91161	Moody	Oct 85
91151	Moody	"	91162	Moody	Oct 85
91152	Moody	"	91163	Moody	Oct 85
91153	Moody	"	91164	Moody	Oct 85
91154	Moody	"	91165	Moody	Oct 85
91155	Moody	"	91166	Moody	Oct 85
91156	Moody	"	91167	Moody	Oct 85
91157	Moody	"	91168	Moody	Oct 85
91158	Moody	"	91169	Moody	Oct 85
91159	Moody	"	91170	Moody	Oct 85
91160	Moody	"	91171	Moody	Oct 85
91161	Moody	"	91172	Moody	Oct 85
91162	Moody	"	91173	Moody	Oct 85
91163	Moody	"	91174	Moody	Oct 85
91164	Moody	"	91175	Moody	Oct 85
91165	Moody	"	91176	Moody	Oct 85
91166	Moody	"	91177	Moody	Oct 85
91167	Moody	"	91178	Moody	Oct 85
91168	Moody	"	91179	Moody	Oct 85
91169	Moody	"	91180	Moody	Oct 85
91170	Moody	"	91181	Moody	Oct 85
91171	Moody	"	91182	Moody	Oct 85
91172	Moody	"	91183	Moody	Oct 85
91173	Moody	"	91184	Moody	Oct 85
91174	Moody	"	91185	Moody	Oct 85
91175	Moody	"	91186	Moody	Oct 85
91176	Moody	"	91187	Moody	Oct 85
91177	Moody	"	91188	Moody	Oct 85
91178	Moody	"	91189	Moody	Oct 85
91179	Moody	"	91190	Moody	Oct 85
91180	Moody	"	91191	Moody	Oct 85
91181	Moody	"	91192	Moody	Oct 85
91182	Moody	"	91193	Moody	Oct 85
91183	Moody	"	91194	Moody	Oct 85
91184	Moody	"	91195	Moody	Oct 85
91185	Moody	"	91196	Moody	Oct 85
91186	Moody	"	91197	Moody	Oct 85
91187	Moody	"	91198	Moody	Oct 85
91188	Moody	"	91199	Moody	Oct 85
91189	Moody	"	91200	Moody	Oct 85
91190	Moody	"	91201	Moody	Oct 85
91191	Moody	"	91202	Moody	Oct 85
91192	Moody	"	91203	Moody	Oct 85
91193	Moody	"	91204	Moody	Oct 85
91194	Moody	"	91205	Moody	Oct 85
91195	Moody	"	91206	Moody	Oct 85
91196	Moody	"	91207	Moody	Oct 85
91197	Moody	"	91208	Moody	Oct 85
91198	Moody	"	91209	Moody	Oct 85
91199	Moody	"	91210	Moody	Oct 85
91200	Moody	"	91211	Moody	Oct 85
91201	Moody	"	91212	Moody	Oct 85
91202	Moody	"	91213	Moody	Oct 85
91203	Moody	"	91214	Moody	Oct 85
91204	Moody	"	91215	Moody	Oct 85
91205	Moody	"	91216	Moody	Oct 85
91206	Moody	"	91217	Moody	Oct 85
91207	Moody	"	91218	Moody	Oct 85
91208	Moody	"	91219	Moody	Oct 85
91209	Moody	"	91220	Moody	Oct 85
91210	Moody	"	91221	Moody	Oct 85
91211	Moody	"	91222	Moody	Oct 85
91212	Moody	"	91223	Moody	Oct 85
91213	Moody	"	91224	Moody	Oct 85
91214	Moody	"	91225	Moody	Oct 85
91215	Moody	"	91226	Moody	Oct 85
91216	Moody	"	91227	Moody	Oct 85
91217	Moody	"	91228	Moody	Oct 85
91218	Moody	"	91229	Moody	Oct 85
91219	Moody	"	91230	Moody	Oct 85
91220	Moody	"	91231	Moody	Oct 85
91221	Moody	"	91232	Moody	Oct 85
91222	Moody	"	91233	Moody	Oct 85
91223	Moody	"	91234	Moody	Oct 85
91224	Moody	"	91235	Moody	Oct 85
91225	Moody	"	91236	Moody	Oct 85
91226	Moody	"	91237	Moody	Oct 85
91227	Moody	"	91238	Moody	Oct 85
91228	Moody	"	91239	Moody	Oct 85
91229	Moody	"	91240	Moody	Oct 85
91230	Moody	"	91241	Moody	Oct 85
91231	Moody	"	91242	Moody	Oct 85
91232	Moody	"	91243	Moody	Oct 85
91233	Moody	"	91244	Moody	Oct 85
91234	Moody	"	91245	Moody	Oct 85
91235	Moody	"	91246	Moody	Oct 85
91236	Moody	"	91247	Moody	Oct 85
91237	Moody	"	91248	Moody	Oct 85
91238	Moody	"	91249	Moody	Oct 85
91239	Moody	"	91250	Moody	Oct 85
91240	Moody	"	91251	Moody	Oct 85
91241	Moody	"	91252	Moody	Oct 85
91242	Moody	"	91253	Moody	Oct 85
91243	Moody	"	91254	Moody	Oct 85
91244	Moody	"	91255	Moody	Oct 85
91245	Moody	"	91256	Moody	Oct 85
91246	Moody	"	91257	Moody	Oct 85
91247	Moody	"	91258	Moody	Oct 85
91248	Moody	"	91259	Moody	Oct 85
91249	Moody	"	91260	Moody	Oct 85
91250	Moody	"	91261	Moody	Oct 85
91251	Moody	"	91262	Moody	Oct 85
91252	Moody	"	91263	Moody	Oct 85
91253	Moody	"	91264	Moody	Oct 85
91254	Moody	"	91265	Moody	Oct 85
91255	Moody	"	91266	Moody	Oct 85
91256	Moody	"	91267	Moody	Oct 85
91257	Moody	"	91268	Moody	Oct 85
91258	Moody	"	91269	Moody	Oct 85
91259	Moody	"	91270	Moody	Oct 85
91260	Moody	"	91271	Moody	Oct 85
91261	Moody	"	91272	Moody	Oct 85
91262	Moody	"	91273	Moody	Oct 85
91263	Moody	"	91274	Moody	Oct 85
91264	Moody	"	91275	Moody	Oct 85
91265	Moody	"	91276	Moody	Oct 85
91266	Moody	"	91277	Moody	Oct 85
91267	Moody	"	91278	Moody	Oct 85
91268	Moody	"	91279	Moody	Oct 85
91269	Moody	"	91280	Moody	Oct 85
91270	Moody	"	91281	Moody	Oct 85
91271	Moody	"	91282	Moody	Oct 85
91272	Moody	"	91283	Moody	Oct 85
91273	Moody	"	91284	Moody	Oct 85
91274	Moody	"	91285	Moody	Oct 85
91275	Moody	"	91286	Moody	Oct 85
91276	Moody	"	91287	Moody	Oct 85
91277	Moody	"	91288	Moody	Oct 85
91278	Moody	"	91289	Moody	Oct 85
91279	Moody	"	91290	Moody	Oct 85
91280	Moody	"	91291	Moody	Oct 85
91281	Moody	"	91292	Moody	Oct 85
91282	Moody	"	91293	Moody	Oct 85
91283	Moody	"	91294	Moody	Oct 85
91284	Moody	"	91295	Moody	Oct 85
91285	Moody	"	91296	Moody	Oct 85
91286	Moody	"	91297	Moody	Oct 85
91287	Moody	"	91298	Moody	Oct 85
91288	Moody	"	91299	Moody	Oct 85
91289	Moody	"	91300	Moody	Oct 85
91290	Moody	"	91301	Moody	Oct 85
91291	Moody	"	91302	Moody	Oct 85
91292	Moody	"	91303	Moody	Oct 85
91293	Moody	"	91304	Moody	Oct 85
91294	Moody	"	91305	Moody	Oct 85
91295	Moody	"	91306	Moody	Oct 85
91296	Moody	"	91307	Moody	Oct 85
91297	Moody	"	91308	Moody	Oct 85
91298	Moody	"	91309	Moody	Oct 85
91299	Moody	"	91310	Moody	Oct 85
91300	Moody	"	91311	Moody	Oct 85
91301	Moody	"	91312	Moody	Oct 85
91302	Moody	"	91313	Moody	Oct 85
91303	Moody	"	91314	Moody	Oct 85
91304	Moody	"	91315	Moody	Oct 85
91305	Moody	"	91316	Moody	Oct 85
91306	Moody	"	91317	Moody	Oct 85
91307	Moody	"	91318	Moody	Oct 85
91308	Moody	"	91319	Moody	Oct 85
91309	Moody	"	91320	Moody	Oct 85
91310	Moody	"	91321	Moody	Oct 85
91311	Moody	"	91322	Moody	Oct 85
91312	Moody	"	91323	Moody	Oct 85
91313	Moody	"	91324		

E2145	Moody	Nov 85	G1159	Removal 6/8/86	
E2146	Moody	"	G1160	Moody	Feb
E2147	X	"	G1161	Moody Y.C.A.	Feb
E2148	Moody	Dec 85	G1162	Export	Feb
E2149	Moody	"	G1163	Moody Y.C.A.	Feb
E2150	Marine Secol	4 Feb 86	G1164	Export	Mar
E2151	Moody	4 Jan 86	G1165	Moody Bay Trans	Mar
E2152	Moody	Feb & Jan 86	G1166	Export Y.C.A.	Mar
E2153	X	Jan 86	Insert G1221 → G1167	Moody	Mar
E2154	KIP	Feb 86	G1168	Export Bay Trans	Mar
E2155	Moody B.T.H.	Feb 86	G1169 23-1-86	Moody Y.C.A.	Mar
E2156	Export	Feb 86	Insert G1222 → G1170 23-1-86	Moody	Apr
E2157	Moody	Feb 86	G1171	Kip Marina	Apr
E2158	Marine Secol	Mar 86	G1172	Marine Secol Y.C.A.	Apr
E2159	Moody	Mar 86	Insert G1223 → G1173	Export	Apr
E2160	Export	Mar 86	G1174	Moody Y.C.A.	Apr
E2161	Moody	Mar 86	Insert G1224 → G1175 23-1-86	Moody Y.C.A.	Apr
E2162	Export	Mar 86	Insert G1225 → G1176	Moody	May
E2163	Moody	Mar 86	G1177	Export	May
E2164	Kip Marina	Apr 86	G1178	Export 20-1-86 Moody	May
E2165	Moody	Apr 86	G1179	Export	May
E2166	Marine Secol	Apr 86	G1180	Marine Secol	May
E2167	Moody	Apr 86	G1181	Moody	May
E2168	Export	Apr 86	G1182	Moody	Jun
E2169	Moody	Apr 86	G1183	Export	Jun
E2170	Marine Secol Export KIP	May 86	G1184	Moody	Jun
E2171	Moody Marina	May 86	G1185	Kip Marina	Jun
E2172	Kip Marina	May 86	G1186	Marine Secol	Jun
E2173	Moody	May 86	G1187	Moody	Jun
E2174	Export	May 86	G2188	Moody	Jul
E2175	Moody	May 86	G2189	Export	Jul

Taken out 26/3/86 not sold

New transom - M446

153,900

15 > 1

Moody 31
Moody 346

£ 2176	Er part	May 80	g 2190	Moody	July 80	Moody
£ 2177	Moody	Jan 80	g 2191	Moody	July 80	Moody
£ 2178	Hair Secol	Jun 80	g 2192	Moody	Jul 80	Moody
£ 2179	Moody	Jun 80	g 2193	Hair Secol	Jul 80	Moody
£ 2180	Er part	Jun 80	g 2194	Moody	Jul 80	Moody
£ 2181	Moody	Jun 80	g 2195	Er part	Jul 80	Moody
£ 2182	Er part	Jun 80	g 2196	Moody	Jul 80	Moody
£ 2183	Moody	Jul 80	g 2197	Moody	Jul 80	Moody
£ 2184	Er part	Jul 80	g 2198	Moody	Jul 80	Moody
£ 2185	Moody	Jul 80	g 2199	Moody	Jul 80	Moody
£ 2186	Moody	Jul 80	g 2200	Er part	Jul 80	Moody
£ 2187	Moody	Aug 80	g 2201	Moody	Jul 80	Moody
£ 2188	Kip Marina	Aug 80	g 2202	Kip Marina	Aug 80	Moody
£ 2189	Moody	Aug 80	g 2203	Moody	Aug 80	Moody
£ 2190	Er part	Aug 80	g 2204	Moody	Aug 80	Moody
£ 2191	Moody	Aug 80	g 2205	Moody	Aug 80	Moody
£ 2192	Moody	Sep 80	g 2206	Er part	Sep 80	Moody
£ 2193	Hair Secol	Sep 80	g 2207	Moody	Sep 80	Moody
£ 2194	Moody	Sep 80	g 2208	Hair Secol	Sep 80	Moody
£ 2195	Er part	Sep 80	g 2209	Moody	Sep 80	Moody
£ 2196	Moody	Sep 80	g 2210	Er part	Sep 80	Moody
£ 2197	Er part	Sep 80	g 2211	Moody	Sep 80	Moody
£ 2198	Moody	Oct 80	g 2212	Er part	Nov 80	Moody
£ 2199	Kip Marina	Oct 80	g 2213	Moody	Nov 80	Moody
£ 2200	Moody	Oct 80	g 2214	Hair Secol	Nov 80	Moody
£ 2201	Er part	Oct 80	g 2215	Moody	Dec 80	Moody
£ 2202	Moody	Oct 80	g 2216	Er part	Dec 80	Moody
£ 2203	Hair Secol	Oct 80	g 2217	Moody	Dec 80	Moody
£ 2204	Moody	Nov 80	g 2218	Moody	Dec 80	Moody
£ 2205	Er part	Nov 80	g 2219	Er part	Jan 80	Moody
£ 2206	Moody	Nov 80	g 2220	Er part	Jan 80	Moody

Taken out to help deliveres 26/3/80

Moody Miscel 25-80

Taken out to help deliveres 26/3/80

Taken out to help deliveres 26/3/80

Moody

Taken out to help deliveres 26/3/80

Moody

Taken out to help deliveres 26/3/80

Moody

Taken out to help deliveres 26/3/80

Moody

Taken out to help deliveres 26/3/80

Moody

These 2 no's not used. 21/1/85

NE	Yard No	Agent	Engine	Coal	Date	Bld Com'	Date	Notes
56	EQ161	MOODY	1x2003	Tim	20-2-86	3-3-86	21-3-86	✓ adders/m white checks
56	EQ162	SCHNEFFLER	1x2003	Tim	3-3-86	3-3-86	27-3-86	✓
57	EA156	Barban	1x2003	Bridge	10-3-86	3-4-86	3-4-86	✓
58	EA163	A.N.M.	1x2003	Bridge	13-3-86	9-4-86	9-4-86	✓
59	EA164	Kip	1x2003	Fin	21-3-86	17-4-86	17-4-86	✓
60	EA165	A.N.M.	1x2003	Bridge	24-3-86	18-4-86	18-4-86	✓
61	EA166	Miscel	1x2003	Bridge	1-4-86	24-4-86	24-4-86	✓
62	EA167	A.N.M.	1x2003	Bridge	7-4-86	30-4-86	30-4-86	✓
63	EA168	M.B. Scales	1x2003	Fin	11-4-86	14-5-86	14-5-86	✓
64	EA169	AHM	1x2003	Bridge	15-4-86	6-5-86	6-5-86	✓
65	EA170	Miscel	1x2003	Bridge	18-4-86	14-5-86	14-5-86	✓
66	EA171	Kip Marina	1x2003	fin	30-4-86	22-5-86	22-5-86	✓
67	EA173	AHM	1x2003	Bridge	26-4-86	21-5-86	21-5-86	✓
68	EA17a	Kip	1x2003	fin	2-5-86	10-6-86	10-6-86	✓
69	EA175	AHM	1x2003	Bridge	13-5-86	6-6-86	6-6-86	✓
70	EA176	Wood/Bldg	1x2003	Fin	19-5-86	25-6-86	25-6-86	✓
71	EA177	AHM	1x2003	Bridge	24-5-86	23-6-86	23-6-86	✓
72	EA178	Miscel	1x2003	Bridge	29-5-86	16-6-86	16-6-86	✓
73	EA179	AHM	1x2003	Fin	6-6-86	2-7-86	2-7-86	✓
74	EA181	AHM	1x2003	Bridge	9-6-86	27-6-86	27-6-86	✓
75	EA183	AHM	1x2003	Bridge	13-6-86	1-5-7-86	1-5-7-86	✓
76	EA184	Miscel	1x2003	Bridge	19-6-86	24-7-86	24-7-86	✓
77	EA185	AHM	1x2003	Bridge	30-6-86	25-7-86	25-7-86	✓
78	EA187	AHM	1x2003	Fin	8-7-86	4-8-86	4-8-86	✓
79	EA188	AHM	1x2003	Fin	14-7-86	8-8-86	8-8-86	✓
80	EA189	AHM	1x2003	Bridge	19-7-86	20-8-86	20-8-86	✓ Satin
81	EA190	Miscel	1x2003	Fin	24-7-86	13-8-86	13-8-86	✓
82	EA191	AHM	1x2003	Fin	5-8-86	12-9-86	12-9-86	✓
83	EA193	Miscel	1x2003	Fin	5-8-86	27-8-86	27-8-86	✓
84	EA19a	AHM	1x2003	Bridge	15-8-86	12-9-86	12-9-86	✓
85	EA194	AHM	1x2003	Fin	15-8-86	11-9-86	11-9-86	✓
86	EA188	Kip Marina	1x2003	Fin	2-9-86	25-9-86	25-9-86	✓

No. of No. Agent Engines keel type converted Date of Bid Date of Despatch Notes

188	E2195	Schaeffer	IX2003	Fn	2-9-86	2.10.86	✓
189	E2199	Kip Hanks	IX2003	Fn	16-9-86	14.10.86	✓
190	E2200	AHM	IX2003	Bidge	26-9-86	28.10.86	✓
191	E2198	AHM	IX2003	Bidge	26-9-86	17.10.86	✓
192	E2202	AHM	IX2003	Fn	2-10-86	24.10.86	✓
193	E2203	M/S	IX2003	Bidge	14-10-86	7.11.86	✓
194	E2204	AHM	IX2003	Fn	16-10-86	5.11.86	✓
195	E2208	AHM	IX2003	Bidge	23-10-86	13.11.86	✓
196	E2206	AHM	IX2003	Bidge	14-10-86	6.11.86	✓
197	E2215	Falcon	IX2003	Fn	29.10.86	12.1.87	✓
198	E2209	M/Sceef	IX2003	Fn	3.11.86	21.11.86	✓
199	E2216	Falcon	IX2003	Fn	5.11.86	12.1.87	✓
200	E2210	AHM	IX2003	Fn	19.11.86	16.12.86	✓
201	E2218	Falcon	IX2003	Fn	18.11.86	26.1.87	✓
202	E2217	Falcon	IX2003	Fn	24.11.86	24.1.87	✓
203	E2226	AHM	IX2003	Fn	5.12.86	14.1.87	✓
204	E2219	Falcon	IX2003	Fn	5.12.86	16.2.87	✓
205	E2220	Falcon	IX2003	Fn	6.1.87	10/2/87	✓
206	E2221	Falcon	IX2003	Fn	8.1.87	16.2.87	✓
207	E2222	Falcon	IX2003	Fn	12.1.87	6/2/87	✓
208	E2227	M/Mody	IX2003	Fn	22.1.87	14/2/87	✓
209	E2223	Falcon	IX2003	Fn	27.1.87	9.3.87	✓
210	E2228	M/Mody	IX2003	Fn	28.1.87	20.2.87	✓
211	E2224	Falcon	IX2003	Fn	4/2/87	9.3.87	✓
212	E2229	AHM	IX2003	Fn	17/2/87	18.3.87	✓
213	E2230	AHM	IX2003	Bidge	13/2/87	13.3.87	✓
214	E2225	Boutin	IX2003	Bidge	20/2/87	17.3.87	✓
215	E2231	AHM	IX2003	Bidge	2.3.87	23.3.87	✓
216	E2233	M/Sceef	IX2003	Bidge	5.3.87	27.3.87	✓
217	E2232	Kip	IX2003	Bidge	16.3.87	9.4.87	✓
218	E2234	Schaeffer	IX2003	Bidge	17.3.87	8.4.87	✓
219	E2235	AHM	IX2003	Bidge	25.3.87	14.4.87	✓
220	E2237	Schaeffer	IX2003	Fn	31.3.87	7.5.87	✓

No Yd No. Agent Engines keel type: Date Bldg Note of repair. Notes

221	E2236	AHM	1X2003	Fn	3.4.87	24/4/87	✓
222	E2277	AHM	1X2003	Fn	27.3.87	22/4/87	✓
223	E2238	Miscor	1X2003	Blige	13.4.87	11/5/87	✓
224	E2240	AHM	1X2003	Fn	21.4.87	11/5/87	✓
225	E2239	AHM	1X2003	Fn	23.4.87	22/5/87	✓
226	E2278	AHM	1X2003	Blige	29.4.87	21/5/87	✓
227	E2241	KIP	1X2003	Fn	5.5.87	28/5/87	✓
228	E2242	Miscor	1X2003	Fn	6.5.87	1/6/87	✓
229	E2243	AHM	1X2003	Blige	20.5.87	11.6.87	✓
230	E2279	Colman	1X2003	Fn	20.5.87	10.6.87	✓
231	E2244	Schaeffer	1X2003	Blige	22.5.87	23-6-87	✓
232	E2245	AHM	1X2003	Blige	1.6.87	25-6-87	✓
233	E2281	AHM	1X2003	Blige	2.6.87	18.6.87	✓
234	E2246	AHM	1X2003	Fn	9.6.87	2.7.87	✓
235	E2247	AHM	1X2003	Fn	9.6.87	2.7.87	✓
236	E2248	Miscor	1X2003	Blige	12.6.87	2-7-87	✓
237	E2249	KIP	1X2003	Fn	15.6.87	6.7.87	✓
238	E2250	HOODY	1X2003	Fn	13.6.87	13.7.87	✓
239	E2282	Schaeffer	1X2003	Fn	29.6.87	24.7.87	✓
240	E2251	AHM	1X2003	Blige	30.6.87	22/7/87	✓
241	E2252	Schaeffer	1X2003	Fn	29.6.87	22/7/87	✓
242	E2253	AHM	1X2003	Blige	7.7.87	28/7/87	✓
243	E2255	AHM	1X2003	Fn	11.7.87	17/8/87	✓
244	E2283	Miscor	1X2003	Fn	13.7.87	31/9/87	✓
245	E2254	AHM	1X2003	Blige	14.7.87	11.8.87	✓
246	E2257	C. Vaner	1X2003	Blige	28.7.87	7/9/87	✓
247	E2256	KIP	1X2003		27.7.87	19/8/87	✓
248	E2284	HOODY	1X2003	Blige	3.8.87	20.8.87	✓
249	E2259	HOODY	1X2003	Fn	11.8.87	4.9.87	✓
250	E2258	HOODY	1X2003	Fn	12.8.87	4.9.87	✓
251	E2260	Miscor	1X2003	Blige	18.8.87	10.9.87	✓
252	E2280	Defcon	1X2003	Blige	20.8.87	22.9.87	✓
253	E2261	HOODY	1X2003	Fn	24.8.87	16.9.87	✓

No	Yd. No.	Agent	Engines	Keel Type	Date Blag Comm.	Date of Despatch	Notes
254	E2285	Schaeffler	1x2003	Fin	2.9.87	25/9/87	^
255	E2286	Moody	1x2003	Fin	4.9.87	29/9/87	^
256	E2262	Moody	1x2003	Bilge	7.9.87	28/9/87	^
257	E2263	Kip	1x2003	Bilge	15.9.87	5/10/87	^
258	E2264	MISecop	1x2003	Bilge	16.9.87	7/10/87	^
259	E2265	Moody	1x2003	Bilge	18.9.87	13/10/87	^
260	E2266	Moody	1x2003	Bilge	22.9.87	14/10/87	^
261	E2287	MISecop	1x2003	Bilge	25.9.87	19/10/87	^
262	E2288	Moody	1x2003	Bilge	30.9.87	20/10/87	^
263	E2267	Moody	1x2003	Fin	5.10.87	2/11/87	^
264	E2268	Schaeffler	1x2003	Bilge	6.10.87	17/11/87	^
265	E2269	MISecop	1x2003	Bilge	8.10.87	4.11.87	^
266	E2270	Moody	1x2003	Fin	12.10.87	3.11.87	^
267	E2271	Moody	1x2003	Bilge	22.10.87	13.11.87	^
268	E2272	Moody	1x2003	Bilge	22.10.87	12.11.87	^
269	E2289	Moody	1x2003	Bilge	26.10.87	26.11.87	^
270	E2273	Kip	1x2003	Fin	30.10.87	23.11.87	^
271	E2275	Moody	1x2003	Bilge	9.11.87	30.11.87	^
272	E2274	MISecop	1x2003	Fin	10.11.87	8.12.87	^
273	E2290	Moody	1x2003	Fin	19.11.87	11.12.87	^
274	E2292	Falcon	1x2003	Fin	20.11.87	24.2.88	^
275	E2276	Moody	1x2003	Bilge	23.11.87	7.1.88	^
276	E2291	MISecop	1x2003	Fin	3.12.87	18.1.88	^
277	E2294	Moody	1x2003	Bilge	7.12.87	21.1.88	^
278	E2295	Falcon	1x2003	Fin	5.12.87	25.2.88	^
279	E2293	MISecop	1x2003	Bilge	14.12.87	2.2.88	^
280	E2298	Falcon	1x2003	Fin	9.1.88	25.2.88	^
281	E2296	Moody	1x2003	Bilge	14.1.88	27.2.88	^
282	E2304	Yrg Austria	1x2003	Fin	18.1.88	29.2.88	^
283	E2297	Moody	1x2003	Fin	25.1.88	26.2.88	^
284	E2299	Moody	1x2003	Bilge	25.1.88	9.2.88	^
285	E2301	Moody	1x2003	Fin	3.2.88	23.2.88	^
286	E2300	Kip	1x2003	Fin	3.2.88	23.2.88	^

No.	Yd. No.	Agent	Engines	Keel	Date Bldg Comm.	Date of Despatch	Notes
287	E2303	Moody	1x2003	fin	8/2/88	29.2.88	^
288	E2305	GC/MIS	1x2003	Bilge	15/2/88	3.3.88	^
289	E2306	Moody	1x2003	fin	18/2/88	14.3.88	^
290	E2302	Schaeffler	1x2003	fin	22/2/88	7.4.88	^
291	E2307	MISecol	1x2003	fin	22/2/88	7.3.88	^
292	E2308	Moody	1x2003	Bilge	26/2/88	23.3.88	^
293	E2309	Kip	1x2003	fin	9/3/88	28.3.88	^
294	E2310	Moody	1x2003	fin	11/3/88	31.3.88	^
295	E2311	Schaeffler	1x2003	Bilge	11/3/88	6.4.88	^
296	E2312	Moody	1x2003	fin	24/3/88	13.4.88	^
297	E2313	Moody	1x2003	Bilge	24/3/88	19.4.88	^
298	E2315	Moody	1x2003	fin	25/3/88	5.5.88	^
299	E2314	Schaeffler	1x2003	Bilge	29/3/88	25.4.88	^
300	E2316	MISecol	1x2003	fin	8/4/88	28.4.88	^
301	E2318	Schaeffler	1x2003	Bilge	14/4/88	4.5.88	^
302	E2317	Moody	1x2003	Bilge	21/4/88	9.5.88	^
303	E2319	Moody	1x2003	fin	21/4/88	11.5.88	^
304	E2320	Moody	1x2003	fin	25/4/88	19.5.88	^
305	E2321	Schaeffler	1x2003	Bilge	27/4/88	3.6.88	^
306	E2322	Moody	1x2003	fin	3/5/88	24.5.88	^
307	E2323	MISecol	1x2003	fin	9/5/88	1.6.88	^
308	E2324	Moody	1x2003	Bilge	12/5/88	1.6.88	^
309	E2325	Kip	1x2003	fin	12/5/88	2.6.88	^
310	E2326	Moody	1x2003	fin	23/5/88	17.6.88	^
311	E2327	Moody	1x2003	Bilge	26/5/88	16.6.88	^
312	E2329	Moody	1x2003	Bilge	31/5/88	20.6.88	^
313	E2330	MISecol	1x2003	Bilge	1/6/88	5.7.88	^
314	E2331	Moody	1x2003	Bilge	10/6/88	28.6.88	^
315	E2333	Moody	1x2003	Bilge	13/6/88	7.7.88	^
316	E2334	GC/MIS	1x2003	Bilge	22/6/88	14.7.88	^
317	E2332	C. Vanek	1x2003	Bilge	13/6/88	7.7.88	^
318	E2335	Moody's	1x2003	Bilge		19/6/88	^
319	E2337	Moody's	1x2003	Bilge		20/6/88	^

No	Yard No	Agent	Engines	Keel	Date Bldg Commenced	Date of Despatch	Notes
320	E2338	Moody	1x2003	Bilge	30/6/88	26/7/88	^
321	E2336	M/Secor	1x2003	Fin	13/7/88	2/8/88	^
322	E2339	Moody	1x2003	Bilge	14/7/88	15/8/88	^
323	E2340	Moody	1x2003	Fin	20/7/88	12/8/88	^
324	E2341	Kip	1x2003	Fin	30/7/88	23/8/88	^
325	E2345	Moody	1x2003	Bilge	1/8/88	24/8/88	^
326	E2342	Moody	1x2003	Bilge	9/8/88	2/9/88	^
327	E2344	Schaeffler	1x2003	Fin	10/8/88	2/9/88	^
328	E2343	Moody	1x2003	Fin	12/8/88	8/9/88	^
329	E2346	Schaeffler	1x2003	Bilge	22/8/88	13.9.88	^
330	E2347	Moody	1x2003	Bilge	22/8/88	28.9.88	^
331	E2348	M/Secor	1x2003	Fin	1/9/88	22.9.88	^
332	E2349	Moody	1x2003	Fin	5/9/88	20.9.88	^
333	E2351	Moody	1x2003	Bilge	14/9/88	5.10.88	^
334	E2350	C+C/M/S	1x2003	Bilge	19/9/88	17.10.88	^
335	E2352	Schaeffler	1x2003	Fin	19/9/88	7.10.88	^
336	E2353	Moody	1x2003	Fin	28/9/88	24.10.88	^
337	E2354	M/Secor	1x2003	Bilge	3/10/88	25.10.88	^
338	E2355	Moody	1x2003	Bilge	6/10/88	26.10.88	^
339	E2356	Kip	1x2003	Fin	10/10/88	27.10.88	^
340	E2357	Moody's	1x2003	Fin	14/10/88	10.11.88	^
341	E2358	Moody	1x2003	Bilge	19/10/88	10.11.88	^
342	E2359	Kip	1x2003	Bilge	20/10/88	11.11.88	^
343	E2360	Moody's	1x2003	Bilge	31/10/88	17.11.88	^
345	E2361	Moody's	1x2003	Fin	3/11/88	24.11.88	^
346	E2362	M/Secor	1x2003	Fin	3/11/88	24.11.88	^
347	E2363	Moody's	1x2003	Bilge	10/11/88	2.12.88	^
348	E2364	Moody	1x2003	Fin	17/11/88	5.12.88	^
349	E2369	Moody	1x2003	Fin	21/11/88	12.12.88	^
350	E2366	Moody	1x2003	Bilge	2/11/88	12.12.88	^
351	E2367	M/Secor	1x2003	Bilge	30/11/88	19.12.88	^
352	E2368	Moody	1x2003	Bilge	2/12/88	20.12.88	^
353	E2370	Kip	1x2003	Fin	6/12/88	23.1.89	^

No	YARD NO	AGENT	ENGINES	KEEL COMMENCED	DATE BUDS	DATE OF DESPATCH	NOTES
354	E2371	Moody's	1xV2003	Bilge	12.12.88	18.1.89	MPPGB353A98
355	E2372	M/Secor	1x2003	Fin	12.12.88	20.1.89	MPPGB354A98
356	E2373	Moody's	1x2003	Bilge	21.12.88	27.1.89	MPPGB355A98
357	E2374	Schaeffler	1x2003	Fin	10.1.89	31-1-89	(3-2-89 (May Mar)) MPPGB356A98
358	E2376	M/Secor etc	1x2003	Fin	17.1.89	7.2.89	MPPGB358B98
359	E2375	Moody's	1x2003	Bilge	17.1.89	6.2.89	MPPGB357B98
360	E2377	Moody's	1x2003	Bilge	20.1.89	16.2.89	MPPGB359B98
361	E2378	Moody's	1x2003	Fin	26.1.89	20.2.89	MPPGB360B98
362	E2379	M/Secor	1x2003	Bilge	31.1.89	1.3.89	MPPGB361B98
363	E2380	Moody's	1x2003	Fin	1.2.89	21.2.89	MPPGB362B98
364	E2382	Moody's	1x2003	Fin	6.2.89	3.3.89	MPPGB363C98
365	E2383	Kip	1x2003	Fin	13.2.89	8.3.89	MPPGB364C98
366	E2385	Schaeffler	1x2003	Bilge	20.2.89	14.3.89	MPPGB365C98
367	E2386	Moody's	1x2003	Fin	25.2.89	22.3.89	MPPGB366C98
368	E2395	Moody's	1x2003	Fin	2.3.89	31.3.89	MPPGB367B98
369	E2392	Schaeffler	1x2003	Bilge	14.3.89	6.4.89	MPPGB369D98
370	E2388	Moody	1x2003	Bilge	11.3.89	7.4.89	MPPGB368C98
371	E2391	Moody's	1x2003	Bilge	23.3.89	18.4.89	MPPGB370D98
372	E2393	Moody's	1x2003	Bilge	29.3.89	19.4.89	MPPGB371E98
373	E2394	M/Secor	1x2003	Bilge	5.4.89	24.4.89	MPPGB372E98
374	E2397	Moody's	1x2003	Bilge	10.4.89	2.5.89	MPPGB373E98
375	E2396	Moody's	1x2003	Bilge		17.5.89	MPPGB375E98
376	E2398	Moody's	1x2003	Bilge		18/6/89	MPPGB374E98
377	E2399	M/Secor	1x2003	Fin	26.4.89	22/5/89	MPPGB376E98
378	E2400	Moody's	1x2003	Bilge	6.5.89	31.5.89	MPPGB377E98
379	E2401	Moody's	1x2003	Fin	9.5.89	31.5.89	MPPGB378F98
380	E2402	Kip	1x2003	Bilge	18.5.89	12.6.89	MPPGB379F98
381	E2389	M/S etc	1x2003	Bilge	19.5.89	13.6.89	MPPGB380F98
382	E2403	Moody's	1x2003	Fin	2.6.89	2/6/89	MPPGB382G98
383	E2404	Moody's	1x2003	Fin	1.6.89	3/7/89	MPPGB381F98
384	E2406	Moody's	1x2003	Bilge	14.6.89	5/7/89	MPPGB384G98
385	E2405	Schaeffler	1x2003	Fin	14.6.89	4/7/89	MPPGB383G98
386	E2407	Moody's	1x2003	Fin	26.6.89	12.7.89	MPPGB385G98

No	Yard No	Agent	Engines	Keel	Date Bldg Comm.	Date of Despatch	H. I. N.	No
387	E2408	M/Secol	1x2003	Fin	24.6.89	19.7.89	MPPGB386G989	
388	E2409	Moody's	1x2003	Fin	4.7.89	26.7.89	MPPGB387H989	
389	E2410	Moody's	1x2003	Bidge	6.7.89	3.8.89	MPPGB388U989	
390	E2412	Moody's	1x2003	Bidge	14.7.89	10.8.89	MPPGB390J990	
391	E2414	Moody's	1x2003	Bidge		14.8.89	MPPGB391J990	
392	E2413	M/Secol	1x2003	Bidge	31.7.89	22.8.89	MPPGB392I990	
393	E2415	Moody's	1x2003	Fin	31.7.89	21.8.89	MPPGB389H990	
394	E2416	KIP	1x2003	Fin	12.8.89	14.9.89	MPPGB393J990	
395	E2417	Moody's	1x2003	Bidge	12.8.89	7.9.89	MPPGB394J990	
396	E2419	M/Secol	1x2003	Bidge	24.8.89	20.9.89	MPPGB396K990	
397	E2418	Moody's	1x2003	Fin	23.8.89	15.9.89	MPPGB395J990	
398	E2421	M/Slc+C	1x2003	Bidge	7.9.89	30.9.89	MPPGB397H990	
399	E2422	Moody's	1x2003	Fin	19.9.89	6.10.89	MPPGB399K990	
400	E2423	Tip	1x2003	Fin	20.9.89	11.10.89	MPPGB400K990	
401	E2420	Moody's	1x2003	Bidge	8.9.89	11.10.89	MPPGB398K990	
402	E2424	Moody's	1x2003	Bidge	2.10.89	25.10.89	MPPGB410L990	
403	E2425	M/Secol	1x2003	Fin	13.10.89	6.11.89	MPPGB402L990	
404	E2426	Moody's	1x2003	Fin	25.10.89	15.11.89	MPPGB403L990	
405	E2430	M/Secol	1x2003	Fin	2.11.89	23.11.89	MPPGB405M990	
406	E2428	Moody's	1x2003	Bidge	9.11.89	5.12.89	MPPGB405M990	Earls Court Boat Show
407	E2429	Moody's	1x2003	Bidge	13.11.89	1.12.89	MPPGB406M990	
408	E2431	Moody's	1x2003	Bidge	21.11.89	6.12.89	MPPGB407M990	
409	E2432	Moody's	1x2003	Fin	23.11.89	15.12.89	MPPGB408A990	
410	E2433	Moody	1xV2003	Bidge	29.11.89	20.12.89	MPPGB410A990	
411	E2434	M/Secol	1xV2003	Bidge	7.12.89	12.1.90	MPPGB411A090	
412	E2435	Moody	1xV2003	Fin	11.12.89	15.1.90	MPPGB409A090	
413	E2437	Moody	1xV2003	Bidge	8.1.90	30.1.90	MPPGB413A090	
414	E2436	Kip	1xV2003	Fin	19.12.89	7.2.90	MPPGB412A090	
415	E2438	Kip	1xV2003	Fin	20.1.90	8.2.90	MPPGB415B090	
416	E2427	Cling yts	1xV2003	Fin	15.01.90	19.2.90	MPPGB414B090	
417	E2439	Moody	1xV2003	Fin	24.01.90	13.2.90	MPPGB416B090	
418	E2440	M/Secol	1xV2003	Fin	01.02.90	22.2.90	MPPGB417B090	
419	E2444	Moody	1xV2003	Bidge	14.2.90	8.3.90	MPPGB420C090	

No.	Yard No	Agent	Engine	Keel	Date Bldg Comm	Date of Despatch	H. I. N.
420	E2443	Moody	1xV2003	Fin	13-2-90	2-3-90	MPPGB419C090
421	E2441	Moody	1xV2003	Bilge	5-2-90	23-2-90	MPPGB418B090
422	E2445	M/Secol	1xV2003	Bilge	22-2-90	20-3-90	MPPGB421C090
423	E2446	Moody	1xV2003	Fin	27-2-90	28-3-90	MPPGB422C090
424	E2449	Oy	V2003+1	Fin	16-3-90	13-6-90	MPPGB425C090
425	E2447	Schreffler	1xV2003	Fin	6-3-90	28-3-90	MPPGB423C090
426	E2448	Moody	1xV2003	Bilge	09-3-90	6-4-90	MPPGB424C090
427	E2450	Moody	1xV2003	Bilge	23-3-90	11-4-90	MPPGB426D090
428	E2451	M/Secol	1xV2003	Bilge	28-3-90	23-4-90	MPPGB427D090
429	E2453	CFC	1xV2003	Bilge	5-4-90	27-4-90	MPPGB429B090
430	E2452	Moody	1xV2003	Bilge	5-4-90	30-4-90	MPPGB428D090
431	E2454	Moody M	Vx2003	Fin	18-4-90	8-5-90	MPPGB430D090
432	E2442	Oy Contact	1xV2003	Fin	20-4-90	13-6-90	MPPGB431E090
433	E2456	M/Secol	1xV2003	Fin	14-5-90	31-5-90	MPPGB433E090
434	E2455	Moody M	1xV2003	Fin	27-4-90	18-5-90	MPPGB432E090
435	E2457	Moody M	1xV2003	Bilge	8-5-90	30-5-90	MPPGB434E090
436	E2460	C&C	1xV2003	Fin	17-5-90	25-6-90	MPPGB435E090
437	E2459	Moody	1xV2003	Fin	21-5-90	8-6-90	MPPGB436F090
438	E2461	Moody	1xV2003	Bilge	1-6-90	4-7-90	MPPGB437F090
439	E2462	M/Secol	1xV2003	Bilge	14-6-90	23-7-90	MPPGB439G090
440	E2463	Moody	1xV2003	Bilge	18-6-90	5-7-90	MPPGB438F090 Palma Boat Shop
441	E2464	Kip Marina	1xV2003	Fin	27-6-90	19-7-90	MPPGB440G090
442	E2466	Sportmex	1xV2003	Fin	9-7-90	13-8-90	MPPGB442G090
443	E2465	Moody	1xV2003	Bilge	11-7-90	9-8-90	MPPGB441G090 Southampton BIS
444	E2471	Moody	1xV2003	Bilge	24-7-90	24-8-90	444H091
445	E2468	Moody	Vx2003	Bilge	2-8-90	4-9-90	MPPGB443G090
446	E2470	Moody	Vx2003	Fin	24-8-90	24-9-90	MPPGB445J091
447	E2472	Moody	Vx2003	Bilge	14-9-90	16-10-90	MPPGB446J091
448	E2475	Moody	1xV2003	Fin	5-10-90	7-11-90	MPPGB447J091
449	E2477	Moody	V2003	Bilge	30/10/90	27-11-90	MPPGB448J091 London Boat Shop
450	E2480	Moody	V2003	Bilge	12-11-90	10-12-90	450M091
451	E2478	Moody	V2003	Fin	4/12/90	22-1-91	449J091
452	E2481	Moody	V2003	Fin	10-1-91	13-2-91	451M091

No	Yard No	Agent	Enquiries	Keel	Date Bldg Comm	Date of Dispatch	HW Identical Number
453	E2482	Moody	V2003	Bidge	6-2-91	8-3-91	452A191
454	E2492	Moody	V2003	Fin	22-2-91	22-3-91	453B191
455	E2523	Moody	V2003	Fin	8-3-91	5-4-91	454C191
456	E2524	Moody	V2003	Fin	26-3-91	29-4-91	455D191
457	E2525	Kip	V2003	Fin	12-4-91	16-5-91	456E191
458	E2526	Moody	V2003	Bidge	1-5-91	8-7-91	457D191
459	E2527	C/Vank	1xV2003	Bidge	20-5-91	26-6-91	458F191
460	E2528	Kip	1xV2003	Fin	18-6-91	18-7-91	459G191
461							
462							
463							
464							
465							
466							
467							
468							
469							
470							
471							
472							
473							
474							
475							
476							
477							
478							
479							
480							
481							
482							
483							
484							
485							

A truly fast cruising yacht, the Moody 31's sleek good looks belie her amazingly spacious accommodation.

High on designer Bill Dixon's priorities were sailing performance, comfort, durability, strength and stability, plus those indefinable qualities – style and aesthetic appeal.

All these have been most skilfully achieved – her good stability and effortless handling owe much to the high ballast ratio and generous beam. Her good sail area/displacement ratio, high prismatic coefficient and long waterline ensure high average cruising speeds are achievable in virtually any wind condition. The latest Volvo 3 cylinder 28hp diesel provides a smooth and effortless high performance under power.

Thoughtful attention to interior design provides generous and stylish living quarters with both fore and aft cabins being completely private from the main saloon. There is ample hanging and stowage space, a well-appointed galley and chart area, spacious toilet facilities, and comfortable cabins finished with double or single berths.

The winches, deck fittings, etc are the right size to do the job, there is a substantial alloy toerail and items like echo sounder, fire extinguishers and warps are all standard equipment. Design and construction are approved by Lloyds and each boat has a Lloyds Hull Construction Certificate.

The Moody 31 continues the long tradition of Moody excellence, incorporating the latest concepts in yacht design whilst giving the owner a true investment in terms of value, safety, comfort and performance.

DECK & HULL. In white GRP to Lloyds specification – each Moody 31 carries a Lloyds Hull Release Note. The deck is also in white with integral non-slip surfaces moulded in. The standard steering arrangement is tiller, and the rudder which is semi-balanced is strongly supported by a partial skeg. (Wheel steering is available as an optional extra. If this option is chosen an emergency tiller is supplied). The standard paintwork covers the topstrake and boottopping in navy and grey with navy antifouling. The transom now incorporates a Swimming Platform.

FORE PEAK. Chain locker.

FORECABIN. Two single berths are fitted in a 'V' piece formation which can easily be converted to a double if required at small additional cost. A hanging locker is provided to port with a dressing table and lockers to starboard. Further stowage is allowed for both below the berths and by the fitting of the cave lockers to the ship's sides. The floor area has fitted carpets and the furniture units are made of teak. A deck hatch with ventilator is fitted for extra light, ventilation and emergency exit.

SALOON. Two bench settee berths are fitted – one to port one to starboard with a large fixed table with fold-out leaves fitted centrally. A locker is fitted into the centre section of the table. There is stowage behind the settees and also to the ship's sides. Carpets are fitted as standard to the floor area although a teak and holly flooring can be fitted if preferred at additional cost.

CHART AREA to port with chart table and stowage. Navigator's stool. Ample space is allowed for navigation books and instruments, and a flexible chart light is supplied. Also in the chart area is the boat's electric switch panel (utilising circuit breakers with battery voltmeter) and the 4-way change over switch for the batteries.

GALLEY. To starboard and is fully fitted with a gimballed gas cooker with 2 burners, oven, grill and crash bar. A foldaway cover is provided for the cooker. Also provided is a draining icebox and stainless steel sink with manual cold water pump. (H & C pressurised water system is available as an optional extra). Ample stowage is provided for crockery, cutlery and food. Overhead lighting is fitted. The galley is fitted out in teak with wipe clean laminated work surfaces.

AFT CABIN is immediately aft of the galley and is amazingly spacious for a boat of this size. Two single berths are fitted in 'V' formation and a double berth conversion is supplied as standard. A good sized hanging wardrobe is fitted against the ship's sides. As with all the other areas in the Moody 31, lighting and ventilation is fitted overhead, with the furniture units in teak and carpets to the floor areas. There are two opening ports to cockpit for light and ventilation.

TOILET COMPARTMENT is to port immediately aft of the navigation area, and fully fitted with marine WC, towel rail, tooth brush and mug holder, lavatory paper holder, mirror, overhead lighting and ventilation. A teak grating is fitted to the floor area (a shower can be fitted in

conjunction with H & C pressurised water system as an optional extra) and an oilskin locker is also provided. This compartment is fitted out in wipe clean laminates.

COCKPIT. Seating is provided to port and starboard and is protected by high coamings upon which the sheet winches are fitted. The mainsheet track is fitted to a bridge deck at the companionway over which is a console to take navigational instruments. To port is a large cockpit locker and separate drained gas locker large enough for two bottles. Equipment fitted in the cockpit includes the standard engine instrumentation, engine controls, stainless steel grab handles, winch handle pocket and bulkhead mounted compass.

ENGINE which is accessible from both the aft cabin and from behind the companionway steps is a Volvo 2003 28hp 3 cyl diesel with 2.34:1 reduction. Shaft is in stainless steel, with a fixed two bladed propeller. Also supplied is a remote stern gland greaser and sight glass to the fuel tank.

ELECTRICAL. A 50 amp alternator on the engine charges two 95 amp hour heavy duty batteries with a four way change over switch. Electrical lighting is supplied to all areas of the interior with port/starboard, steaming, stern and deck navigation lights are fitted. Cathodic protection is given by a hull mounted sacrificial anode.

DECK FITTINGS. Stemhead fitting with chain roller, pulpit, anodised aluminium toe rail, stanchions and sockets, guard rails, pushpit, chain plates, four mooring cleats with fairleads, 2 two speed genoa sheet winches with cleats, main sheet traveller with jamming block, 2 genoa tracks with sliders, blocks and turning blocks, handrails to coachroof, ventilators to each cabin, forehatch, deck hatch to chain locker, fuel and water fillers.

SPARS. In silver anodised aluminium and comprising mast with main and foresail halyard winches and cleats, spinnaker track, pad for spinnaker winch, boom with slab reefing system including winch, 3 reefing eyes and jammers.

RIGGING. Standing rigging is 1 x 19 stainless steel wire with running rigging in terylene comprising fore and main halyards, topping lift, burgee halyard, 1 signal halyard.

SAILS. Mainsail with three rows of reef points and a working jib, both from a well known sailmaker and complete with tacks, hanks and bags. Mainsail coat.

GENERAL EQUIPMENT. Compass, echo sounder with alarm, anchor with 15 fathoms chain, diaphragm bilge pump, 2 dry powder fire extinguishers, warps, ensign socket, transom boarding rung and inset bathing platform.

The above specification is intended to fairly represent the Moody 31.

However, the right to amend this specification without notice is reserved.



MARINE PROJECTS

COMPLETE BOAT LIST FOR MOODY 31 AS FROM 1ST JAN, 1987

Delivery to No. 1 Store, Valley Road.

<u>Our Ref:</u>	<u>M.P. Ref:</u>	<u>Description</u>	<u>Price</u>
ASIT 098	H 710 015	1" dia S.S. Shaft x 52" OAL & fit F.I. Volvo Coupling. Bearing Spread:- 145 $\frac{3}{4}$ " - D.E.B.	£40.15
AST 0279	D510 165	1" G.R.P. Sterntube x 16" OAL	£31.79
APIG 100	D510 202	1" Glass In 'P' Bracket x 15" lg. Cast in HTB1	£33.22
MSR 0644	H786 020	1 $\frac{1}{2}$ " dia Rudder x 73 $\frac{1}{2}$ " OAL c/w Tangs	£160.90
ASR 0637	D512 648	1 $\frac{1}{2}$ " Rudder Heel Bearing. Cast in HTB1	£91.29
MSR 0642	D512 700	Top Bearing Housing. Cast in HTB1.	£71.04
MSR 0639	D512 655	X 1 $\frac{1}{2}$ " Polyacetal Bearing fit to MSR 0639	£11.38
ASR 0599	D512 699	Tiller Head. Cast in HTB1	£47.15
MSR 0641	D512 627	1 $\frac{1}{2}$ " G.R.P. Bottom Bearing.	£37.65
AWIS 075	D615 855	3" Strainer Body	£11.79
AEIK 175	D511 280	Remote Greaser Kit	£12.98
MSF 0666	G914 110	Bow Roller	£6.24

PROPELLERS:

VOVLO 2003 - 28 SHP @ 3200 RPM THRU MS2B G/BOX @ 2.4:1 R.R.

MOIT 164	D510 435	16" dia x 14" pitch x 2 blade L.H. Fixed Turbine Propeller. Cast in HTB1. To fit 1" shaft dia.	£56.17
----------	----------	--	--------

OPTIONAL:

AOIF 162		16" dia x 12" pitch x 2 blade L.H. FOLDING Propeller. Cast in AB2. Other details as above.	£171.60
----------	--	--	---------

MOIT 162	D510 430	16" dia x 12" pitch x 3 blade Turbine Propeller. L.H. Other details as above.	£79.90
----------	----------	---	--------

MARINE PROJECTS

COMPLETE BOAT LIST FOR MOODY 31 AS FROM 1ST JAN 1986

Delivery to No: 1 Store, Valley Road.

<u>Our Ref</u>	<u>M.P. Ref</u>	<u>Description</u>	<u>Price</u>
ASIT098	H510 609	1" Dia. S.S. Shaft x 52" OAL & fit F/I Volvo Coupling. Bearing Spread:- T-45 $\frac{3}{4}$ " - D.F.B.	£38.61
AST 0279	D510 165	1" GRP Sterntube x 16" OAL.	£30.57
APIG100	D510 202	1" Glass-In 'P' Brkt cast in HTB1 x 15" Long.	£31.94
MSR 0634	D512 698	1 $\frac{1}{2}$ " Top Rudder Bar x 36" OAL.	£119.40
MSR 0635	D512 698	1 $\frac{1}{2}$ " Bottom Rudder Bar x 35" OAL.	£109.59
MSR 0636	D512 706	Muff Coupling.	£36.17
ASR 0637	D512 640	1 $\frac{1}{2}$ " Rudder Heel Bearing cast in HTB1.	£87.78
MSR 0638	D512 654	Top Bearing Housing cast in HTB1.	£68.31
MSR 0639	D512 654	1 $\frac{1}{2}$ " Polyacetal Bearing Fit to MSR390/4.	£10.94
MSR 0640	D512 706	Tiller Head cast in HTB1.	£56.71
MSR 0641	D512 656	1 $\frac{1}{2}$ " GRP Bottom Bearing.	£36.20
AWIS075	D615 855	3" Strainer Body - 1 off required.	£11.34
AEIK175	D511 280	Remote Greaser Kit-1 off required.	£12.48
MSF 0153	G405 000	Bow Roller - 1 off required.	£3.89
<u>PROPELLER</u>	D510 435	16" Dia x 14" Pitch x 2 Blade L.H. Fixed Turbine Propeller. Cast in HTB1. Volvo 2003 - 28 shp @ 3,200 rpm through MS2B gearbox at 2.4 to 1 reduction.	£54.01
MOIT 164			
AOIF 162		16" dia x 12" pitch x 2 blade L.H. FOLDING Propeller. Cast in AB2. Engine/Gearbox - as above.	£165.00

COMPLETE BOAT LIST FOR MOODY 31 / VOLVO 2003 28SHp/3200/2.4:1

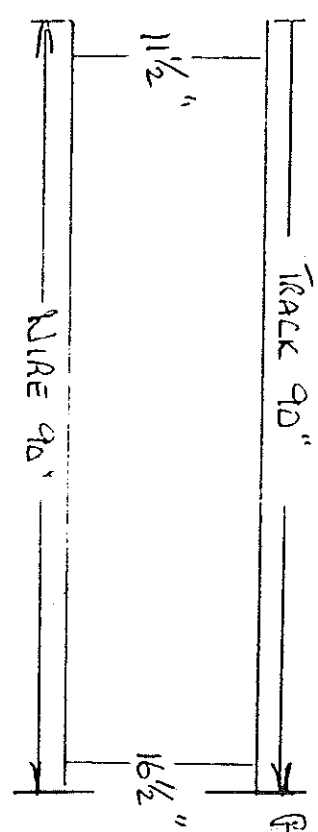
DELIVERY TO NO. 1 STORE, VALLEY ROAD

T.P. REF	M.P. REF:	DESCRIPTION	1988	PRICE
ASIT098	H710 015	1" DIA S.S. SHAFT X 52" OAL & FIT F.I. VOLVO CPLG. BEARING SPREAD: 145.75 - DEB	42	49.90
AST0279	D510 165	1" GRP STERN TUBE X 16" OAL	33	29.00
APIG100	D510 202	1" GLASS IN P. BRACKET X 15" LG CAST IN HTB1	35	38.30
MSR0644	H786 020	1.50" DIA RUDDER X 73.5 OAL C/W TANGS. CAST IN HTB1	169	164.00
ASR0637	D512 648	1.50" RUDDER HEEL BEARING CAST IN HTB1	69	56.30
MSR0642	D512 700	TOP BEARING HOUSING. CAST IN HTB1	33	22.60
MSR0639	D512 655	1.5 POLYACETAL BEARING.	5	2.90
ASR0599	D512 699	TILLER HEAD. CAST IN HTB1.	44	35.50
MSR0641	D512 627	1.5 GRP BOTTOM BEARING.	34	28.30
AMIS075	D615 855	3/4" STRAINER BODY	12	13.00
AEIK175	D511 280	REMOTE GREASER KIT	14	14.40
MSF0166	G914 110	BOW ROLLER	7	6.90
Pp0405*	D510 435	16" DIA X 14" X 2 BLADE L.H. FIXED TURBINE PROPELLER. CAST IN HTB1.	59	63.00
OPTIONAL:				
=====				
		16" DIA X 12" X 2 BLADE L.H. AQUASTREAM (FOLDING) PROPELLER. CAST IN AB2.		190.00
Pp0758	D510 430	16" DIA X 12" X 3 BLADE L.H. PROPELLER. CAST IN HTB1.		65.00

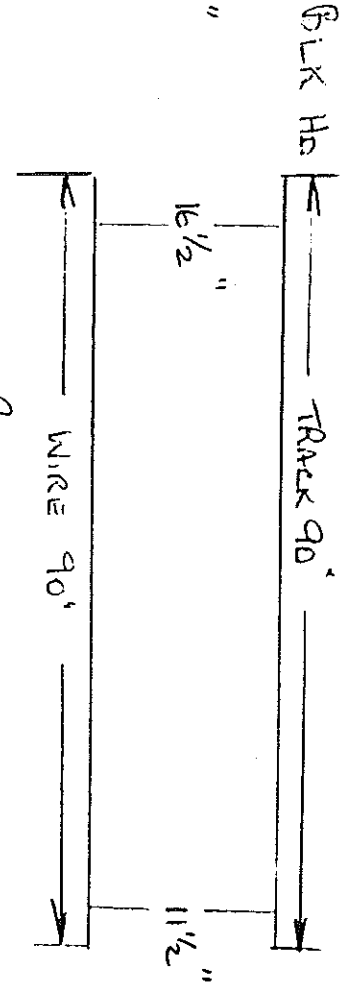
MOODY 3

TRACES & WIRES

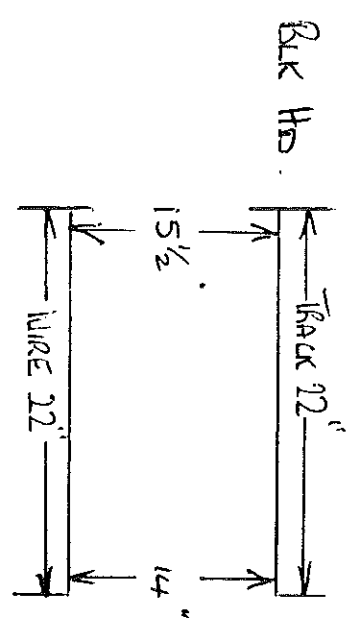
5-2-86



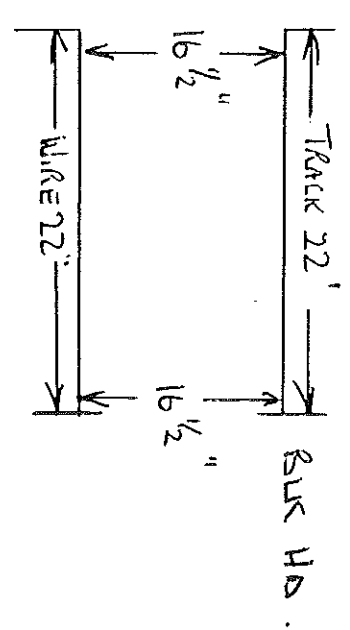
STBD SIDE SALOON



PORT SIDE SALOON



AFT OF SALOON STBD SIDE

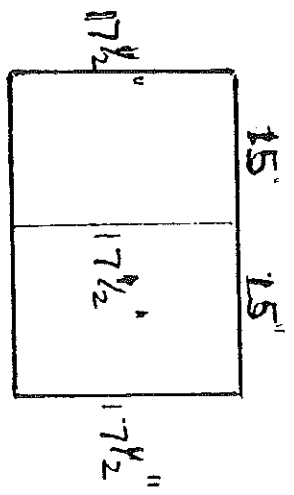


TOILET PORTSIDE

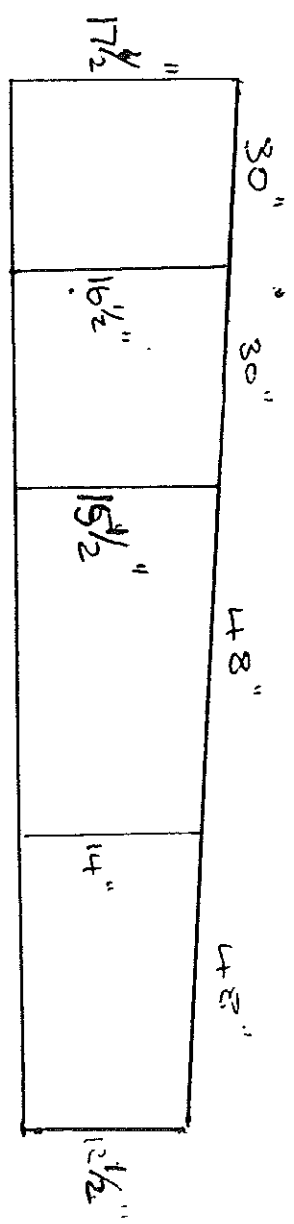
MOODY 31

ALL CURTAINS FINISHED SIZES [INCLUDING GATHERING]

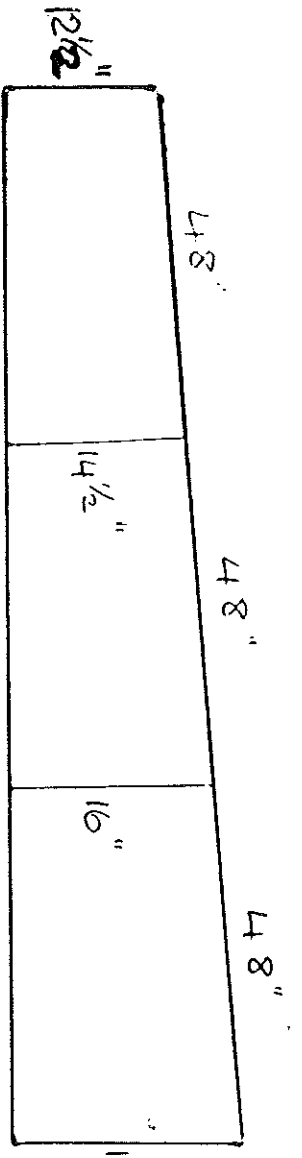
TAPE ON VERY TOP. WIRE BOTTOM



PORT TOILET

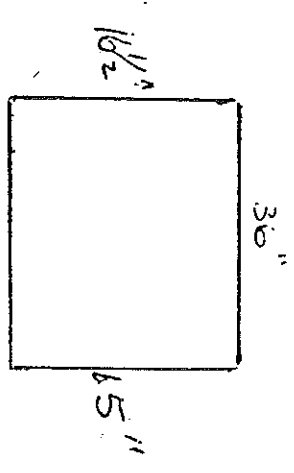


PORT SALOON

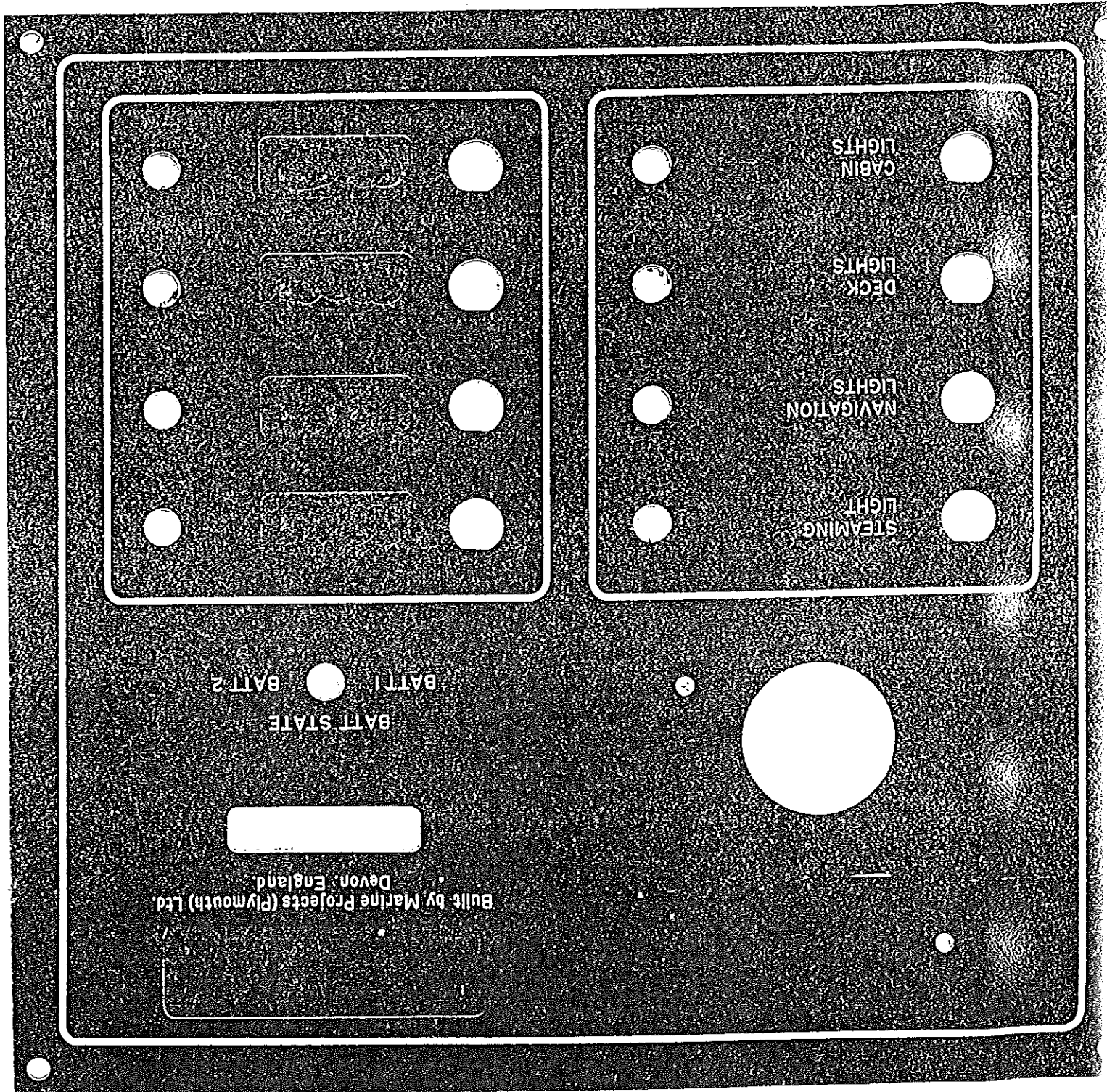


STARBOARD

SALOON



STARBOARD SIDE AFT OF SALOON



DESCRIPTION. ELEC PNL 12V 8 WAY SIG/MOODY

Pt No. BLANK 571810

LT NO. 455000

DRWG NO. 1000

STAY	QTY PER SET	TOP END FITTING	BOTTOM END FITTING	OVERALL LENGTH (M)
FORESTAY	1	Eye swaged	Rigging screw	14.00
INNER FORESTAY	0	-	-	0
CAP SHROUD	2	Shroud	Rigging screw and roller	12.62
INTERMEDIATE	2	Shroud	Rigging screw and roller	9.025
FORWARD LOWER	2	Shroud	Rigging screw and roller	5.00
AFT LOWER	2	Shroud	Rigging screw and roller	5.00
BACKSTAY	1	Eye terminal	Rigging screw	14.50

Moody 336

STAY	QTY PER SET	TOP END FITTING	BOTTOM END FITTING	OVERALL LENGTH (M)
FORESTAY	1	Eye swaged	Fork	12.23
INNER FORESTAY	1	Tee	Rigging screw and roller	5.875
CAP SHROUD	2	Tee	Rigging screw and roller	11.51
INTERMEDIATE	0	Eye swaged, eye taurit and tee	Rigging screw, swagless and roller	0
FORWARD LOWER	0	Eye swaged, eye taurit and tee	Rigging screw, swagless and roller	0
AFT LOWER	2	Tee	Rigging screw and roller	6.115
BACKSTAY	1	Eye swaged	Rigging screw	12.64
BACKSTAY SPAN	0	Eye swaged, eye taurit and tee	Rigging screw, eye, fork and swagless	0

Moody 31

ISSUED	DESCRIPTION	UNITS OF ISSUE
	M31 PULPIT	1
	M31 PUSHPIT	1
	M31 CHAIN PLATE SET	1SET
	M31 HATCH RETAINERS & GRAB HANDLES	1SET
	M31 STEMHEAD ROLLER	1
	M31 MIXER BOX Issued with Engineers kit	1
	M31 BATTERY STRAPS Issued with Engineers kit	2
	M31 TRANSONM BEADING NO. 4	1SET
	M31 PLASTIMO COODER COODER GIMBAL STOPS	1SET2
	M31 GIMBALS SINGLE SLOTTED	1SET2
	M31 COOKER BAR	1
	M31 COOKER FIDDLE CLAMP	1
	M31 MAST POST	1
	M31 OVERHANG LOCKER BAR AS M34	1
	M31 SPRAYHOOPS & FEET (OPTIONAL)	1set

MODEL OF BOAT MOODY 31

BOAT NO

DATE

CREW

SIGNED

ISSUED	D E S C R I P T I O N	UNITS OF ISSUE
	BOARDING LADDER (OPTIONAL)	1
	BOARDING LADDER GRAB HANDLE	1
	BUNK BARS <i>28 1/4" x 1 1/2"</i>	8
	HATCH BACK PLATES (4 REQUIRED IF OPTIONAL MATCH REQUIRED)	2
	24" HANGING BAR	1
	MAIN CABIN HATCH BACKING PLATES (OPTIONAL)	2
	WASHBOARD RETAINERS ASS33	1
	HATCH BACK PLATES (OPTIONAL)	2
	FUEL TANK	1
	M31 HOLDING TAND (OPTIONAL)	1

MODEL OF BOAT

BOAT NO

DATE

CREW

SIGNED

M O O D Y 2 8

M O O D Y 3 1

M O O D Y 3 4

M O O D Y 3 7

M O O D Y 4 2 2

M O O D Y 4 2 2

MOORING WARPS

FENDERS

MAINSHEET

GENOA SHEETS

2

2

1

2

15m x 12mm

18" x 5 1/2"

Star No. 1 W/B

2 x 2m Lanyard

14.00m

10mm B. on B. (White)

11.0m

10mm B. on B. (Blue)

30.85

9.04

6.68

8.93

D252110

24.17

39.89

15m x 12mm

18" x 5 1/2"

Star No. 1 W/B

2 x 2m Lanyard

23.0m

10mm B. on B. (White)

14.0m

12mm B. on B. (Blue)

44.40

9.04

10.02

10.10

D252120

25.34

44.40

MOORING WARPS

FENDERS

MAINSHEET

GENOA SHEET

2

2

1

2

15m x 16mm

22" x 7"

Star No. 2 W/B

2m Lanyard

29.0m

10mm B. on B. (White)

15.5m

12mm B. on B. (Blue)

65.45

22.98

13.17

12.42

D252010

22.98

65.45

MOORING WARPS

FENDERS

MAINSHEET

GENOA SHEETS

3

3

1

2

15m x 16mm

32" x 10"

Star No. 4 W/B

2m Lanyard

35.5m

12mm B. on B. (White)

16.5m

14mm B. on B. (Blue)

20.49

22.98

21.66

25.90

D204489

21.66

20.49

MOORING WARPS

FENDERS

MAINSHEET

GENOA SHEETS

3

3

1

2

15m x 16mm

32" x 10"

Star No. 4 W/B

2m Lanyard

35.5m

12mm B. on B. (White)

16.5m

14mm B. on B. (Blue)

25.90

22.98

21.66

25.90

D252140

21.66

20.49

MOORING WARPS

FENDERS

MAINSHEET

GENOA SHEETS

3

3

1

2

15m x 16mm

32" x 10"

Star No. 4 W/B

2m Lanyard

35.5m

12mm B. on B. (White)

16.5m

14mm B. on B. (Blue)

25.90

22.98

21.66

25.90

D252140

21.66

20.49

MOORING WARPS

FENDERS

MAINSHEET

TRAVELLER

CONTROL LINE

1

1

2

1

15m x 16mm

32" x 10"

Star No. 4 W/B

2m Lanyard

35.5m

12mm B. on B. (White)

16.5m

14mm B. on B. (Blue)

25.90

22.98

21.66

25.90

D204489

21.66

20.49

MOORING WARPS

FENDERS

MAINSHEET

TRAVELLER

CONTROL LINE

1

1

2

1

15m x 16mm

32" x 10"

Star No. 4 W/B

2m Lanyard

35.5m

12mm B. on B. (White)

16.5m

14mm B. on B. (Blue)

25.90

22.98

21.66

25.90

D204489

21.66

20.49

MOORING WARPS

FENDERS

MAINSHEET

TRAVELLER

CONTROL LINE

1

1

2

1

15m x 16mm

32" x 10"

Star No. 4 W/B

2m Lanyard

35.5m

12mm B. on B. (White)

16.5m

14mm B. on B. (Blue)

25.90

22.98

21.66

25.90

D204489

21.66

20.49

MOORING WARPS

FENDERS

MAINSHEET

TRAVELLER

CONTROL LINE

1

1

2

1

15m x 16mm

32" x 10"

Star No. 4 W/B

2m Lanyard

35.5m

12mm B. on B. (White)

16.5m

14mm B. on B. (Blue)

25.90

22.98

21.66

25.90

D204489

21.66

20.49

MOORING WARPS

FENDERS

MAINSHEET

TRAVELLER

CONTROL LINE

1

1

2

1

15m x 16mm

32" x 10"

Star No. 4 W/B

2m Lanyard

35.5m

12mm B. on B. (White)

16.5m

14mm B. on B. (Blue)

25.90

22.98

21.66

25.90

D204489

21.66

20.49

MOORING WARPS

FENDERS

MAINSHEET

TRAVELLER

CONTROL LINE

1

1

2

1

15m x 16mm

32" x 10"

Star No. 4 W/B

2m Lanyard

35.5m

12mm B. on B. (White)

16.5m

14mm B. on B. (Blue)

25.90

22.98

21.66

25.90

D204489

21.66

20.49

MOORING WARPS

FENDERS

MAINSHEET

TRAVELLER

CONTROL LINE

1

1

2

1

15m x 16mm

32" x 10"

Star No. 4 W/B

2m Lanyard

35.5m

12mm B. on B. (White)

16.5m

14mm B. on B. (Blue)

25.90

22.98

21.66

25.90

D204489

21.66

20.49

MOORING WARPS

FENDERS

MAINSHEET

TRAVELLER

CONTROL LINE

1

1

2

1

15m x 16mm

32" x 10"

Star No. 4 W/B

2m Lanyard

35.5m

12mm B. on B. (White)

16.5m

~~M O O D Y 2 8~~

MOORING WARPS	2	15m x 12m	9.04	D252001
FENDERS	2	18" x 5 1/2"	6.68	D204491
		Star No. 1 W/B		
		2 x 2m Lanyards		
MAINSHEET	1	14.00m	6.59)
		10mm B. on B. (White)) D252100
GENOA SHEETS	2	11.0m	8.54) 15.13
		10mm B. on B. (Blue))
			<u>30.85</u>	

M O O D Y 3 1

MOORING WARPS	2	15m x 12mm	9.04	
FENDERS	2	18" x 5 1/2"	6.68	
		Star No. 1 W/B		
		2 x 2m Lanyard		
MAINSHEET	1	20.0m	8.93)
		10mm B. on B. (White)) D252110
<i>Genoa sheet</i>	2	14.0m	15.24) 24.17
		12mm B. on B. (Blue))
			<u>39.89</u>	

M O O D Y 3 4

MOORING WARPS	2	15m x 12mm	9.04	
FENDERS	3	18" X 5 1/2"	10.02	
		Star No. 1 W/B		
		2 x 2m Lanyard		
MAINSHEET	1	23.0m	10.10)
		10mm B. on B. (White)) D252120
GENOA SHEET	2	14.0m	15.24) 25.34
		12mm B. on B. (Blue))
			<u>44.40</u>	

M O O D Y 3 7

MOORING WARPS	3	15m x 16mm	22.98	D252010
FENDERS	3	22" x 7"	13.17	D204480
		Star No. 2 W/B		
		2m Lanyard		
MAINSHEET	1	29.0m	12.42)
		10mm B. on B. (White)) D252130
GENOA SHEETS	2	15.5m	16.88) 29.30
		12mm B. on B. (Blue))
			<u>65.45</u>	

M O O D Y 4 2 2

MOORING WARPS	3	15m x 16mm	22.98	
FENDERS	3	32" X 10"	21.66	D204489
		Star No. 4 W/B		
		2m Lanyard		
MAINSHEET	1	35.5m	20.49)
		12mm B. on B. (White))
GENOA SHEETS	2	16.5m	25.90) D252140
		14mm B. on B. (Blue)) 51.42
TRAVELLER	1	7.0m	5.03)
CONTROL LINE		10mm B. on B.)
		Eye Each End)
			<u>96.06</u>	

Part Lights

Moody 31

Venus PT100 10" x 4" Cost £23.00 D204764

Moody 3410

Lawman 8902 10" x 4" Cost £20.44 D204752

Moody 3710

Lawman 8902 10" x 4" Cost £20.44 D204752

Moody 422

Lawman 8912 12" x 5" Cost £24.48 D204762

... U25 8940

Eclipse 33

Lawman 8902 10" x 4" Cost £20.44 D204752

moody 27
15x11x2
15x10x3

XM
279

STANDARD ITEMS ON MOODY AND SIGMA

ITEMS:	MOODY 28	MOODY 31	MOODY 34	MOODY 37
<u>FENDERS</u>	2	2	3	3
<u>SIZE AND NUMBER</u>	18x5½ D204491 XM Yachting	18x5½ D204491 XM Yachting	18x5½ D204491 XM Yachting	22x7 D204480 XM Yachting
<u>ANCHOR WEIGHT AND TYPE</u>	25lb Plough D203511	25lb Plough D203511	35lb Plough D203520	35lb Plough D203520
<u>ANCHOR WINCH AND TYPE</u>	NONE	NONE	NONE	Lofrans Royal
<u>ANCHOR WARP WITH STD WINCH</u>	15FTM (28m) 5/16 Non Cali Chain D203930	15FTM (28m) of 5/16 Non Cali Chain D203930	15FTM (28m) of 5/16 Cali Chain D203930	15FTM (28m) of 5/16 Cali Chain D203930
<u>CALOR GAS BOTTLES (1 PER BOAT) EXPORT:</u>			1 10lb D203711	1 10lb D203711
<u>FRIDGE TYPE:</u>	NONE	NONE	NONE	160 Litre Danfos H205196
<u>MOORING WARP:</u>	2 XM Yachting 15mx12mm D252001	2 15mx12mm	2 15mx12mm	3 XM Yachting 15mx16mm D252010
<u>COOKERS:</u>	Atlantic Budget D203753	Atlantic Budget D203753	Atlantic Budget D203753	Atlantic de Luxe H203757
<u>PROPELLOR SIZES:</u>	15x11x2 blade LH D520427	16x14x2 blade LH D510435 Tein	15x12½x2 blade RH D510418 Tein	T90 engine 16x11 D510429 T108 engine 17x11 D510464
<u>ANTIFOULING:</u>		C.O.P.O.L.Y.M.E.R N A V Y B L U E		
<u>ECHO SOUNDER:</u>	Navico ES 120 D310100	Navico ES 120 D310100	Navico ES120 D310100	Navico ES120 D310100
<u>SUNLOG:</u>	NONE	NONE	12v x 12k Sunlog H512910 New 1	12v x 12k Sunlog H512910 New 1 376
<u>STERN LIGHTS:</u>	AQ 25 D3088143	AQ 25 D308843	AQ 25 D308843	AQ 40 D308773
<u>STD WINCHES:</u>	2 24C Lewmar	2 30C	2 40C	2 43C

Vauo 2003 TURBO 18x14 2 BLADE.
1st Jan 362.
188 21

from
* Sept '89

Wheel steering systems

Moody 31

Cobra 4 or 5R Cost £370.00 H1160010

Moody 346

Constellation 100 Cost £398.98 H1160020

Moody 376

Constellation 100 Cost £369.01 H1160030

Moody 422

Constellation 200 Cost £505.60 H1160050

Eclipse 33

Cobra 5R (inside steering) Cost £557.30 H1160090

The following windlasses are offered as options:

Yacht	Option/model	Manufacturer	Chain Size
Moody 31	-	-	-
Moody 336	*Royal	Lofrans	8mm
Moody 35	*Royal *Seawolf 520	Lofrans Simpson Lawrence	8m 5/16"
Moody 376	Royal *Seawolf 520	Lofrans Simpson Lawrence	8mm5/16"
Moody 38	Royal *Seawolf 520	Lofrans Simpson Lawrence	5/16"8mm
Moody 425	Royal *Seawolf 520	Lofrans Simpson Lawrence	10mm 9.5mm
Moody 44	Royal *Seawolf 520	Lofrans Simpson Lawrence	10mm9.5mm
Eclipse 33	Anchorman (gypsy only) *Power 700 (gypsy only -12V)	Simpson Lawrence Simpson Lawrence	5/16" 5/16"
Eclipse 38	Power 700 (gypsy only -12V)	Simpson Lawrence	9.5mm
Eclipse 43	Power 1000 (gypsy only -12V)	Simpson Lawrence	9.5mm

* Not fitted as standard - 'Seawolf' to be replaced March 1991.

Using the windlass

It is recommended that your anchor chain is suitably marked to indicate the amount of chain you have out while at anchor.

When lying at anchor in a heavy swell the chain will snatch either causing chain slip or excessive loads to be applied to the windlass. For safety it is recommended that a rope bridle be applied to transfer the load to a cleat.

Below decks

Upholstery

Your yacht has been upholstered with either the Christiana, Ravenna, Dash or Onyx range of materials. They all meet the Fire and Safety Regulation Act and have been tested to BS5852 PT1. For information on care of your upholstery refer to the maintenance section.

Port Lights

Moody 31

Vetus PT100

10" x 4"

Cost £23.00

D204764

Moody 34c

Kumar 8902

10" x 4"

Cost £20.44

D204752

Moody 37c

Kumar 8902

10" x 4"

Cost £20.44

D204752

Moody 422

Kumar 8912

12" x 5"

Cost £24.48

D204762

...
125
8940

Eclipse 33

Kumar 8902

10" x 4"

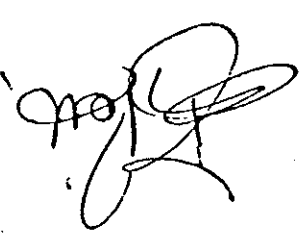
Cost £20.44

D204752

Subject: PROPPELLERS

Please let me have a current stock on hand listing of all propellers, showing against each type the boat type/engine type for which suited.

MOODY
SIGMA
ECLIPSE



P D G Burnham

ON ORDER	STOCK	DESCRIPTION
4	1	510435 16x14x2 LH Aqueduct
1	1	449520 15x13x3 RH CLEMENTS
3	11	510420 15x14 1/2 x2 RH V2003
8	8	643985 (PP3630) 16x9x2 RH PERKINS M30 (PP3630) 643985 641822
8	8	780 16x11x2 AQUADUCT
		PP 3025 1" SHANK 643533
		2003 17x12x2 RH
4	1	510429 780 16x11x2 RH AQUADUCT
1	1	510445 V2003T-16 1/2 x14 RH
		640758 P. M50 17x15x2 RH
		642330 OR-17x14x3 RH
10	10	510464 T110 17x11x2 RH
1	1	510461 OR 17x10x3 RH
		642330 PRIMA M50 17x14x3 RH
10	10	640758 M425 PRIMA M50 17x15x2 RH
10	10	510464 T110 17x11x2 RH
1	1	510461 OR 17x10x3 RH AQUADUCT
3	3	510479 ECLIPSE 23 - V2003 18x11x2 LH CHANGING TO 17x12x2 LH AQUADUCT
1	1	V2003T-18x11x2 LH CHANGING TO 17x12x2 LH
NIL	1	642138 ECLIPSE 38 - PRIMA M60 17x14x3 RH - CLEMENTS 642138
5	5	PARAMA M35 17x10x2 RH 643984
		PARAMA M30 16x9x2 RH 643985
		PARAMA M35 17x10x2 RH 643984
		PARAMA M30 16x9x2 RH 643985
10	10	ECLIPSE 43 - PRIMA M80T 18x12x3 RH AQUADUCT-640083
5	5	SIGMA 33 - V2002 15x11x2 LH FOLDING - 720012
6	12	SIGMA 35 - V2003 18x9x2 LH FOLDING - 720030
		SIGMA 38 - V2003 18x9x2 LH FOLDING - 720060
		V2003T 18x12x2 LH FOLDING - 720031
		MOODY 38 - PM50 17x15x2 RH - 1/2" SHANK - 640758
		PM 35 17x10x2 RH

2003T
17x14x3
18x10x3
510436
641558

MOODY 38 - PM50 17x15x2 RH - 1/2" SHANK - 640758
PM 35 17x10x2 RH

SAIL BOAT CLEARNS

M28	M31	M346	M376	M422	S33	S362	S38	Part No	Price
2	2	4	6	6	2	4		D204080	£6.56
2	2	-	-	-	2	-		D204060	£5.25
-	-	-	2	2	-	-		D204055	£5.25
2	2	2	-	-	-	-		D204020	£4.48
-	-	-	-	-	6	-		D204085	£1.05
-	-	-	-	-	-	2		D204086	£5.19

SAIL BOAT
CLEATS

M28	M31	M346	M376	M422	S33	S362	S38
10 x 4 Hole Cleats D204080							
8" x 4 Hole							
D204060							
10" x 4 Hole Cleats							
D204080							
8" x 4							
D204060							
D204080							
10" x 4 Hole Cleats							
D204080							
7" x 2 Hole Cleats							
D204020							
8" x 2 Hole							
D204055							
Plastic							
B1 Alloy							
D2040786							
Plastic							
2 of 6 1/2							
D2040786							
Plastic							

CLEATS
GENOA SHEET

CLEATS
MAINSHEET

CLEATS
SPRING MOORING

CLEATS
AFT MOORING

CLEATS
FWD MOORING

SAILBOAT

CLEATS

	M28	M31	M346	M376	M422	S33	S362	S38
FWD MOORING CLEATS		10	x	4	Hole Cleats	D204080		
AFT MOORING CLEATS	8" x 4 Hole D204060			10" x 4 Hole Cleats D204080		8" x 4 D204060	10" x 4 D204080	
SPRING MOORING CLEATS	-	-	-	10" x 4 Hole Cleats D204080		-	-	-
MAINSHEET CLEATS	-	-	-	7" x 2 Hole Cleats D204020		-	-	-
GENOA SHEET CLEATS				7" x 2 Hole Cleats D204020	8" x 2 Hole D204055	6 of 6½ Plastic D2040786	2 of 6½ Bl Alloy Plastimo	

Yacht	I (M)	J (M)	P (M)	E (M)
Moody 31	11.73	3.81	10.21	3.51
Moody 336	12.88	4.11	10.97	3.73
Moody 35	12.88	4.09	10.90	3.78
Moody 376	14.33	4.57	12.60	4.34
Moody 425	15.77	5.03	13.95	4.72
Eclipse 33	12.19	3.10	10.51	3.50
Eclipse 38	14.33	4.57	12.50	4.34
Eclipse 43	16.00	5.03	14.02	4.72

All yachts are supplied with Lucas sails which are manufactured from woven dacron. This material has good tensile strength, resists abrasion and is not unduly affected by moisture, however, it can be damaged by ultra-violet light and should not therefore be exposed unnecessarily to sunlight. If treated with care and maintained correctly these sails should give many seasons good service.

Sails

The running rigging comprises all the lines and relative mechanics used to hoist and control the sails, this includes halyards, sheets, guys, lifts, downhauls and outhauls together with their various shackles, blocks, cleats and winches. It is essential that they are inspected regularly for any signs of wear or stress. Information on types of cordage, wire ropes and fittings can be gained from a good chandler.

Running rigging

Steering systems

Single station steering systems

All steering systems fitted are manufactured by Whitlock Marine

Yacht	Model	Wheel Size
*Moody 31	Cobra 5R Delux	26"
Moody 336	Cobra 5R Delux	30"
Moody 35	Constellation 400	36"
Moody 376	Constellation 400	36"
Moody 38	Constellation 400	36"
Moody 425	Constellation 400	36"
Moody 425	Constellation 400	36"

* Tiller steering is standard on Moody 31, wheel steering fitted only as an option.

Emergency tiller

All yachts, less those fitted with two steering positions as standard, are supplied with an emergency tiller. This is fitted in a tiller socket located either within the yacht or externally under a blanking cover.

Cobra systems

The system is complete with friction brake and integral stainless steel output lever.
The system consists of:

Universal tiller lever, bored and keyed to suit the rudder stock.

Stainless steel draglink complete with rose joints and rudder stop ring, fitted beneath the pedestal.

Either Retrofit guard rail or a single lever engine control and guard rail (see illustrations on pages 3.5 and 3.6).

Moody 27
15x11x2
15x10x3

XM
277

STANDARD ITEMS ON MOODY AND SIGMA

ITEMS:	MOODY 28	MOODY 31	MOODY 34	MOODY 37
<u>FENDERS</u> <u>SIZE AND NUMBER</u>	2 18x5½ D204491 XM Yachting	2 18x5½ D204491 XM Yachting	3 18x5½ D204491 XM Yachting	3 22x7 D204480 XM Yachting
<u>ANCHOR WEIGHT</u> <u>AND TYPE</u>	25lb Plough D203511	25lb Plough D203511	35lb Plough D203520	35lb Plough D203520
<u>ANCHOR WINCH</u> <u>AND TYPE</u>	NONE	NONE	NONE	Lofrans Royal
<u>ANCHOR WARP WITH</u> <u>STD WINCH</u>	15FTM (28m) 5/16 Non Cali Chain D203930	15FTM (28m) of 5/16 Non Cali Chain D203930	15FTM (28m) of 5/16 Cali Chain D203930	15FTM (28m) of 5/16 Cali Chain D203930
<u>CALOR GAS BOTTLES</u> <u>(1 PER BOAT)</u> <u>EXPORT:</u>			1 10lb D203711	1 10lb D203711
<u>FRIDGE TYPE:</u>	NONE	NONE	NONE	160 Litre Danfos H205196
<u>MOORING WARP:</u>	2 15mx12mm D252001 XM Yachting	2 15mx12mm	2 15mx12mm	3 XM Yachting 15mx16mm D252010
<u>COOKERS:</u>	Atlantic Budget D203753	Atlantic Budget D203753	Atlantic Budget D203753	Atlantic de Luxe H203757
<u>PROPELLOR SIZES:</u>	15x11x2 blade LH D520427	16x14x2 blade LH D510435 Tein	15x12½x2 blade RH D510418 Tein	T90 engine 16x11 D510429 T108 engine 17x11 D510404
<u>ANTI FOULING:</u>	-	C.O.P.O.L.Y.M.E.R N A V Y B L U E		
<u>ECHO SOUNDER:</u>	Navico ES 120 D310100	Navico ES 120 D310100	Navico ES120 D310100	Navico ES120 D310100
<u>SUNLOG:</u>	NONE	NONE	12v x 12k Sunlog H512910 New 1	12v x 12k Sunlog H512910 New 1 326
<u>STERN LIGHTS:</u>	AQ 25 D3088143	AQ 25 D308843	AQ 25 D308843	AQ 40 D308773
<u>STD WINCHES:</u>	2 24C Lewmar	2 30C	2 40C	2 43C

VAUO 2003 TURBO 18x14 2 BLADE.

1st Jan 362.

188

31

from
* Sept 87

WASHBOARD LOCKS + KEYS

	Description	Marine Projects Reference	Regent Lock Reference
Moody 28	Straight 3/4" Barrel	D410415	P25L
Moody 31	Straight 1 1/4" Barrel	D410415	P251 1/4"
Moody 346	Cranked 3/4" Barrel	D410415	P25L
Moody 376	Straight 3/4" Barrel	D410415	P25L
Moody 422	Cranked 3/4" Barrel	D401415	P25L
Sigma 33	Cranked 3/4" Barrel	D410415	P25L
Sigma 362	Cranked 3/4" Barrel	D410415	P25L
Sigma 38			

ALL SPARE KEYS : D410417

Wheel steering systems

Moody 31

Cobra 4 or SR Cost £370.00 H1160010

Moody 346

Constellation 100 Cost £398.98 H1160020

Moody 376

Constellation 100 Cost £369.01 H1160030

Moody 422

Constellation 200 Cost £505.60 H1160050

Eclipse 33

Cobra SR (inside steering) Cost £557.30 H1160090