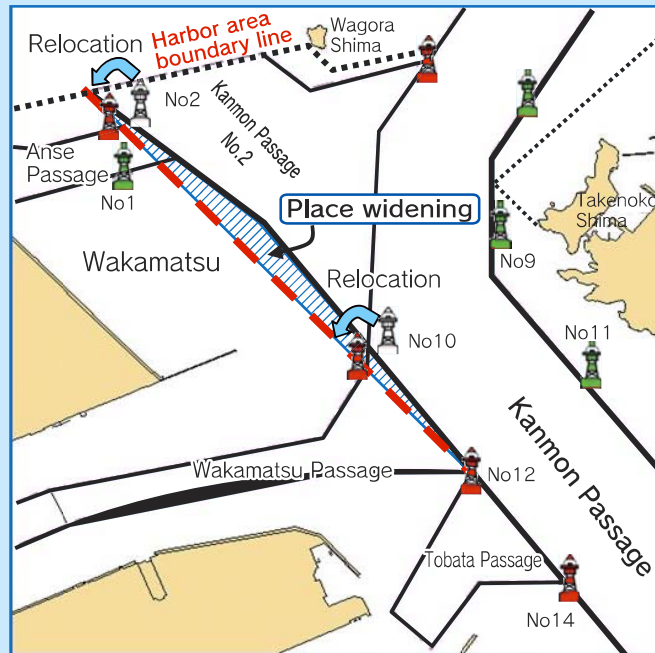


# Effective as of May, 2012, specified navigation rules will be changed in Kanmon Port!

## ~ Boundary Line of Kanmon Passage No. 2 ~

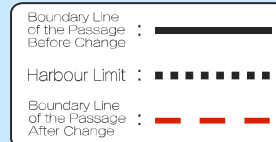
**[Effective as of March 29, 2012]**



### [Main Points of Change]

◆ **Passage Widened** (the blue-shaded section in the left chart): The sea area was widened from the No. 12 light buoy to a crossing line between the harbor limit and the west end of the present boundary line of Kanmon Passage No. 2 on the Kitakyushu City side.

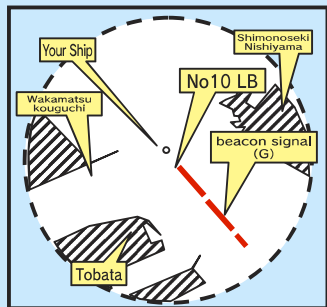
◆ **Relocation of Light Buoys**: Kanmon Passage No. 10 light buoy and No. 2 light buoy of Kanmon Passage No. 2 were relocated along the new boundary line.



## ~ Radar Beacon Signal of Kanmon Passage No. 10 Light Buoy ~

### [Main Points of Change]

Because of the relocation of Kanmon Passage No. 10 Light Buoy, the radar beacon signal of the Light Buoy will be changed from the beacon signal (---) to Morse code G (-.-.).



《Radar screen image》

## ~ Navigation Rules in Hayatomo-Seto ~

### **New Navigation Rules in Hayatomo-Seto** **(Effective as of May 1, 2012)**



Vessels navigating Hayatomo-Seto against the current shall maintain a speed of 4 knots or more greater than that of the current.

**[Revision:** Port Regulation Law: No.5 of Paragraph 1 Article 38]  
※ **Superior Speed:** Speed when Navigating against the Current

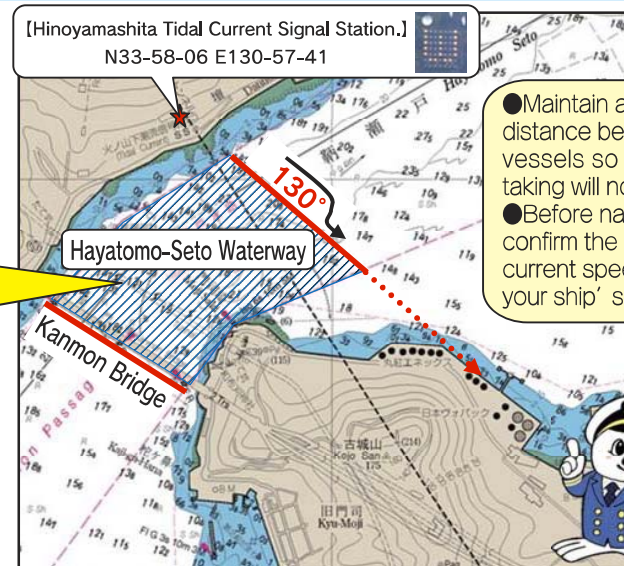


Vessels shall not overtake other vessels in Hayatomo-Seto Waterway.

**[Revision:** Port Regulation Law: Paragraph 2 Article 38]  
※ **Hayatomo-Seto Waterway:** Kanmon Passage between the west side line of Kanmon Bridge and the line of 130 degree from the Hinoyamashita Tidal Current Signal Station.



Vessels shall navigate on the right side of the passage as far as possible.  
**[Before Revision:** Port Regulation Law: No.1 of Paragraph 1 Article 38]



● Maintain a safe distance between the vessels so that overtaking will not occur.  
● Before navigating, confirm the tidal current speed and your ship's speed.



# For Safe navigation in or around Kanmon area

This map is only reference for navigation, and be sure to use the latest proper chart, such as W135 for navigation

2012

Captain of the Port, Kanmon

## Proper Operation of AIS

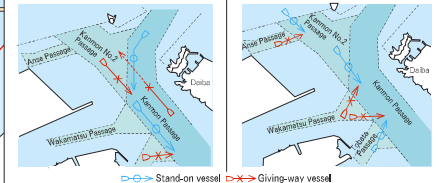
KEEP WATCH ON VHF CH16 (Only Japanese & English)

Emergency Number at Sea, Dial 「118」

- When navigating within port or around port boundaries, every vessel (except some exempt vessels) shall send AIS destination information.
- Within Kanmon Port, vessels (except some exempt vessels) are required to monitor transmissions from Kanmon Marine Traffic Advisory Service Center.

### Navigation Rules in Kanmon Port that require attention or to which attention should be given, (Extracts)

LEGEND	In case of meeting situation between a vessel proceeding Kanmon Passage and a vessel proceeding Kanmon No.2 Passage	In case of meeting situation between a vessel proceeding Kanmon No.2 Passage and a vessel coming out of Anse Passage.
	In case of meeting situation between a vessel proceeding Kanmon Passage and a vessel going out to Kanmon No.2 Passage from Kanmon Passage.	In case of meeting situation in Kanmon Passage between a vessel coming out of Tobata Passage and a vessel coming out of Wakamatsu Passage.



A vessel may overtake other vessel in the Kanmon Passage, consider surrounding situation and only when all conditions described below are met. (Except Hayatomo-Seto Waterway)

- When a vessel being overtaken does not need to take any cooperative movement in order for an overtaking vessel to pass safely.
- When an overtaking vessel can keep out of the way of any other vessels safely.

Examples	Variety	Meaning
	E or W	E : Eastward current W : Westward current
	0 ~ 13	Velocity of current (knot)
	↑ or ↓	↑ : getting faster, ↓ : getting slower

Meaning of an example  
The present current is 8 knots easterly and getting faster.

Tidal current information service Tel: 0832-22-8810  
Weather information service Tel: 093-921-6177



Notice: In blue-shaded section (east current) and red-shaded section (west current) in the strongest current area, eastbound vessels tend to drift to the center of the passage by the east and west currents.

**[Superior Speed over 4 knots]**  
Vessels navigating Hayatomo-Seto against the current shall maintain a speed of 4 knots or more greater than that of the current.

**[No overtaking]**  
Vessels shall not overtake other vessels in Hayatomo-Seto Waterway.

※Hayatomo-Seto Waterway: Kanmon Passage between the west side line of Kanmon Bridge and the line of 130 degree from the Hinoyamashita Tidal Current Signal Station.

### TRAFFIC CONTROL SIGNALS IN HAYATOMONOSETO WATERWAY

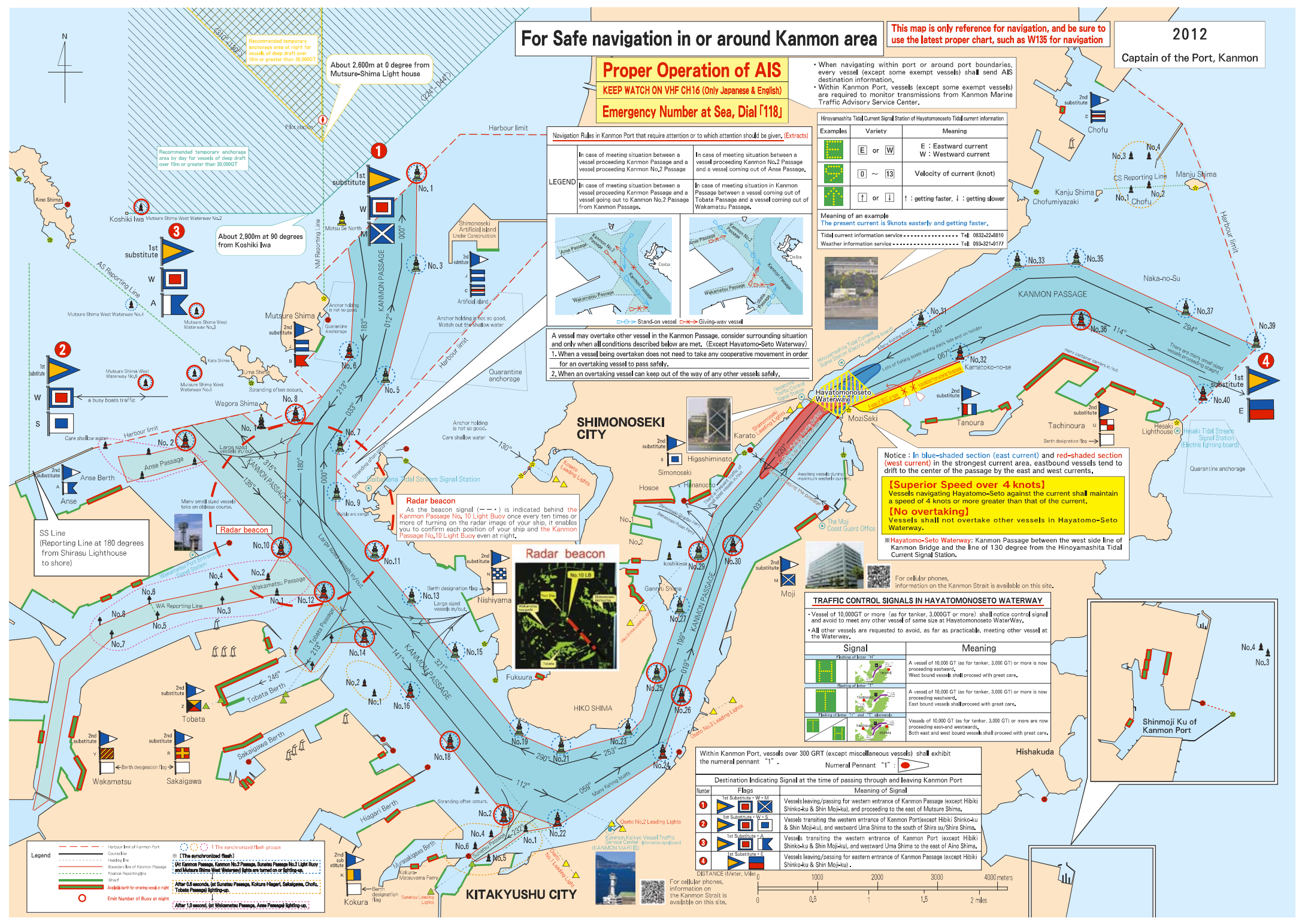
Signal	Meaning
	A vessel of 10,000 GT (as for tanker, 3,000 GT) or more is now proceeding eastward. West bound vessels shall proceed with great care.
	A vessel of 10,000 GT (as for tanker, 3,000 GT) or more is now proceeding westward. East bound vessels shall proceed with great care.
	Vessels of 10,000 GT (as for tanker, 3,000 GT) or more are now proceeding eastward and westward. Both east and west bound vessels shall proceed with great care.

Within Kanmon Port, vessels over 300 GRT (except miscellaneous vessels) shall exhibit the numeral pennant "1".

### Destination Indicating Signal at the time of passing through and leaving Kanmon Port

Number	Flags	Meaning of Signal
1		Vessels leaving/passing for western entrance of Kanmon Passage (except Hibiki Shinko-ku & Shin Moji-ku), and proceeding to the east of Mutsure Shima.
2		Vessels transiting the western entrance of Kanmon Port(except Hibiki Shinko-ku & Shin Moji-ku), and westward Uma Shime to the south of Shira su/Shira Shima.
3		Vessels transiting the western entrance of Kanmon Port (except Hibiki Shinko-ku & Shin Moji-ku), and westward Uma Shime to the east of Aino Shima.
4		Vessels leaving/passing for eastern entrance of Kanmon Passage (except Hibiki Shinko-ku & Shin Moji-ku).

For cellular phones, information on the Kanmon Strait is available on this site.

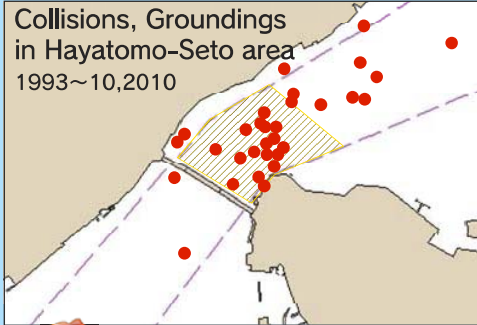


Legend	Meaning
	Harbour limit of Kanmon Port
	Course line
	Boundary line of Kanmon Passage
	Position Reporting line
	Asakishi berth for buoy vessel at night
	Emits Number of Buoy at night
	The synchronized flash groups
	(At Kanmon Passage, Kanmon No.2 Passage, Sunatsu Passage No.2 Light Buoy and Mutsure Shima West Waterway) lights are turned on or off together.
	After 0.5 seconds, (at Sunatsu Passage, Kokura Hiagar, Sakai-gawa, Chofu, Tobata Passage) lighting-up.
	After 1.0 second, (at Wakamatsu Passage, Anse Passage) lighting-up.



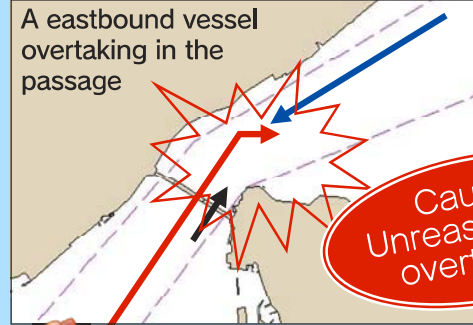
# For Safe Navigation

~ Hayatomo-Seto is **Dangerous** ! Leading Black Spot in Japan ! ~

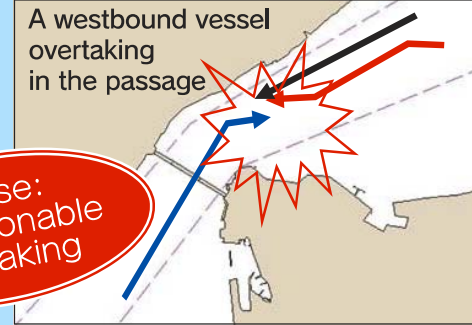


Collisions, Groundings  
in Hayatomo-Seto area  
1993~10,2010

Sites of accidents

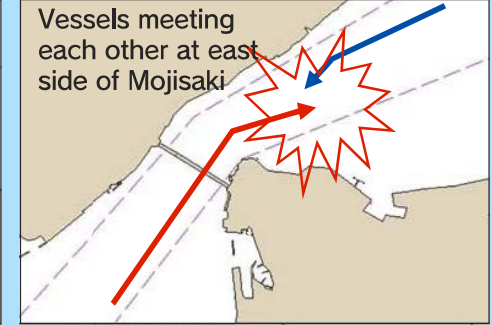


A eastbound vessel  
overtaking in the  
passage



A westbound vessel  
overtaking  
in the passage

Cause:  
Unreasonable  
overtaking



Vessels meeting  
each other at east  
side of Mojisaki

Typical examples of marine accidents around Hayatomo-Seto Waterway

## Main navigation rules in Hayatomo-Seto

Superior  
Speed  
over  
4 knots

Vessels navigating Hayatomo-Seto against the current shall maintain a speed of 4 knots or more greater than that of the current.

[Revision: Port Regulation Law: No.5 of Paragraph 1 Article 38 / Effective as of May 1, 2012]

※Superior speed: speed when navigating upstream to the current.

No  
Overtaking

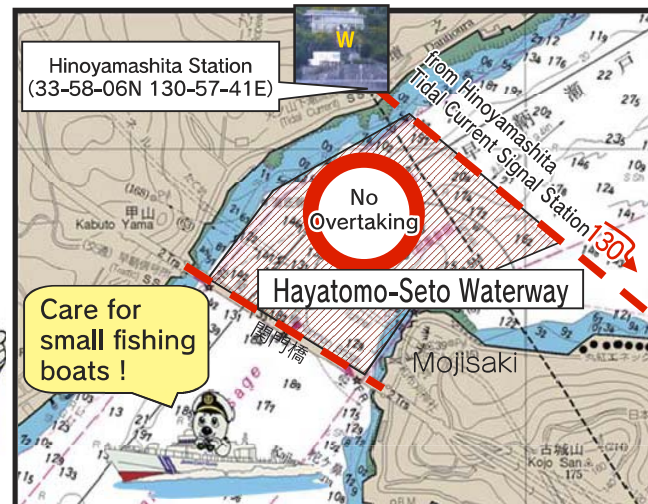
Vessels shall not overtake other vessels in Hayatomo-Seto Waterway.

[Revision: Port Regulation Law :Paragraph 2 Article 38 / Effective as of May 1, 2012]

Keep  
Right

Vessels shall navigate on the right side of the passage as far as possible.

[Revision: Port Regulation Law: No.1 of Paragraph 1 Article 38]



※Hayatomo-Seto Waterway: Kanmon Passage between the west side line of Kanmon Bridge and the line of 130 degree from the Hinoyamashita Tidal Current Signal Station.

Vessels unable to maintain a superior speed more than 4 knots may be required to wait outside of the passage.

Taking your vessel's speed into consideration, pass through as quickly as possible.



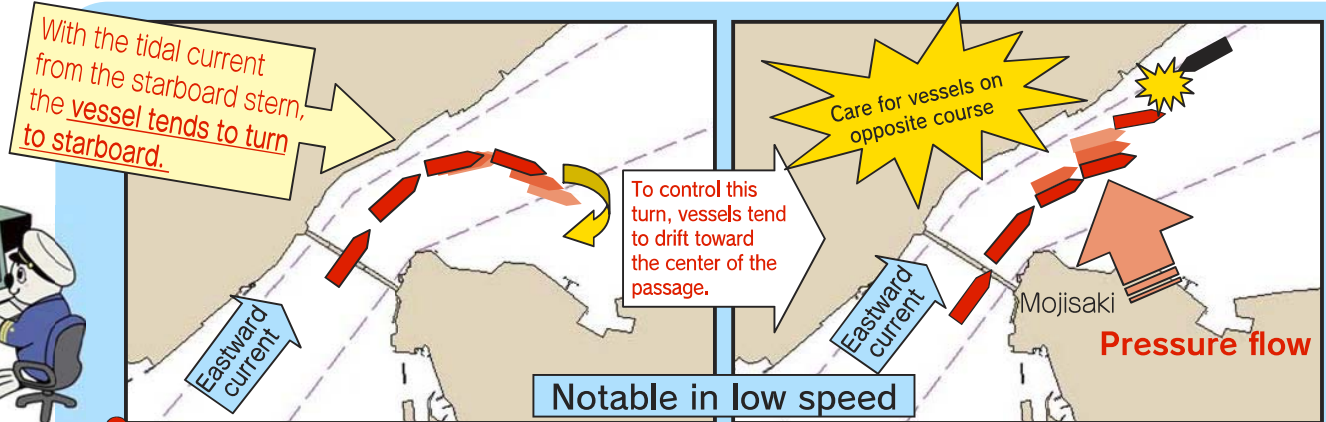
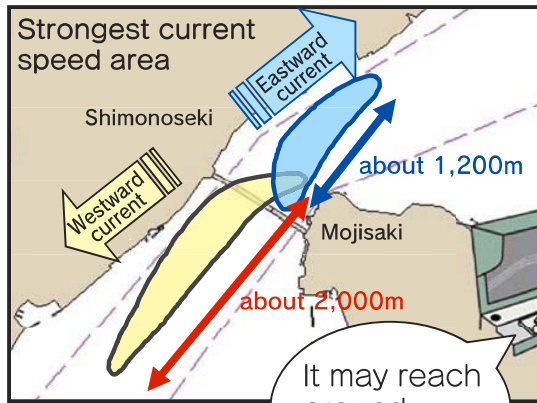
## ⚠️ [Caution when passing through the Hayatomo-Seto]

For safe navigation...

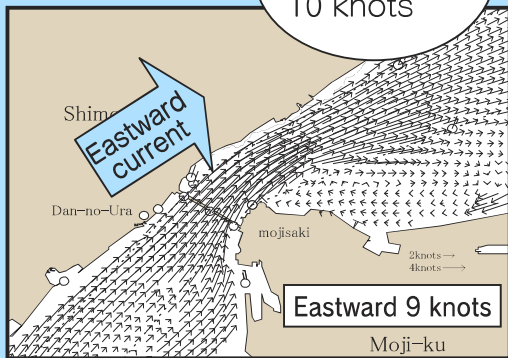
- By maintaining a speed of 4 knots or more greater than that of the current in either a fair and or an adverse current, it is possible to navigate a vessel in a safer manner. Before navigating, confirm the tidal current information. (Radio broadcasting : 2,019kHz)
- Maintain a safe distance ahead of your vessel, no overtaking in this waterway.



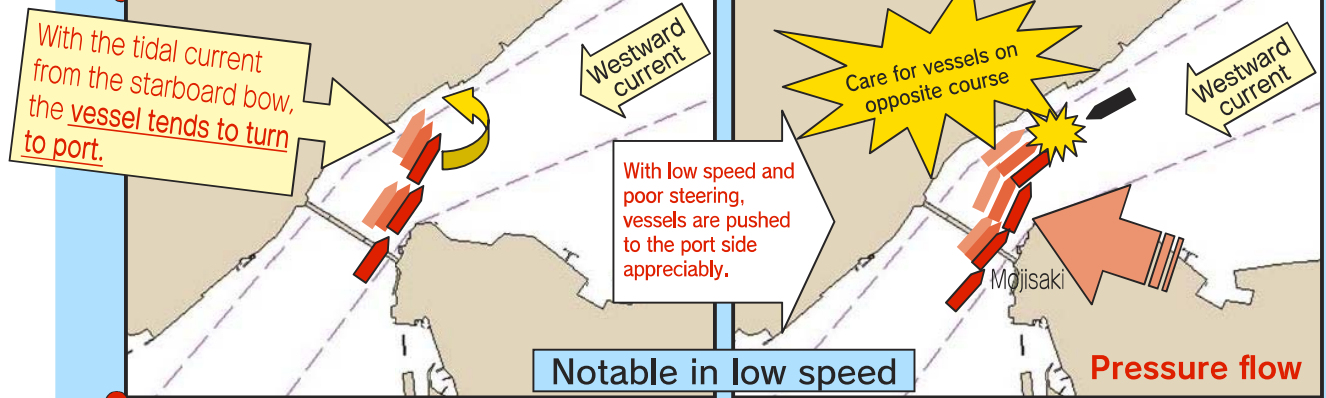
# Hayatomo-Seto-Tidal Conditions and Traits



**ATTENTION** With low speed, vessels are pushed to a center of the passage at the east side of Mojisaki.



An example of a tidal current chart in Hayatomo-Seto



**ATTENTION** With low speed, vessels are pushed to the center of the passage off Mojisaki.

Tide tables are only predictive values.  
As the real tidal current is sometimes much stronger, sufficient caution should be exercised.

※ Low speed means the vessel's speed is less than the speed of 4 knots added to the current speed.



Contact : Navigation Safety Division, 7th Regional Coast Guard Headquarters  
〒801-8507 1-3-10 Nishi-Kaigan, Moji-Ku, Kitakyushu  
Phone:(093) 321-2931 FAX(093) 322-1211 <http://www.kaiho.mlit.go.jp/07kanku/>